

Architectural Precast Concrete Color and Texture Selection Guide

Second Edition



General Information

The proper selection of color, form, and texture is critical to the aesthetic appearance of architectural precast concrete. The choice of appropriate aggregates and textures, combined with well conceived production and erection details, can achieve a wide variety of design objectives.

It is recommended that the architect contact local architectural precast concrete producers in the early design stages and throughout the development of the contract documents. This will provide optimum utility and quality of the product and its installation at minimum construction cost. Precast concrete manufactured in a plant under factory-controlled conditions, ensures a uniform, high quality building facade in the desired shapes, colors and textures.

The photographs are numbered and arranged from light to dark colors. Most of the samples have dual finishes and each finish is numbered separately.

Color

Design flexibility is possible in both color and texture of precast concrete by varying aggregate and matrix color, size of aggregates, finishing processes, and depth of exposure. Combining color with texture accentuates the natural beauty of aggregates.

Color and, consequently, color tone represent relative values. They are not absolute and constant, but are affected by light, shadow, density, time and other surrounding or nearby colors.

Color selection should be made under lighting conditions similar to those under which the precast concrete will be used, such as the strong light and shadows of natural daylight. Surface texture influences color. The building's appearance is a function of the architect's use of light, shadow, texture and color.

Cement

Cement (plus coloring agent) exerts the primary color influence on a smooth finish because it coats the exposed concrete surface. As the concrete surface is progressively removed and aggregates are exposed, the panel color increasingly exhibits the fine and then the coarse aggregate colors. Nevertheless, the color of the cement always has an effect on the general tone of the panel. Cement may be gray, White, buff or a mixture. All cements have inherent color and shading differences depending on their source.

Pigment

Pigments and pigmented admixtures often are added to the matrix to obtain colors which cannot be obtained through combinations of cement and fine aggregate alone. White portland cement will produce cleaner, brighter colors and should be used in preference.

Fine Aggregate

Fine aggregates have a major effect on the color of White and light buff colored concrete, and can add color tones when the surface is given a shallow profile to increase their exposure.

Coarse Aggregate

Coarse aggregate colors become dominant as the surface of the concrete is removed to obtain a medium or deep aggregate exposure profile. Some finishing processes change the appearance of aggregates. Sandblasting will give the aggregate a matte finish, while acid etching may increase their brightness. Exposure by retardation normally leaves the aggregates unchanged.

Disclaimer

Any attempt to categorize and define architectural precast concrete with its myriad expressions and possibilities can have only limited success. Precast concrete is a visually rich material that offers the architect the opportunity to be innovative and obtain design objectives that cannot be accomplished with other materials.

The samples in this search serve only as a visual guide for initial selection of color and texture. It is important to note that the colors seen will vary depending on your monitor settings, as well as by the specific settings for your color printer, should you print the results of your search. Since it is impossible to reproduce exactly on the screen the true colors of precast mix designs (as it is with printing inks), some variation from these samples must be expected.

Additionally, due to different material sources or different techniques in various plants, the architect should not expect to select a photographic sample and obtain exact matching by all precast concrete producers. Samples should be required to ensure that the desired colors and textures can be satisfactorily matched.

Be sure to contact the PCI-certified architectural precaster near you to ask about the colors and textures available in the architectural precast concrete design option! And bear in mind that many architectural precasters ship over wide, multistate areas.



100

Color: White

Concrete Color: White

Texture: Retarded

Exposure: Light

Description: Fine Aggregate: crushed White quartz;
Coarse Aggregate: 3/8 to 1/8 in. White quartz



101

Color: White

Concrete Color: White

Texture: Sandblasted

Exposure: Light

Description: Fine Aggregate: crushed White quartz;
Coarse Aggregate: 3/8 to 1/8 in. White quartz



102

Color: Green

Concrete Color: White

Texture: Retarded

Exposure: Medium

Description: Fine Aggregate: White masonry sand;
Coarse Aggregate: light green marble; Pigment: green



103

Color: Grey

Concrete Color: White

Texture: Sandblasted

Exposure: Medium

Description: Fine Aggregate: White masonry sand;
Coarse Aggregate: light green marble; Pigment: green



104

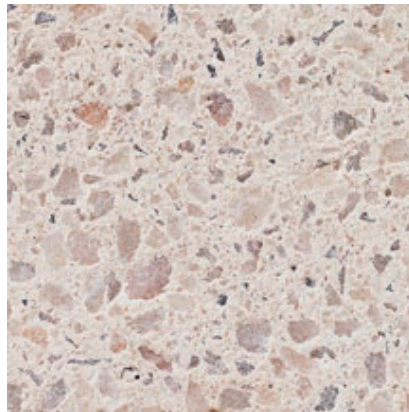
Color: White

Concrete Color: White

Texture: Retarded

Exposure: Medium

Description: Fine Aggregate: crushed White quartz;
Coarse Aggregate: 9/16 to 3/16 in. White quartz;
Pigment: White



105

Color: White

Concrete Color: White

Texture: Sandblasted

Exposure: Medium

Description: Fine Aggregate: crushed White quartz;
Coarse Aggregate: 9/16 to 3/16 in. White quartz;
Pigment: White



106

Color: White

Concrete Color: White

Texture: Retarded

Exposure: Medium

Description: Fine Aggregate: crushed White marble;
Coarse Aggregate: 5/8 to 9/32 in. White quartz



107

Color: White

Concrete Color: White

Texture: Sandblasted

Exposure: Medium

Description: Fine Aggregate: crushed White marble;
Coarse Aggregate: 5/8 to 9/32 in. White quartz



108

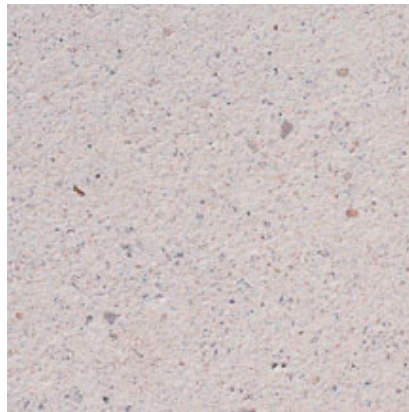
Color: White

Concrete Color: White

Texture: Sandblasted

Exposure: Deep

Description: Fine Aggregate: crushed buff limestone;
Coarse Aggregate: 1/2 to 1/4 in. buff limestone



109

Color: White

Concrete Color: White

Texture: Sandblasted

Exposure: Medium

Description: Fine Aggregate: crushed buff limestone;
Coarse Aggregate: 1/2 to 1/4 in. buff limestone



110

Color: Buff/Tan

Concrete Color: White

Texture: Sandblasted

Exposure: Deep

Description: Fine Aggregate: crushed buff limestone;
Coarse Aggregate: 1/2 to 1/4 in. buff limestone; Pigment:
buff



111

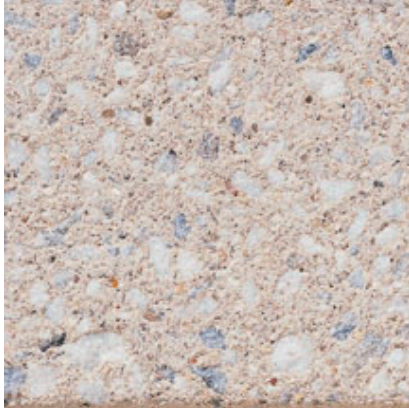
Color: Buff/Tan

Concrete Color: White

Texture: Sandblasted

Exposure: Light

Description: Fine Aggregate: crushed buff limestone;
Coarse Aggregate: 1/2 to 1/4 in. buff limestone; Pigment:
buff



112

Color: Buff/Tan

Concrete Color: White

Texture: Sandblasted

Exposure: Medium

Description: Fine Aggregate: buff concrete sand;
Coarse Aggregate: 1/2 to 1/4 in. brown limestone;
Pigment: buff



113

Color: Buff/Tan

Concrete Color: White

Texture: Sandblasted

Exposure: Light

Description: Fine Aggregate: buff concrete sand;
Coarse Aggregate: 1/2 to 1/4 in. brown limestone;
Pigment: buff



114

Color: White

Concrete Color: White

Texture: Retarded

Exposure: Medium

Description: Fine Aggregate: crushed White marble;
Coarse Aggregate: 1/2 to 3/8 in. White marble



115

Color: White

Concrete Color: White

Texture: Sandblasted

Exposure: Medium

Description: Fine Aggregate: crushed White marble;
Coarse Aggregate: 1/2 to 3/8 in. White marble



116

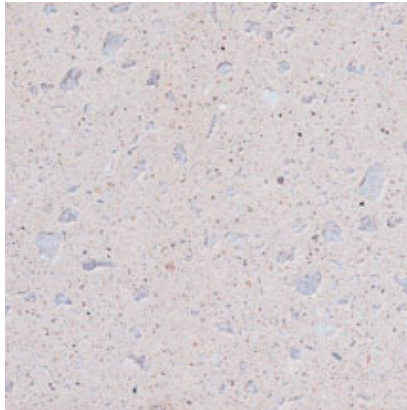
Color: Buff/Tan

Concrete Color: White

Texture: Retarded

Exposure: Medium

Description: Fine Aggregate: White concrete sand;
Coarse Aggregate: 1/2 to 1/4 in. gray limestone;
Pigment: dark buff and dark gray



117

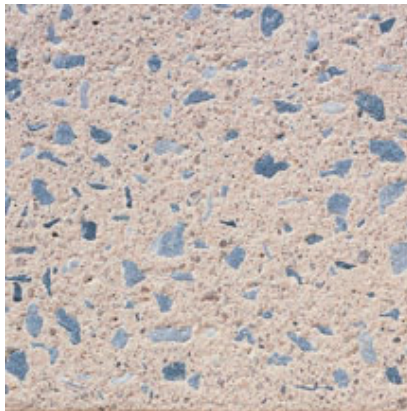
Color: White

Concrete Color: White

Texture: Sandblasted

Exposure: Light

Description: Fine Aggregate: White concrete sand;
Coarse Aggregate: 1/2 to 1/4 in. gray limestone;
Pigment: dark buff and dark gray



118

Color: Buff/Tan

Concrete Color: White

Texture: Sandblasted

Exposure: Medium

Description: Fine Aggregate: White silica sand; Coarse
Aggregate: 1/2 to 1/4 gray limestone; Pigment: buff



119

Color: Buff/Tan

Concrete Color: White

Texture: Sandblasted

Exposure: Light

Description: Fine Aggregate: White silica sand; Coarse
Aggregate: 1/2 to 1/4 gray limestone; Pigment: buff



120

Color: White

Concrete Color: White

Texture: Retarded

Exposure: Deep

Description: Fine Aggregate: crushed White quartz;
Coarse Aggregate: 7/8 to 5/8 in. White quartz



121

Color: White

Concrete Color: White

Texture: Sandblasted

Exposure: Deep

Description: Fine Aggregate: crushed White quartz;
Coarse Aggregate: 7/8 to 5/8 in. White quartz



122

Color: Buff/Tan

Concrete Color: White

Texture: Acid Etched

Exposure: Light

Description: Fine Aggregate: crushed White limestone;
Coarse Aggregate: 3/8 to 1/8 in. White limestone;
Pigment: ocher and black



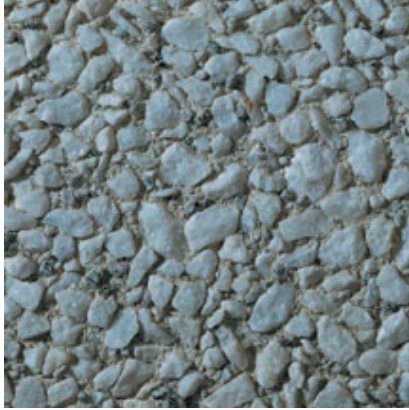
123

Color: Buff/Tan

Concrete Color: White

Finish: Honed

Description: Fine Aggregate: crushed White limestone;
Coarse Aggregate: 3/8 to 1/8 in. White limestone;
Pigment: ocher and black



124

Color: White

Concrete Color: White

Texture: Retarded

Exposure: Medium

Description: Fine Aggregate: crushed gray granite;
Coarse Aggregate: 5/8 to 9/32 in. White marble



125

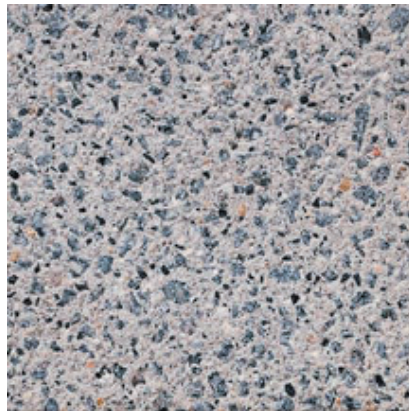
Color: Grey

Concrete Color: White

Texture: Sandblasted

Exposure: Light

Description: Fine Aggregate: crushed gray granite;
Coarse Aggregate: 5/8 to 9/32 in. White marble



126

Color: Grey

Concrete Color: White

Texture: Sandblasted

Exposure: Medium

Description: Fine Aggregate: 90% - White river sand,
10% - crushed black granite; Coarse Aggregate: 1/2 to
1/4 in. black granite



127

Color: Buff/Tan

Concrete Color: White

Texture: Acid Etched

Exposure: Light

Description: Fine Aggregate: 90% - White river sand,
10% - crushed black granite; Coarse Aggregate: 1/2 to
1/4 in. black granite



128

Color: White

Concrete Color: White

Texture: Retarded

Exposure: Medium

Description: Fine Aggregate: crushed White quartz;
Coarse Aggregate: 1/2 to 1/4 in. White quartzite



129

Color: White

Concrete Color: White

Texture: Sandblasted

Exposure: Medium

Description: Fine Aggregate: crushed White quartz;
Coarse Aggregate: 1/2 to 1/4 in. White quartzite



130

Color: Buff/Tan

Concrete Color: White

Texture: Sandblasted

Exposure: Deep

Description: Fine Aggregate: crushed White limestone;
Coarse Aggregate: 1/2 to 1/4 in. White limestone



131

Color: Buff/Tan

Concrete Color: White

Texture: Sandblasted

Exposure: Medium

Description: Fine Aggregate: crushed White limestone;
Coarse Aggregate: 1/2 to 1/4 in. White limestone



132

Color: Buff/Tan

Concrete Color: antique White

Texture: Sandblasted

Exposure: Medium

Description: Fine Aggregate: crushed buff limestone,
Coarse: 1/2 to 1/4 in. buff limestone



133

Color: Buff/Tan

Concrete Color: antique White

Texture: Retarded

Exposure: Light

Description: Fine Aggregate: crushed buff limestone,
Coarse: 1/2 to 1/4 in. buff limestone



134

Color: Buff/Tan

Concrete Color: White

Texture: Retarded

Exposure: Medium

Description: Fine Aggregate: buff masonry sand,
Coarse Aggregate: 3/8 to 1/8 in. buff limestone



135

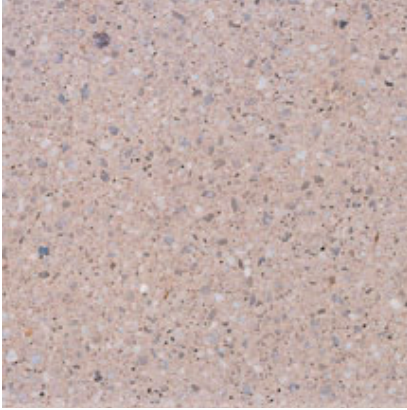
Color: Buff/Tan

Concrete Color: White

Texture: Acid Etched

Exposure: Light

Description: Fine Aggregate: buff masonry sand,
Coarse Aggregate: 3/8 to 1/8 in. buff limestone



136

Color: Buff/Tan

Concrete Color: White

Texture: Acid Etched

Exposure: Light

Description: Fine Aggregate: crushed White limestone;
Coarse Aggregate: 3/8 to 1/8 in. White limestone;
Pigment: yellow, brown and black



137

Color: Buff/Tan

Concrete Color: White

Finish: Honed

Description: Fine Aggregate: crushed White limestone;
Coarse Aggregate: 3/8 to 1/8 in. White limestone;
Pigment: yellow, brown and black



138

Color: Grey

Concrete Color: White

Texture: Retarded

Exposure: Light

Description: Fine Aggregate: crushed rose quartz;
Coarse Aggregate: 9/32 to 1/8 in. rose quartz



139

Color: Grey

Concrete Color: White

Texture: Acid Etched

Exposure: Light

Description: Fine Aggregate: crushed rose quartz;
Coarse Aggregate: 9/32 to 1/8 in. rose quartz



140

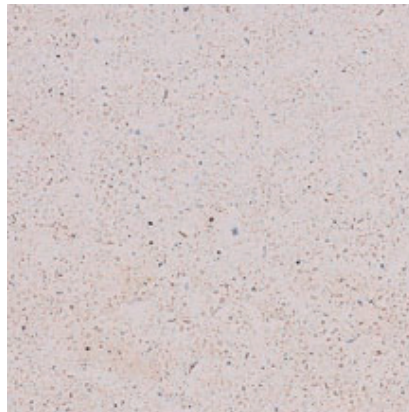
Color: Buff/Tan

Concrete Color: White

Texture: Retarded

Exposure: Deep

Description: Fine Aggregate: crushed White marble;
Coarse Aggregate: 1/2 to 1/4 in. White/buff marble



141

Color: White

Concrete Color: White

Texture: Acid Etched

Exposure: Light

Description: Fine Aggregate: crushed White marble;
Coarse Aggregate: 1/2 to 1/4 in. White/buff marble



142

Color: Buff/Tan

Concrete Color: White

Texture: Retarded

Exposure: Medium

Description: Fine Aggregate: White concrete sand,
Coarse Aggregate: 1/2 to 1/4 in. White limestone



143

Color: White

Concrete Color: White

Texture: Sandblasted

Exposure: Medium

Description: Fine Aggregate: White concrete sand,
Coarse Aggregate: 1/2 to 1/4 in. White limestone



144

Color: White

Concrete Color: White

Texture: Retarded

Exposure: Medium

Description: Fine Aggregate: crushed White quartz;
Coarse Aggregate: 80% - 3/8 to 1/8 White quartz, 10%
- 3/8 to 1/8 in. black granite, 10% - black slag



145

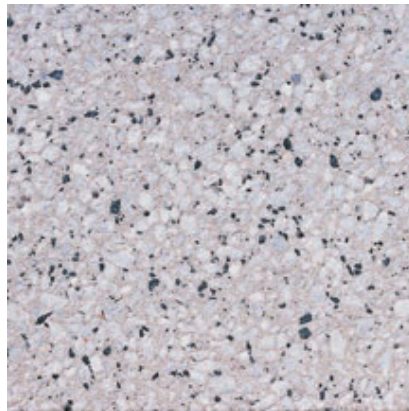
Color: White

Concrete Color: White

Texture: Sandblasted

Exposure: Light

Description: Fine Aggregate: crushed White quartz;
Coarse Aggregate: 80% - 3/8 to 1/8 White quartz, 10%
- 3/8 to 1/8 in. black granite, 10% - black slag



146

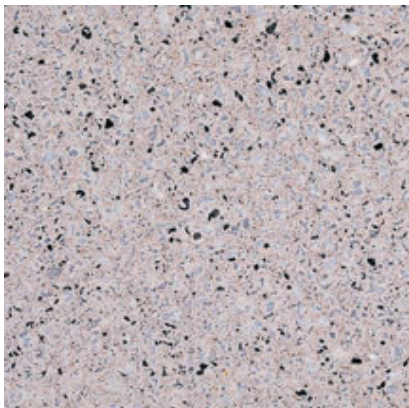
Color: White

Concrete Color: White

Texture: Sandblasted

Exposure: Medium

Description: Fine Aggregate: White concrete sand/
black granite grit, Coarse Aggregate: 3/8 to 1/8 in. White
marble



147

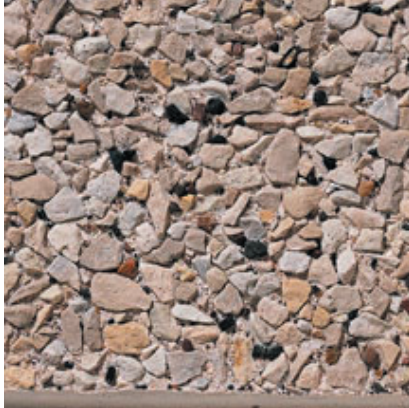
Color: Buff/Tan

Concrete Color: White

Texture: Acid Etched

Exposure: Medium

Description: Fine Aggregate: White concrete sand/
black granite grit, Coarse Aggregate: 3/8 to 1/8 in. White
marble



148

Color: Buff/Tan

Concrete Color: White

Texture: Retarded

Exposure: Deep

Description: Fine Aggregate: crushed buff limestone, Coarse Aggregate: 1/2 to 1/4 in. White limestone



149

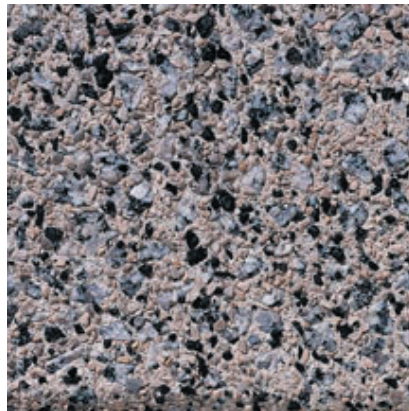
Color: Buff/Tan

Concrete Color: White

Texture: Sandblasted

Exposure: Medium

Description: Fine Aggregate: crushed buff limestone, Coarse Aggregate: 1/2 to 1/4 in. White limestone



150

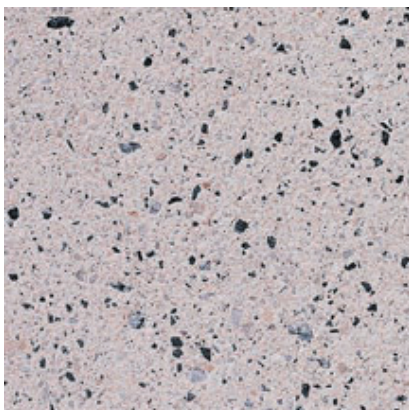
Color: Black - Buff/Tan

Concrete Color: White

Texture: Retarded

Exposure: Medium

Description: Fine Aggregate: 80% - crushed buff limestone, 20% - black granite grit, Coarse Aggregate: 1/2 to 1/4 in. salt and pepper granite



151

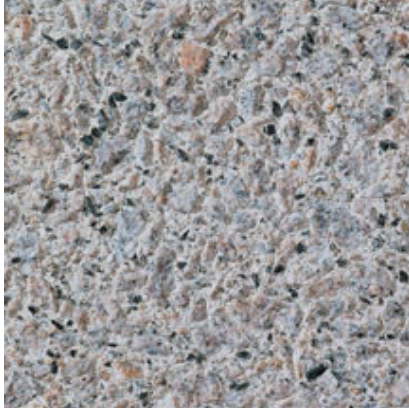
Color: Black - Buff/Tan

Concrete Color: White

Texture: Sandblasted

Exposure: Light

Description: Fine Aggregate: 80% - crushed buff limestone, 20% - black granite grit, Coarse Aggregate: 1/2 to 1/4 in. salt and pepper granite



152

Color: Grey

Concrete Color: White

Texture: Retarded

Exposure: Medium

Description: Fine Aggregate: 75% - crushed gray granite, 25% - crushed black granite grit; Coarse Aggregate: 5/8 to 9/32 in. gray granite; Pigment: black



153

Color: Grey

Concrete Color: White

Texture: Sandblasted

Exposure: Light

Description: Fine Aggregate: 75% - crushed gray granite, 25% - crushed black granite grit; Coarse Aggregate: 5/8 to 9/32 in. gray granite; Pigment: black



154

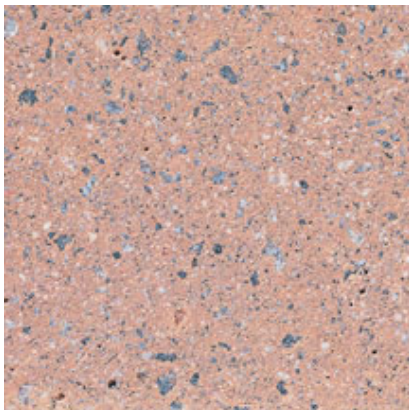
Color: Black - Buff/Tan

Concrete Color: White

Texture: Retarded

Exposure: Medium

Description: Fine Aggregate: crushed gray granite; Coarse Aggregate: 9/16 to 3/16 gray granite; Pigment: rose



155

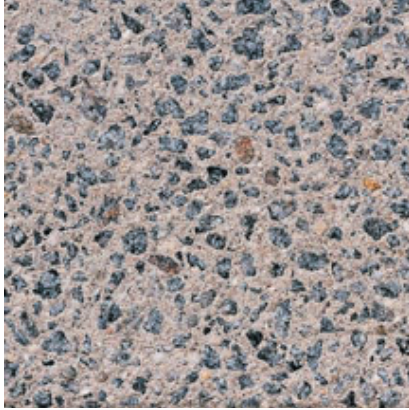
Color: Buff/Tan

Concrete Color: White

Texture: Sandblasted

Exposure: Medium

Description: Fine Aggregate: crushed gray granite; Coarse Aggregate: 9/16 to 3/16 gray granite; Pigment: rose



156

Color: Black - Buff/Tan

Concrete Color: White

Texture: Sandblasted

Exposure: Medium

Description: Fine Aggregate: off-White river sand, Coarse Aggregate: 1/2 to 1/4 in. black granite, Pigment: dark buff



157

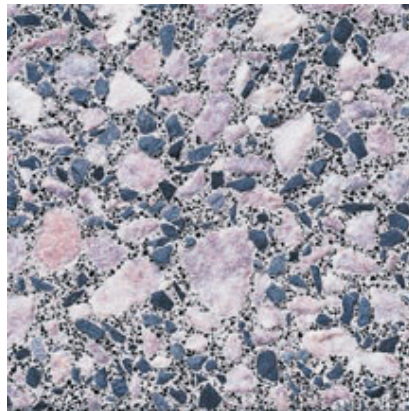
Color: Buff/Tan

Concrete Color: White

Texture: Acid Etched

Exposure: Light

Description: Fine Aggregate: off-White river sand, Coarse Aggregate: 1/2 to 1/4 in. black granite, Pigment: dark buff



158

Color: Pink - Black

Concrete Color: White

Texture: Sandblasted

Exposure: Deep

Description: Fine Aggregate: 1/3 - White silica sand, 2/3 - black granite grit; Coarse Aggregate: 85% - 3/4 to 3/8 in. pink marble, 15% - 3/8 to 1/8 in. black granite



159

Color: Black - White

Concrete Color: White

Texture: Sandblasted

Exposure: Light

Description: Fine Aggregate: 1/3 - White silica sand, 2/3 - black granite grit; Coarse Aggregate: 85% - 3/4 to 3/8 in. pink marble, 15% - 3/8 to 1/8 in. black granite



160

Color: White

Concrete Color: White

Texture: Retarded

Exposure: Medium

Description: Fine Aggregate: crushed gray granite,
Coarse Aggregate: 1/2 to 3/8 in. White marble



161

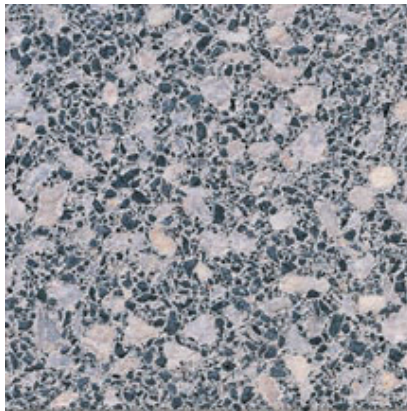
Color: White

Concrete Color: White

Texture: Sandblasted

Exposure: Medium

Description: Fine Aggregate: crushed gray granite,
Coarse Aggregate: 1/2 to 3/8 in. White marble



162

Color: Black

Concrete Color: White

Texture: Sandblasted

Exposure: Medium

Description: Fine Aggregate: 95% - crushed black
granite sand, 5% - White silica sand; Coarse Aggregate:
5/8 to 1/4 in. White limestone



163

Color: Grey

Concrete Color: White

Texture: Sandblasted

Exposure: Light

Description: Fine Aggregate: 95% - crushed black
granite sand, 5% - White silica sand; Coarse Aggregate:
5/8 to 1/4 in. White limestone



164

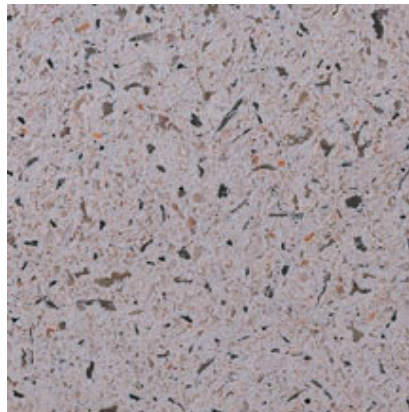
Color: Pink

Concrete Color: White

Texture: Retarded

Exposure: Medium

Description: Fine Aggregate: crushed rose quartz;
Coarse Aggregate: 5/8 to 9/32 in. rose quartz



165

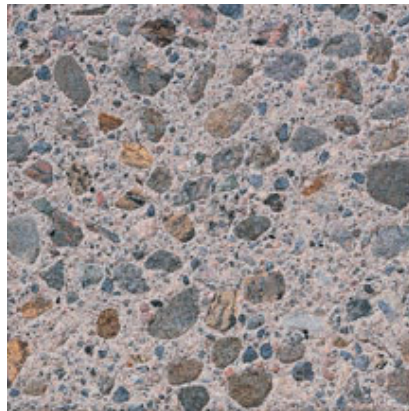
Color: Pink

Concrete Color: White

Texture: Acid Etched

Exposure: Medium

Description: Fine Aggregate: crushed rose quartz;
Coarse Aggregate: 5/8 to 9/32 in. rose quartz



166

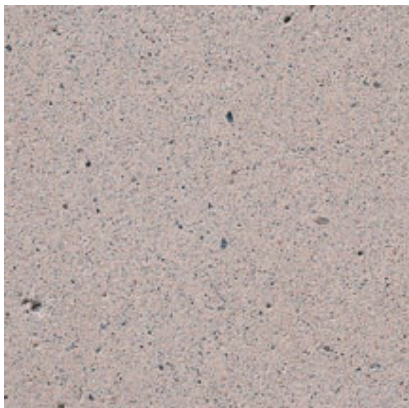
Color: Buff/Tan

Concrete Color: 85% - White; 15% - Gray

Texture: Sandblasted

Exposure: Medium

Description: Fine Aggregate: crushed brown granite;
Coarse Aggregate: 5/8 to 3/8 in. multicolored, river gravel; Pigment: reddish brown



167

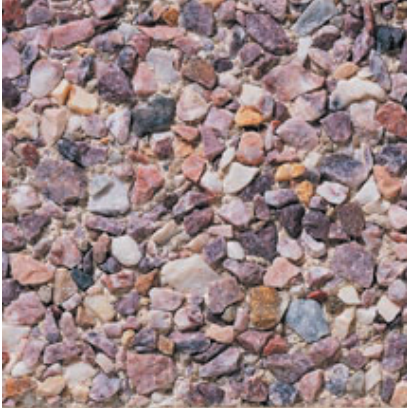
Color: Buff/Tan

Concrete Color: 85% - White; 15% - Gray

Texture: Sandblasted

Exposure: Light

Description: Fine Aggregate: crushed brown granite;
Coarse Aggregate: 5/8 to 3/8 in. multicolored, river gravel; Pigment: reddish brown



168

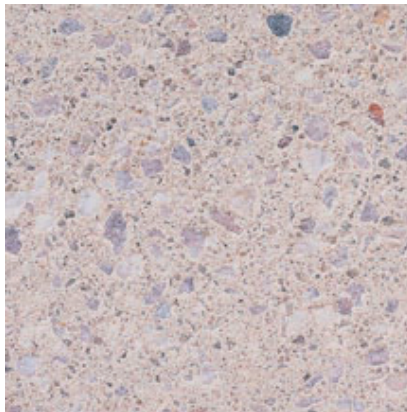
Color: Pink

Concrete Color: White

Texture: Retarded

Exposure: Medium

Description: Fine Aggregate: crushed gray quartz,
Coarse Aggregate: 1/2 to 1/4 in. pink marble



169

Color: Pink

Concrete Color: White

Texture: Sandblasted

Exposure: Medium

Description: Fine Aggregate: crushed gray quartz,
Coarse Aggregate: 1/2 to 1/4 in. pink marble



170

Color: White

Concrete Color: White

Texture: Retarded

Exposure: Light

Description: Fine Aggregate: crushed White quartz;
Coarse Aggregate: 5/16 to 1/8 in. White quartz



171

Color: White

Concrete Color: White

Texture: Sandblasted

Exposure: Light

Description: Fine Aggregate: crushed White quartz;
Coarse Aggregate: 5/16 to 1/8 in. White quartz



172

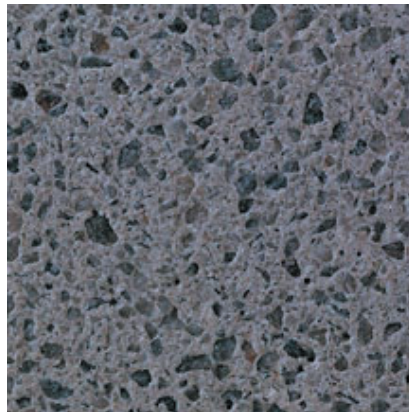
Color: Grey

Concrete Color: White

Texture: Retarded

Exposure: Medium

Description: Fine Aggregate: crushed gray quartz;
Coarse Aggregate: 3/8 to 1/8 in. gray quartz



173

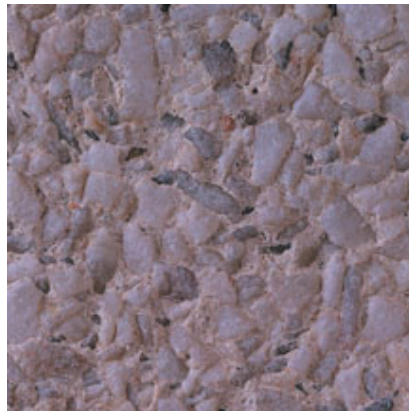
Color: Grey

Concrete Color: White

Texture: Sandblasted

Exposure: Medium

Description: Fine Aggregate: crushed gray quartz;
Coarse Aggregate: 3/8 to 1/8 in. gray quartz



174

Color: Pink

Concrete Color: White

Texture: Retarded

Exposure: Medium

Description: Fine Aggregate: crushed White quartz,
Coarse Aggregate: 1/2 to 1/4 in. White quartz



175

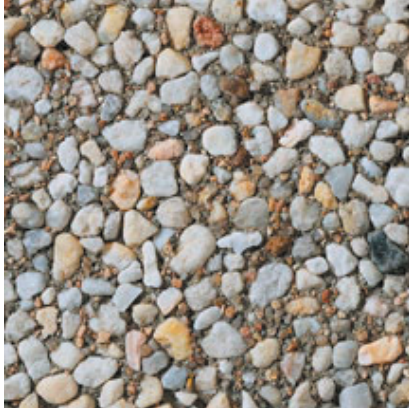
Color: Pink

Concrete Color: White

Texture: Sandblasted

Exposure: Deep

Description: Fine Aggregate: crushed White quartz,
Coarse Aggregate: 1/2 to 1/4 in. White quartz



176

Color: White

Concrete Color: Gray

Texture: Retarded

Exposure: Deep

Description: Fine Aggregate: brown river sand; Coarse Aggregate: 3/4 to 1/2 in. White river gravel; Pigment: brown



177

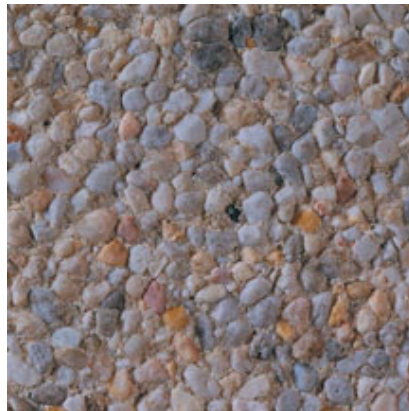
Color: Grey

Concrete Color: Gray

Texture: Sandblasted

Exposure: Deep

Description: Fine Aggregate: brown river sand; Coarse Aggregate: 3/4 to 1/2 in. White river gravel; Pigment: brown



178

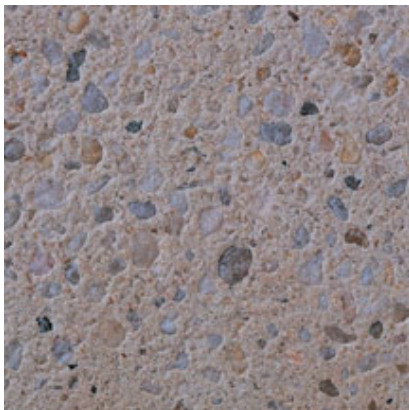
Color: White

Concrete Color: White

Texture: Retarded

Exposure: Medium

Description: Fine Aggregate: White river sand; Coarse Aggregate: 1/2 to 3/8 in. White river gravel



179

Color: White

Concrete Color: White

Texture: Sandblasted

Exposure: Medium

Description: Fine Aggregate: White river sand; Coarse Aggregate: 1/2 to 3/8 in. White river gravel



180

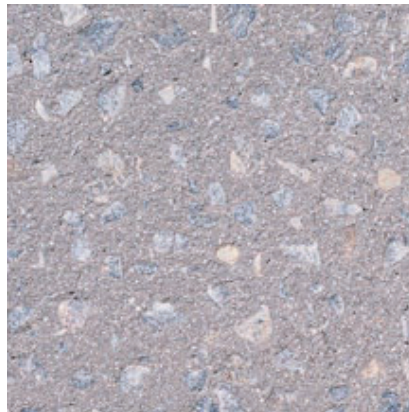
Color: Grey

Concrete Color: 50% - White; 50% - Gray

Texture: Retarded

Exposure: Medium

Description: Fine Aggregate: White silica sand; Coarse Aggregate: 1/2 to 1/4 in. blue gray limestone; Pigment: dark gray



181

Color: Grey

Concrete Color: 50% - White; 50% - Gray

Texture: Sandblasted

Exposure: Light

Description: Fine Aggregate: White silica sand; Coarse Aggregate: 1/2 to 1/4 in. blue gray limestone; Pigment: dark gray



182

Color: Brown

Concrete Color: Gray

Texture: Retarded

Exposure: Medium

Description: Fine Aggregate: crushed buff limestone; Coarse Aggregate: 50% - 1/2 to 1/8 in. gray marble, 50% - 1/2 to 1/8 in. pink marble



183

Color: Brown

Concrete Color: Gray

Texture: Sandblasted

Exposure: Medium

Description: Fine Aggregate: crushed buff limestone; Coarse Aggregate: 50% - 1/2 to 1/8 in. gray marble, 50% - 1/2 to 1/8 in. pink marble



184

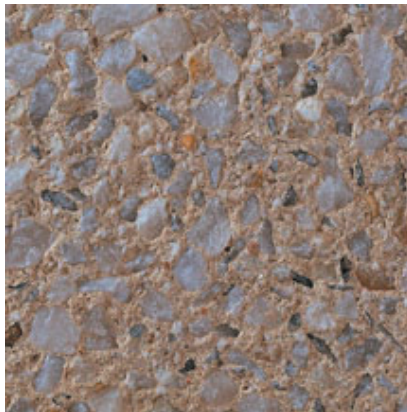
Color: White

Concrete Color: White

Texture: Retarded

Exposure: Medium

Description: Fine Aggregate: crushed White quartz, Coarse Aggregate: 80% - 5/8 to 9/32 in. White quartz, 20% - 1/2 to 1/4 in. amber quartz; Pigment: yellow



185

Color: White

Concrete Color: White

Texture: Sandblasted

Exposure: Medium

Description: Fine Aggregate: crushed White quartz, Coarse Aggregate: 80% - 5/8 to 9/32 in. White quartz, 20% - 1/2 to 1/4 in. amber quartz; Pigment: yellow



186

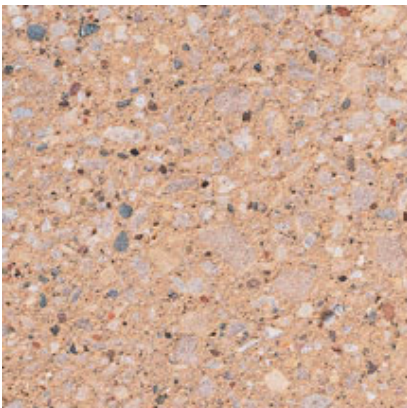
Color: Brown

Concrete Color: White

Texture: Retarded

Exposure: Medium

Description: Fine Aggregate: buff concrete sand; Coarse Aggregate: 1/2 to 1/4 in. buff limestone; Pigment: brown



187

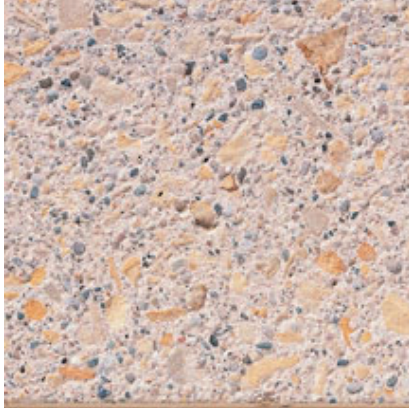
Color: Buff/Tan

Concrete Color: White

Texture: Sandblasted

Exposure: Medium

Description: Fine Aggregate: buff concrete sand; Coarse Aggregate: 1/2 to 1/4 in. buff limestone; Pigment: brown



188

Color: Buff/Tan

Concrete Color: White

Texture: Sandblasted

Exposure: Medium

Description: Fine Aggregate: buff concrete sand,
Coarse Aggregate: 3/4 to 3/8 in. buff marble



189

Color: Buff/Tan

Concrete Color: White

Texture: Sandblasted

Exposure: Light

Description: Fine Aggregate: buff concrete sand,
Coarse Aggregate: 3/4 to 3/8 in. buff marble



190

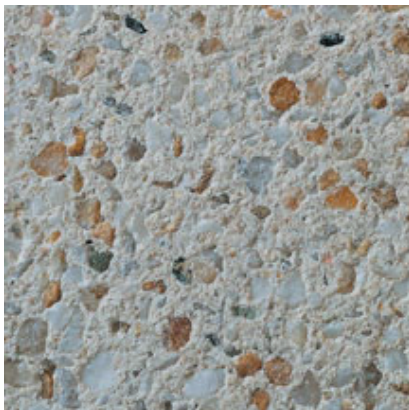
Color: White - Buff/Tan

Concrete Color: White

Texture: Retarded

Exposure: Deep

Description: Fine Aggregate: White silica concrete sand; Coarse Aggregate: 80% - 1/2 to 1/4 in. amber quartz, 20% - 1/2 to 1/4 in. White quartz



191

Color: White

Concrete Color: White

Texture: Sandblasted

Exposure: Deep

Description: Fine Aggregate: White silica concrete sand; Coarse Aggregate: 80% - 1/2 to 1/4 in. amber quartz, 20% - 1/2 to 1/4 in. White quartz



192

Color: Multicolored

Concrete Color: White

Texture: Retarded

Exposure: Medium

Description: Fine Aggregate: multicolored river sand;
Coarse Aggregate: 5/8 to 1/4 in. multicolored river
gravel; Pigment: buff



193

Color: Multicolored

Concrete Color: White

Texture: Sandblasted

Exposure: Medium

Description: Fine Aggregate: multicolored river sand;
Coarse Aggregate: 5/8 to 1/4 in. multicolored river
gravel; Pigment: buff



194

Color: Buff/Tan

Concrete Color: Antique White

Texture: Retarded

Exposure: Medium

Description: Fine Aggregate: crushed salt and pepper
granite; Coarse Aggregate: 3/8 to 1/8 in. salt and
pepper granite



195

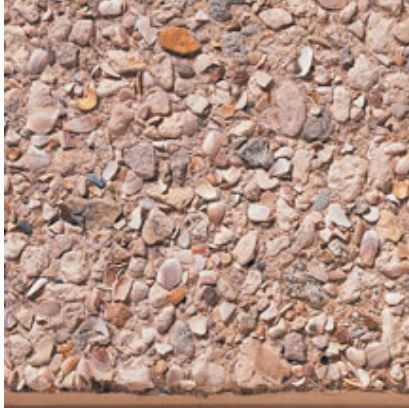
Color: Buff/Tan

Concrete Color: Antique White

Texture: Sandblasted

Exposure: Light

Description: Fine Aggregate: crushed salt and pepper
granite; Coarse Aggregate: 3/8 to 1/8 in. salt and
pepper granite



196

Color: Buff/Tan

Concrete Color: White

Texture: Retarded

Exposure: Medium

Description: Fine Aggregate: crushed White limestone; Coarse Aggregate: 1/2 to 1/4 in. buff limestone; Pigment: buff



197

Color: Buff/Tan

Concrete Color: White

Texture: Sandblasted

Exposure: Deep

Description: Fine Aggregate: crushed White limestone; Coarse Aggregate: 1/2 to 1/4 in. buff limestone; Pigment: buff



198

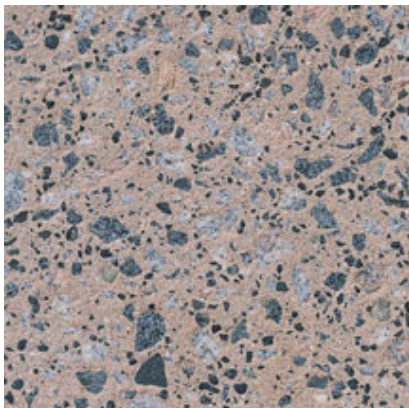
Color: Black - Grey

Concrete Color: White

Texture: Retarded

Exposure: Medium

Description: Fine Aggregate: 80% - buff masonry sand, 20% - black granite grit; Coarse Aggregate: 45% - gray granite, 30% - pink granite, 25% - black granite; Pigment: buff



199

Color: Black - Buff/Tan

Concrete Color: White

Texture: Sandblasted

Exposure: Medium

Description: Fine Aggregate: 80% - buff masonry sand, 20% - black granite grit; Coarse Aggregate: 45% - gray granite, 30% - pink granite, 25% - black granite; Pigment: buff



200

Color: Grey

Concrete Color: White

Texture: Retarded

Exposure: Medium

Description: Fine Aggregate: crushed gray granite,
Coarse Aggregate: 1/2 to 3/8 in. White granite



201

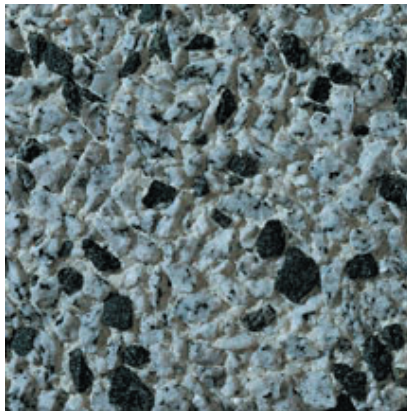
Color: Grey

Concrete Color: White

Texture: Sandblasted

Exposure: Light

Description: Fine Aggregate: crushed gray granite,
Coarse Aggregate: 1/2 to 3/8 in. White granite



202

Color: Black - White

Concrete Color: White

Texture: Retarded

Exposure: Medium

Description: Fine Aggregate: crushed White marble;
Coarse Aggregate: 80% - 1/2 to 3/8 in. White granite,
20% - 1/2 to 1/4 in. black granite



203

Color: Black - White

Concrete Color: White

Texture: Sandblasted

Exposure: Medium

Description: Fine Aggregate: crushed White marble;
Coarse Aggregate: 80% - 1/2 to 3/8 in. White granite,
20% - 1/2 to 1/4 in. black granite



204

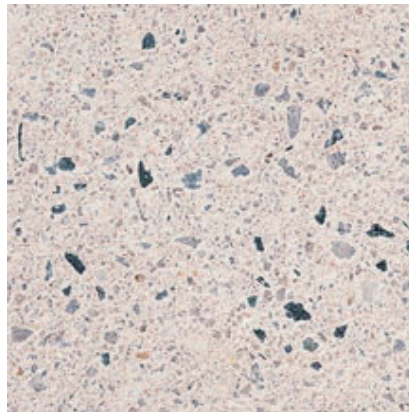
Color: Grey

Concrete Color: White

Texture: Retarded

Exposure: Medium

Description: Fine Aggregate: crushed gray quartz;
Coarse Aggregate: 90% - 1/2 to 1/4 in. gray quartz, 10%
- 3/8 to 1/8 in. black granite



205

Color: White

Concrete Color: White

Texture: Sandblasted

Exposure: Medium

Description: Fine Aggregate: crushed gray quartz;
Coarse Aggregate: 90% - 1/2 to 1/4 in. gray quartz, 10%
- 3/8 to 1/8 in. black granite



206

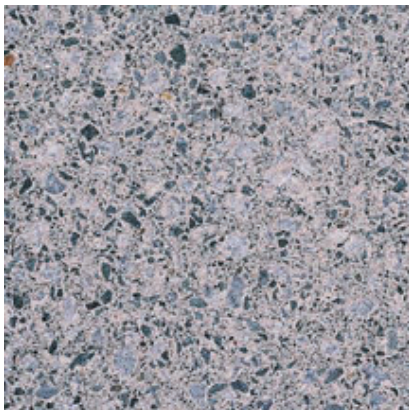
Color: Black - Grey

Concrete Color: gray

Texture: Retarded

Exposure: Medium

Description: Fine Aggregate: crushed black granite;
Coarse Aggregate: 1/2 to 1/4 in. gray limestone



207

Color: Black - Grey

Concrete Color: Gray

Texture: Sandblasted

Exposure: Medium

Description: Fine Aggregate: crushed black granite;
Coarse Aggregate: 1/2 to 1/4 in. gray limestone



208

Color: Grey

Concrete Color: Gray

Texture: Retarded

Exposure: Medium

Description: Fine Aggregate: crushed gray granite;
Coarse Aggregate: 1/2 to 1/4 in. White quartz



209

Color: Grey

Concrete Color: Gray

Texture: Sandblasted

Exposure: Medium

Description: Fine Aggregate: crushed gray granite;
Coarse Aggregate: 1/2 to 1/4 in. White quartz



210

Color: Buff/Tan

Concrete Color: White

Texture: Retarded

Exposure: Medium

Description: Fine Aggregate: crushed White quartz;
Coarse Aggregate: 80% - 1/2 to 1/4 in. amber quartz



211

Color: Grey - Buff/Tan

Concrete Color: White

Texture: Sandblasted

Exposure: Medium

Description: Fine Aggregate: crushed White quartz;
Coarse Aggregate: 80% - 1/2 to 1/4 in. amber quartz,
20% - 5/8 to 9/32 in. White quartz; Pigment: black



212

Color: White

Concrete Color: White

Texture: Retarded

Exposure: Deep

Description: Fine Aggregate: White river sand ; Coarse Aggregate: 7/8 to 9/16 in. White river gravel



213

Color: White

Concrete Color: White

Texture: Sandblasted

Exposure: Deep

Description: Fine Aggregate: White river sand ; Coarse Aggregate: 7/8 to 9/16 in. White river gravel



214

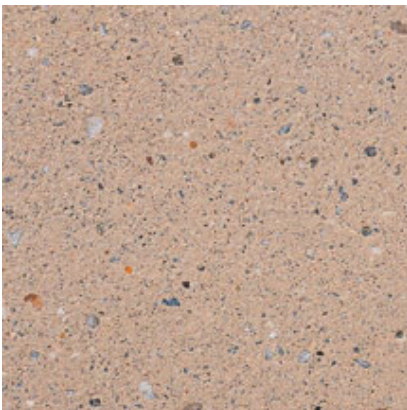
Color: Buff/Tan

Concrete Color: Antique White

Texture: Sandblasted

Exposure: Deep

Description: Fine Aggregate: reddish brown concrete sand; Coarse Aggregate: 80% - 3/4 to 3/8 in. buff, river gravel, 20% - 5/8 to 3/8 in. multicolor, river gravel



215

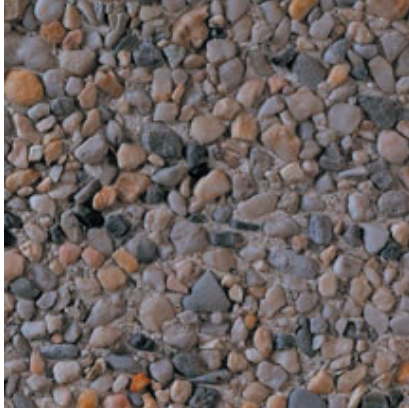
Color: Buff/Tan

Concrete Color: Antique White

Texture: Sandblasted

Exposure: Light

Description: Fine Aggregate: reddish brown concrete sand; Coarse Aggregate: 80% - 3/4 to 3/8 in. buff, river gravel, 20% - 5/8 to 3/8 in. multicolor, river gravel



216

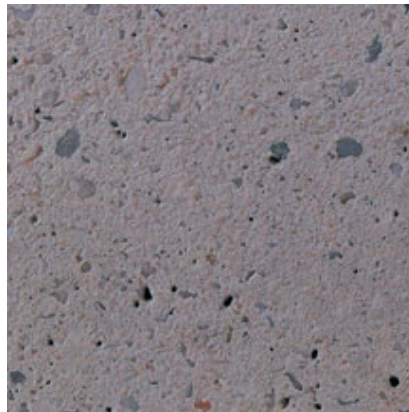
Color: White

Concrete Color: White

Texture: Retarded

Exposure: Medium

Description: Fine Aggregate: White masonry sand;
Coarse Aggregate: 1/2 to 1/4 in. White river gravel



217

Color: White

Concrete Color: White

Texture: Sandblasted

Exposure: Light

Description: Fine Aggregate: White masonry sand;
Coarse Aggregate: 1/2 to 1/4 in. White river gravel



218

Color: Grey

Concrete Color: 2/3 - Gray; 1/3 - White

Texture: Retarded

Exposure: Medium

Description: Fine Aggregate: 80% - crushed black granite, 20% - silica sand; Coarse Aggregate: 1/2 to 1/4 in. salt and pepper granite



219

Color: Grey

Concrete Color: 2/3 - Gray; 1/3 - White

Texture: Sandblasted

Exposure: Medium

Description: Fine Aggregate: 80% - crushed black granite, 20% - silica sand; Coarse Aggregate: 1/2 to 1/4 in. salt and pepper granite



220

Color: White

Concrete Color: 93% - White; 7% - Gray

Texture: Retarded

Exposure: Deep

Description: Fine Aggregate: White masonry sand;
Coarse Aggregate: crushed oyster shell



221

Color: Brown

Concrete Color: White

Texture: Sandblasted

Exposure: Medium

Description: Fine Aggregate: crushed gray limestone;
Coarse Aggregate: 1/2 in. gray limestone; Pigment: dark buff



222

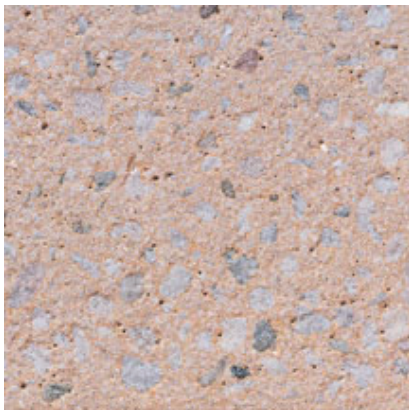
Color: Brown

Concrete Color: White

Texture: Sandblasted

Exposure: Light

Description: Fine Aggregate: crushed gray limestone;
Coarse Aggregate: 1/2 in. gray limestone; Pigment: dark buff



223

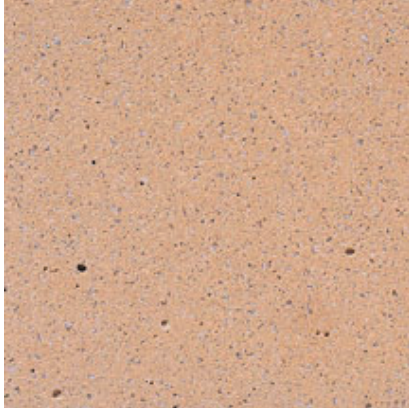
Color: Buff/Tan

Concrete Color: 75% - White; 25% - Gray

Texture: Sandblasted

Exposure: Medium

Description: Fine Aggregate: crushed White limestone;
Coarse Aggregate: 1/2 to 1/4 in. light gray limestone;
Pigment: yellow and buff



224

Color: Buff/Tan

Concrete Color: 75% - White; 25% - Gray

Texture: Sandblasted

Exposure: Light

Description: Fine Aggregate: crushed White limestone;
Coarse Aggregate: 1/2 to 1/4 in. light gray limestone;
Pigment: yellow and buff



225

Color: Brown

Concrete Color: White

Finish: Honed

Exposure: Medium

Description: Fine Aggregate: crushed White limestone;
Coarse Aggregate: 3/8 to 1/8 in. White limestone;
Pigment: ocher and green



226

Color: Brown

Concrete Color: White

Texture: Acid Etched

Exposure: Light

Description: Fine Aggregate: crushed White limestone;
Coarse Aggregate: 3/8 to 1/8 in. White limestone;
Pigment: ocher and green



227

Color: Grey

Concrete Color: White

Texture: Sandblasted

Exposure: Medium

Description: Fine Aggregate: crushed gray limestone;
Coarse Aggregate: 1/2 in. gray limestone, Pigment:
brown



228

Color: Grey

Concrete Color: White

Texture: Sandblasted

Exposure: Light

Description: Fine Aggregate: crushed gray limestone;
Coarse Aggregate: 1/2 in. gray limestone, Pigment:
brown



229

Color: Grey

Concrete Color: Gray

Texture: Sandblasted

Exposure: Medium

Description: Fine Aggregate: crushed gray limestone;
Coarse Aggregate: 1/2 in. gray limestone



230

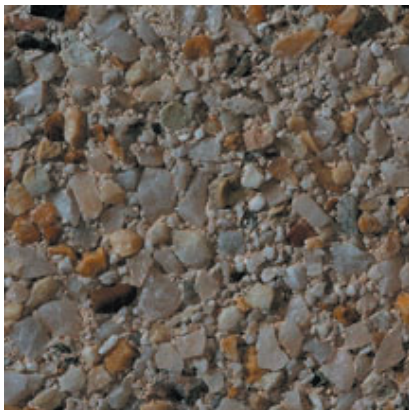
Color: Grey

Concrete Color: Gray

Texture: Sandblasted

Exposure: Light

Description: Fine Aggregate: crushed gray limestone;
Coarse Aggregate: 1/2 in. gray limestone



231

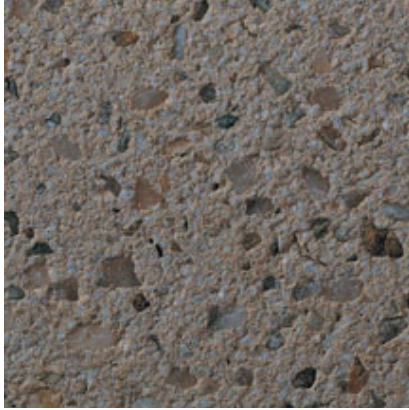
Color: White

Concrete Color: White

Texture: Retarded

Exposure: Medium

Description: Fine Aggregate: crushed White marble;
Coarse Aggregate: 60% - 1/2 to 1/4 in. amber quartz,
40% - 1/2 to 1/4 in. White quartz



232

Color: White

Concrete Color: White

Texture: Sandblasted

Exposure: Medium

Description: Fine Aggregate: crushed White marble;
Coarse Aggregate: 60% - 1/2 to 1/4 in. amber quartz,
40% - 1/2 to 1/4 in. White quartz



233

Color: White

Concrete Color: White

Texture: Retarded

Exposure: Medium

Description: Fine Aggregate: crushed White quarts;
Coarse Aggregate: 5/8 to 9/32 in. White quartz;
Pigment: yellow



234

Color: White

Concrete Color: White

Texture: Sandblasted

Exposure: Light

Description: Fine Aggregate: crushed White quarts;
Coarse Aggregate: 5/8 to 9/32 in. White quartz;
Pigment: yellow



235

Color: Grey

Concrete Color: 70% - Gray; 30% - White

Texture: Sandblasted

Exposure: Deep

Description: Fine Aggregate: crushed reddish brown
limestone; Coarse Aggregate: 5/8 to 9/32 in. reddish
brown limestone



236

Color: Grey

Concrete Color: 70% - Gray; 30% - White

Texture: Sandblasted

Exposure: Medium

Description: Fine Aggregate: crushed reddish brown limestone; Coarse Aggregate: 5/8 to 9/32 in. reddish brown limestone



237

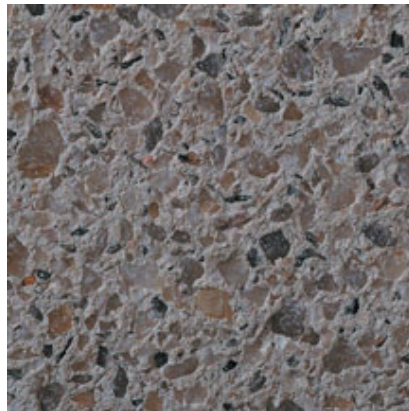
Color: Pink

Concrete Color: White

Texture: Retarded

Exposure: Medium

Description: Fine Aggregate: crushed flamingo quartz; Coarse Aggregate: 90% - 5/8 to 9/32 in. flamingo quartz, 10% - 3/8 to 1/8 in. pink feldspar



238

Color: Pink

Concrete Color: White

Texture: Sandblasted

Exposure: Medium

Description: Fine Aggregate: crushed flamingo quartz; Coarse Aggregate: 90% - 5/8 to 9/32 in. flamingo quartz, 10% - 3/8 to 1/8 in. pink feldspar



239

Color: Grey

Concrete Color: 50% - White; 50% - Gray

Texture: Retarded

Exposure: Deep

Description: Fine Aggregate: crushed black granite; Coarse Aggregate: 1/2 to 1/4 in. salt and pepper granite



240

Color: Grey

Concrete Color: 50% - White; 50% - Gray

Texture: Sandblasted

Exposure: Medium

Description: Fine Aggregate: crushed black granite;
Coarse Aggregate: 1/2 to 1/4 in. salt and pepper granite



241

Color: Red

Concrete Color: White

Texture: Acid Etched

Exposure: Deep

Description: Fine Aggregate: reddish brown concrete sand; Coarse Aggregate: 3/8 to 1/8 in. reddish brown river gravel



242

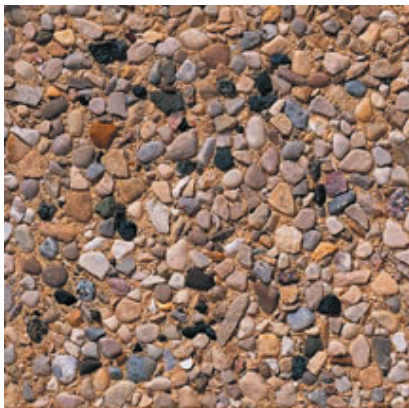
Color: Red

Concrete Color: White

Texture: Acid Etched

Exposure: Medium

Description: Fine Aggregate: reddish brown concrete sand; Coarse Aggregate: 3/8 to 1/8 in. reddish brown river gravel



243

Color: Brown

Concrete Color: White

Texture: Retarded

Exposure: Medium

Description: Fine Aggregate: buff masonry sand;
Coarse Aggregate: 1/2 to 1/4 in. multicolored river gravel; Pigment: buff



244

Color: Brown

Concrete Color: White

Texture: Acid Etched

Exposure: Light

Description: Fine Aggregate: buff masonry sand;
Coarse Aggregate: 1/2 to 1/4 in. multicolored river gravel; Pigment: buff



245

Color: Buff/Tan

Concrete Color: White

Texture: Sandblasted

Exposure: Medium

Description: Fine Aggregate: buff concrete sand;
Coarse Aggregate: 1/2 to 1/4 in. buff marble; Pigment: buff



246

Color: Buff/Tan

Concrete Color: White

Texture: Sandblasted

Exposure: Light

Description: Fine Aggregate: buff concrete sand;
Coarse Aggregate: 1/2 to 1/4 in. buff marble; Pigment: buff



247

Color: Brown

Concrete Color: White

Texture: Retarded

Exposure: Medium

Description: Fine Aggregate: buff masonry sand;
Coarse Aggregate: 80% - 3/8 to 1/8 in. buff limestone,
20% - 3/8 to 1/8 in. pink quartzite, Pigment: buff



248

Color: Brown

Concrete Color: White

Texture: Sandblasted

Exposure: Medium

Description: Fine Aggregate: buff masonry sand;
Coarse Aggregate: 80% - 3/8 to 1/8 in. buff limestone,
20% - 3/8 to 1/8 in. pink quartzite, Pigment: buff



249

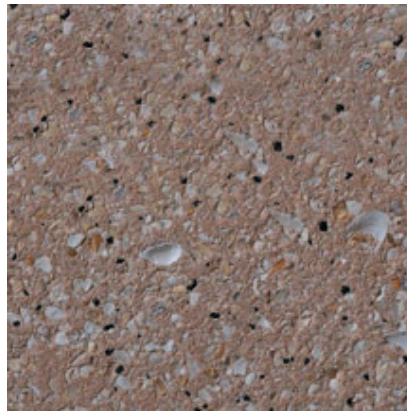
Color: Brown

Concrete Color: White

Texture: Sandblasted

Exposure: Medium

Description: Fine Aggregate: crushed gray limestone;
Coarse Aggregate: 50% - 1/2 in. gray limestone, 40%
- coquina shell, 10% - crushed black granite grit;
Pigment: 50% dark buff; 50% dark red



250

Color: Brown

Concrete Color: White

Texture: Sandblasted

Exposure: Light

Description: Fine Aggregate: crushed gray limestone;
Coarse Aggregate: 50% - 1/2 in. gray limestone, 40%
- coquina shell, 10% - crushed black granite grit;
Pigment: 50% dark buff; 50% dark red



251

Color: Brown

Concrete Color: White

Texture: Retarded

Exposure: Medium

Description: Fine Aggregate: buff masonry sand;
Coarse Aggregate: 3/8 to 1/8 in. buff limestone



252

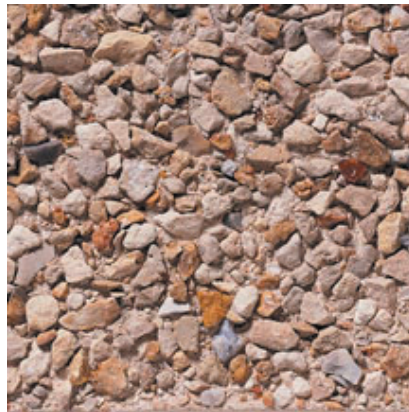
Color: Buff/Tan

Concrete Color: White

Texture: Acid Etched

Exposure: Medium

Description: Fine Aggregate: buff masonry sand;
Coarse Aggregate: 3/8 to 1/8 in. buff limestone



253

Color: Buff/Tan

Concrete Color: White

Texture: Retarded

Exposure: Medium

Description: Fine Aggregate: brown masonry sand;
Coarse Aggregate: 1/2 to 1/8 in. buff limestone



254

Color: Buff/Tan

Concrete Color: White

Texture: Sandblasted

Exposure: Light

Description: Fine Aggregate: brown masonry sand;
Coarse Aggregate: 1/2 to 1/8 in. buff limestone



255

Color: Buff/Tan

Concrete Color: White

Texture: Retarded

Exposure: Medium

Description: Fine Aggregate: buff concrete sand;
Coarse Aggregate: 3/8 to 1/8 in. buff limestone



256

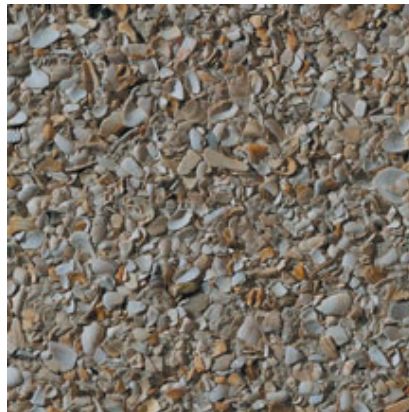
Color: Buff/Tan

Concrete Color: White

Texture: Acid Etched

Exposure: Medium

Description: Fine Aggregate: buff concrete sand;
Coarse Aggregate: 3/8 to 1/8 in. buff limestone



257

Color: Grey

Concrete Color: White

Texture: Retarded

Exposure: Medium

Description: Fine Aggregate: crushed gray limestone;
Coarse Aggregate: 60% - coquina shell, 40% - 1/2 in.
gray limestone; Pigment: dark buff



258

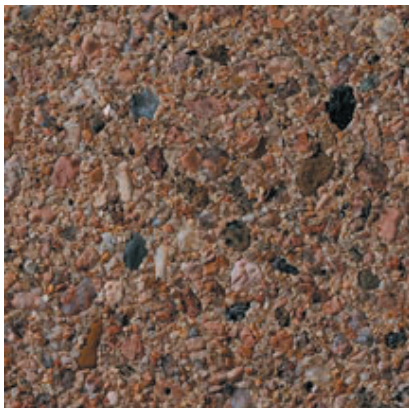
Color: Grey

Concrete Color: White

Texture: Sandblasted

Exposure: Light

Description: Fine Aggregate: crushed gray limestone;
Coarse Aggregate: 60% - coquina shell, 40% - 1/2 in.
gray limestone; Pigment: dark buff



259

Color: Red

Concrete Color: White

Texture: Retarded

Exposure: Light

Description: Fine Aggregate: reddish brown concrete
sand; Coarse Aggregate: 3/8 to 1/8 in. reddish brown
river gravel; Pigment: yellow



260

Color: Red

Concrete Color: White

Texture: Acid Etched

Exposure: Medium

Description: Fine Aggregate: reddish brown concrete sand; Coarse Aggregate: 3/8 to 1/8 in. reddish brown river gravel; Pigment: yellow



261

Color: Brown

Concrete Color: 70% - White; 30% - Gray

Texture: Sandblasted

Exposure: Medium

Description: Fine Aggregate: crushed brown granite; Coarse Aggregate: 1/2 to 1/4 in. pink granite; Pigment: reddish brown and yellow



262

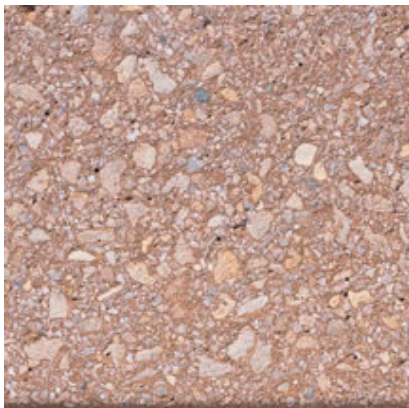
Color: Brown

Concrete Color: 70% - White; 30% - Gray

Texture: Sandblasted

Exposure: Light

Description: Fine Aggregate: crushed brown granite; Coarse Aggregate: 1/2 to 1/4 in. pink granite; Pigment: reddish brown and yellow



263

Color: Brown

Concrete Color: White

Texture: Sandblasted

Exposure: Medium

Description: Fine Aggregate: buff crushed limestone; Coarse Aggregate: 1/2 to 1/4 in. buff limestone; Pigment: ocher



264

Color: Brown

Concrete Color: White

Texture: Acid Etched

Exposure: Light

Description: Fine Aggregate: buff crushed limestone;
Coarse Aggregate: 1/2 to 1/4 in. buff limestone;
Pigment: ocher



265

Color: Pink

Concrete Color: White

Texture: Retarded

Exposure: Medium

Description: Fine Aggregate: crushed pink feldspar,
Coarse Aggregate: 1/2 to 1/4 in. pink feldspar



266A

Color: Pink

Concrete Color: White

Texture: Sandblasted

Exposure: Deep

Description: Fine Aggregate: crushed pink feldspar,
Coarse Aggregate: 1/2 to 1/4 in. pink feldspar



266B

Color: Pink

Concrete Color: White

Texture: Sandblasted

Exposure: Light

Description: Fine Aggregate: crushed pink feldspar,
Coarse Aggregate: 1/2 to 1/4 in. pink feldspar



267

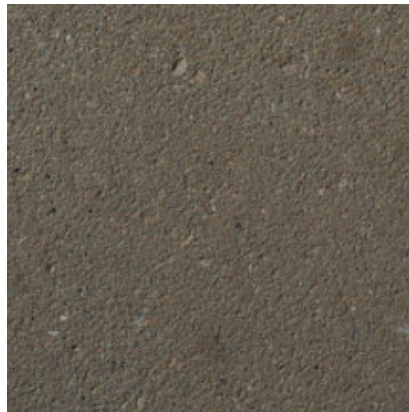
Color: Brown

Concrete Color: 70% - Gray; 30% - White

Texture: Retarded

Exposure: Medium

Description: Fine Aggregate: crushed reddish brown limestone; Coarse Aggregate: 5/8 to 9/32 in. reddish brown limestone; Pigment: buff



268

Color: Brown

Concrete Color: 70% - Gray; 30% - White

Texture: Sandblasted

Exposure: Light

Description: Fine Aggregate: crushed reddish brown limestone; Coarse Aggregate: 5/8 to 9/32 in. reddish brown limestone; Pigment: buff



269

Color: Brown

Concrete Color: Gray

Texture: Retarded

Exposure: Medium

Description: Fine Aggregate: crushed tan marble, Coarse Aggregate: 5/8 to 9/32 in. tan marble, Pigment: yellow



270

Color: Brown

Concrete Color: Gray

Texture: Sandblasted

Exposure: Medium

Description: Fine Aggregate: crushed tan marble, Coarse Aggregate: 5/8 to 9/32 in. tan marble, Pigment: yellow



271

Color: Brown

Concrete Color: White

Texture: Retarded

Exposure: Medium

Description: Fine Aggregate: buff masonry sand;
Coarse Aggregate: 3/8 to 1/8 in. buff limestone;
Pigment: buff



272

Color: Buff/Tan

Concrete Color: White

Texture: Acid Etched

Exposure: Light

Description: Fine Aggregate: buff masonry sand;
Coarse Aggregate: 3/8 to 1/8 in. buff limestone;
Pigment: buff



273

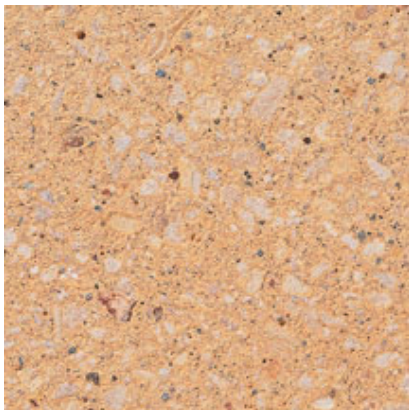
Color: Buff/Tan

Concrete Color: White

Texture: Retarded

Exposure: Medium

Description: Fine Aggregate: buff masonry sand;
Coarse Aggregate: 3/4 to 3/8 in. buff marble; Pigment:
buff



274

Color: Buff/Tan

Concrete Color: White

Texture: Sandblasted

Exposure: Medium

Description: Fine Aggregate: buff masonry sand;
Coarse Aggregate: 3/4 to 3/8 in. buff marble; Pigment:
buff



275

Color: Brown

Concrete Color: Gray

Texture: Retarded

Exposure: Light

Description: Fine Aggregate: crushed tan limestone;
Coarse Aggregate: 5/8 to 1/4 in. tan limestone; Pigment:
yellow



276

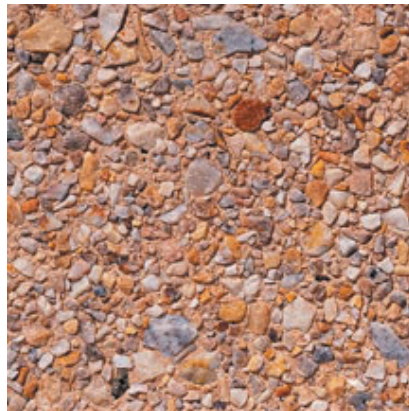
Color: Brown

Concrete Color: Gray

Texture: Sandblasted

Exposure: Light

Description: Fine Aggregate: crushed tan limestone;
Coarse Aggregate: 5/8 to 1/4 in. tan limestone; Pigment:
yellow



277

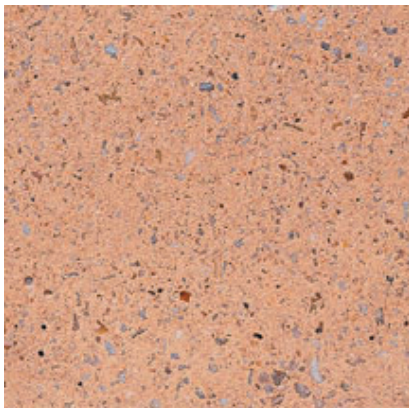
Color: Buff/Tan

Concrete Color: White

Texture: Retarded

Exposure: Medium

Description: Fine Aggregate: crushed buff quartzite;
Coarse Aggregate: 9/16 to 3/16 in. buff quartzite;
Pigment: dark orange buff



278

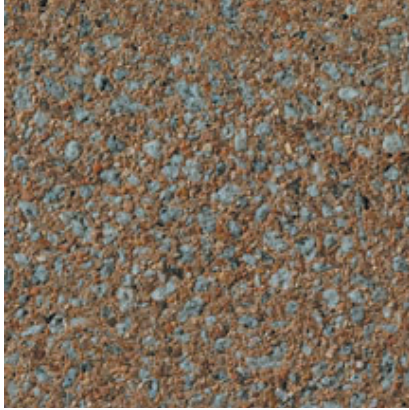
Color: Buff/Tan

Concrete Color: White

Texture: Acid Etched

Exposure: Light

Description: Fine Aggregate: crushed buff quartzite;
Coarse Aggregate: 9/16 to 3/16 in. buff quartzite;
Pigment: dark orange buff



279

Color: Brown

Concrete Color: White

Texture: Acid Etched

Exposure: Deep

Description: Fine Aggregate: reddish brown concrete sand; Coarse Aggregate: 3/8 to 1/8 in. gray granite; Pigment: buff



280

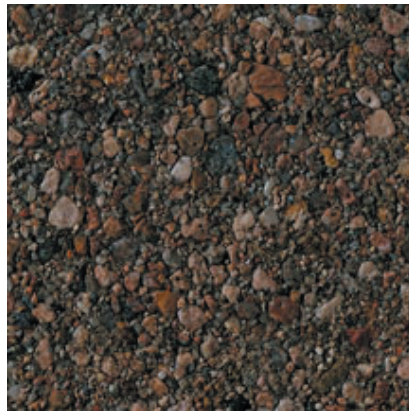
Color: Brown

Concrete Color: White

Texture: Acid Etched

Exposure: Medium

Description: Fine Aggregate: reddish brown concrete sand; Coarse Aggregate: 3/8 to 1/8 in. gray granite; Pigment: buff



281

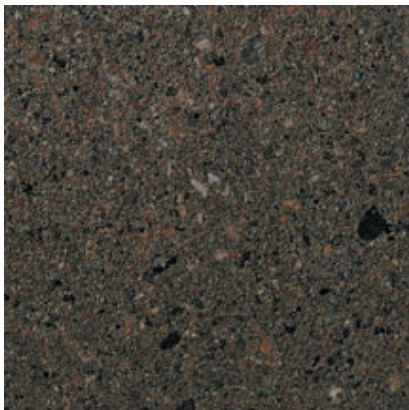
Color: Brown

Concrete Color: Gray

Texture: Retarded

Exposure: Medium

Description: Fine Aggregate: reddish brown concrete sand; Coarse Aggregate: 3/8 to 1/8 in. reddish brown river gravel; Pigment: yellow



282

Color: Brown

Concrete Color: Gray

Texture: Acid Etched

Exposure: Medium

Description: Fine Aggregate: reddish brown concrete sand; Coarse Aggregate: 3/8 to 1/8 in. reddish brown river gravel; Pigment: yellow



283

Color: Brown

Concrete Color: 60% - White; 40% - Gray

Texture: Retarded

Exposure: Medium

Description: Fine Aggregate: crushed pink feldspar, Coarse Aggregate: 70% - 1/2 to 1/4 in. gray granite, 30% - 5/8 to 9/32 in. pink feldspar



284

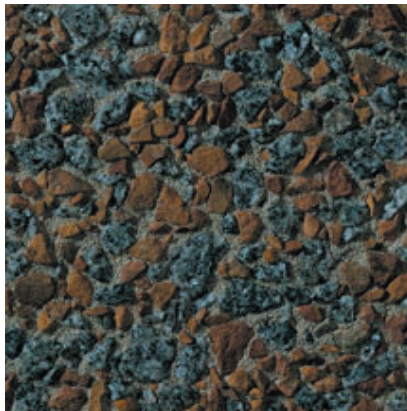
Color: Brown

Concrete Color: 60% - White; 40% - Gray

Texture: Sandblasted

Exposure: Medium

Description: Fine Aggregate: crushed pink feldspar, Coarse Aggregate: 70% - 1/2 to 1/4 in. gray granite, 30% - 5/8 to 9/32 in. pink feldspar



285

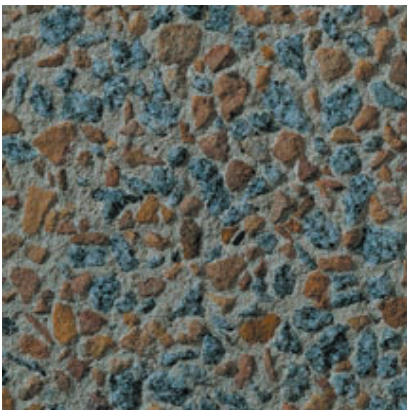
Color: Brown - Grey

Concrete Color: 75% - White; 25% - Gray

Texture: Retarded

Exposure: Medium

Description: Fine Aggregate: White silica sand; Coarse Aggregate: 60% - 9/16 to 3/16 in. gray granite, 40% - 1/2 to 1/4 in. brown, limestone; Pigment: buff



286

Color: Brown - Grey

Concrete Color: 75% - White; 25% - Gray

Texture: Sandblasted

Exposure: Medium

Description: Fine Aggregate: White silica sand; Coarse Aggregate: 60% - 9/16 to 3/16 in. gray granite, 40% - 1/2 to 1/4 in. brown, limestone; Pigment: buff



287

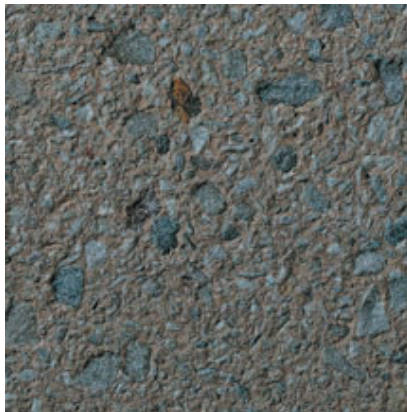
Color: Brown

Concrete Color: White

Texture: Retarded

Exposure: Light

Description: Fine Aggregate: crushed tan marble;
Coarse Aggregate: 9/16 to 3/16 in. tan marble; Pigment:
brown



288

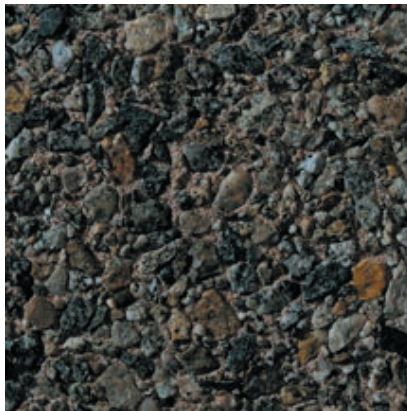
Color: Brown

Concrete Color: White

Texture: Sandblasted

Exposure: Light

Description: Fine Aggregate: crushed tan marble;
Coarse Aggregate: 9/16 to 3/16 in. tan marble; Pigment:
brown



289

Color: Grey

Concrete Color: White

Texture: Retarded

Exposure: Medium

Description: Fine Aggregate: crushed gray granite;
Coarse Aggregate: 1/2 to 1/4 in. gray granite; Pigment:
red



290

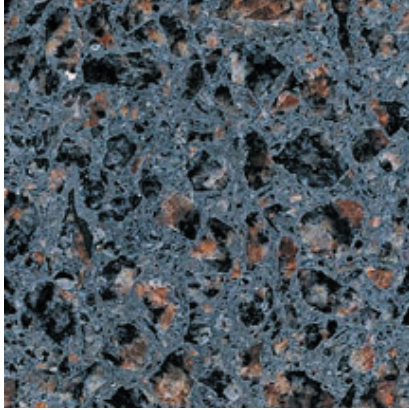
Color: Brown

Concrete Color: White

Texture: Acid Etched

Exposure: Medium

Description: Fine Aggregate: crushed gray granite;
Coarse Aggregate: 1/2 to 1/4 in. gray granite; Pigment:
red



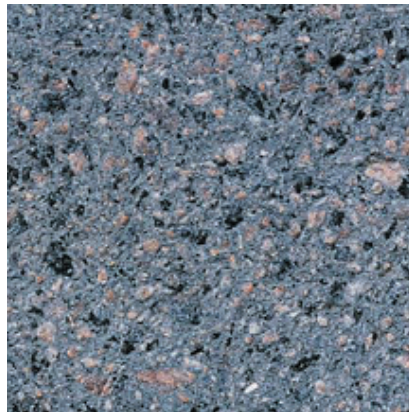
291A

Color: Pink - Grey

Concrete Color: gray

Finish: Polished

Description: Fine Aggregate: crushed red granite;
Coarse Aggregate: 1/2 to 1/8 in. red granite; Pigment:
black



291B

Color: Grey

Concrete Color: Gray

Texture: Sandblasted

Exposure: Light

Description: Fine Aggregate: crushed red granite;
Coarse Aggregate: 1/2 to 1/8 in. red granite; Pigment:
black



291C

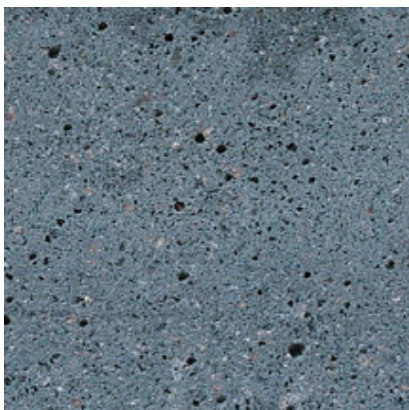
Color: Pink - Grey

Concrete Color: Gray

Texture: Retarded

Exposure: Medium

Description: Fine Aggregate: crushed red granite;
Coarse Aggregate: 1/2 to 1/8 in. red granite; Pigment:
black



291D

Color: Grey

Concrete Color: Gray

Texture: Acid Etched

Exposure: Light

Description: Fine Aggregate: crushed red granite;
Coarse Aggregate: 1/2 to 1/8 in. red granite; Pigment:
black



292

Color: Brown

Concrete Color: Gray

Texture: Retarded

Exposure: Light

Description: Fine Aggregate: crushed brown limestone;
Coarse Aggregate: 3/8 to 1/8 in. brown limestone;
Pigment: brown



293A

Color: Brown

Concrete Color: Gray

Texture: Sandblasted

Exposure: Deep

Description: Fine Aggregate: crushed brown limestone;
Coarse Aggregate: 3/8 to 1/8 in. brown limestone;
Pigment: brown



293B

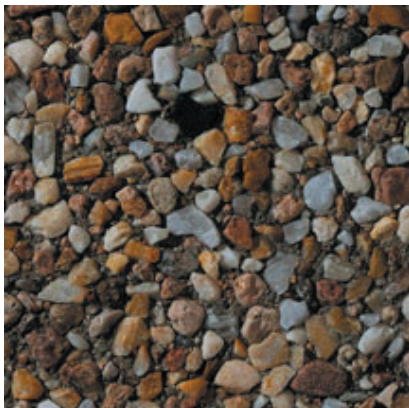
Color: Brown

Concrete Color: Gray

Texture: Sandblasted

Exposure: Medium

Description: Fine Aggregate: crushed brown limestone;
Coarse Aggregate: 3/8 to 1/8 in. brown limestone;
Pigment: brown



294

Color: Brown

Concrete Color: Gray

Texture: Retarded

Exposure: Medium

Description: Fine Aggregate: reddish brown concrete sand;
Coarse Aggregate: 60% - 1/2 to 1/4 in. amber quartz, 40% - 3/8 to 1/8 in. reddish brown river gravel



295

Color: Brown

Concrete Color: Gray

Texture: Sandblasted

Exposure: Medium

Description: Fine Aggregate: reddish brown concrete sand; Coarse Aggregate: 60% - 1/2 to 1/4 in. amber quartz, 40% - 3/8 to 1/8 in. reddish brown river gravel



296

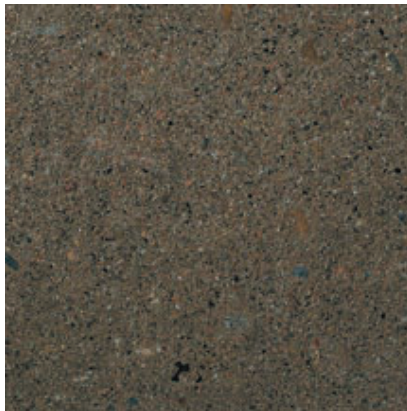
Color: Brown

Concrete Color: Gray

Texture: Retarded

Exposure: Medium

Description: Fine Aggregate: reddish brown concrete sand; Coarse Aggregate: 3/4 to 1/2 in. reddish brown river gravel; Pigment: yellow



297

Color: Brown

Concrete Color: Gray

Texture: Acid Etched

Exposure: Medium

Description: Fine Aggregate: reddish brown concrete sand; Coarse Aggregate: 3/4 to 1/2 in. reddish brown river gravel; Pigment: yellow



298

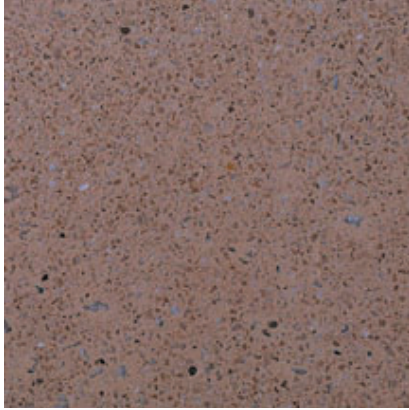
Color: Red

Concrete Color: White

Texture: Acid Etched

Exposure: Medium

Description: Fine Aggregate: 50% - reddish brown concrete sand, 50% - crushed gray granite, Coarse Aggregate: 3/8 to 1/8 in. reddish brown river gravel, Pigment: 60% brown; 40% yellow



299

Color: Pink

Concrete Color: White

Texture: Acid Etched

Exposure: Medium

Description: Fine Aggregate: crushed White marble;
Coarse Aggregate: 5/8 to 3/8 in. White marble, Pigment:
brown



300

Color: Brown

Concrete Color: White

Texture: Acid Etched

Exposure: Deep

Description: Fine Aggregate: reddish brown concrete
sand, Coarse Aggregate: 1/2 in. reddish brown river
gravel, Pigment: yellow



301

Color: Brown

Concrete Color: White

Texture: Acid Etched

Exposure: Medium

Description: Fine Aggregate: reddish brown concrete
sand, Coarse Aggregate: 1/2 in. reddish brown river
gravel, Pigment: yellow



302

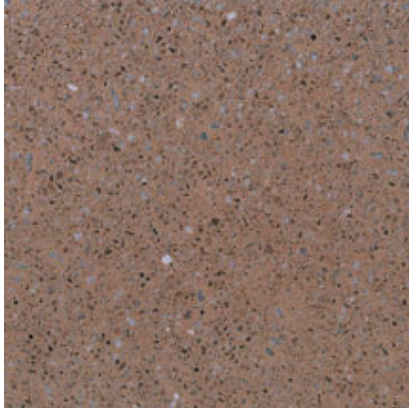
Color: Red

Concrete Color: 50% - White; 50% - Gray

Texture: Acid Etched

Exposure: Medium

Description: Fine Aggregate: reddish brown concrete
sand; Coarse Aggregate: 3/8 to 1/8 in. reddish brown
river gravel; Pigment: buff



303

Color: Pink

Concrete Color: White

Texture: Acid Etched

Exposure: Medium

Description: Fine Aggregate: crushed White marble; Coarse Aggregate: 5/8 to 3/8 in. White marble; Pigment: yellow



304

Color: Brown

Concrete Color: Gray

Texture: Acid Etched

Exposure: Light

Description: Fine Aggregate: reddish brown concrete sand; Coarse Aggregate: 3/8 to 1/8 in. reddish brown river gravel



305

Color: Grey

Concrete Color: White

Texture: Acid Etched

Exposure: Light

Description: Fine Aggregate: reddish brown concrete sand; Coarse Aggregate: 3/8 to 1/8 in. reddish brown river gravel; Pigment: black



306

Color: Brown

Concrete Color: Gray

Texture: Retarded

Exposure: Medium

Description: Fine Aggregate: reddish brown masonry sand; Coarse Aggregate: 1/2 to 1/4 in. reddish brown river gravel



307

Color: Brown

Concrete Color: Gray

Texture: Acid Etched

Exposure: Medium

Description: Fine Aggregate: reddish brown masonry sand; Coarse Aggregate: 1/2 to 1/4 in. reddish brown river gravel



308

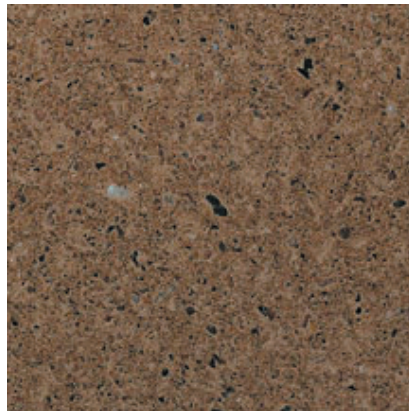
Color: Brown

Concrete Color: White

Texture: Retarded

Exposure: Medium

Description: Fine Aggregate: reddish brown concrete sand; Coarse Aggregate: 3/8 to 1/8 in. reddish brown river gravel; Pigment: 50% brown; 50% yellow



309

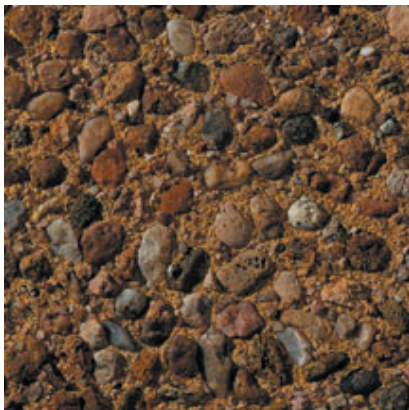
Color: Brown

Concrete Color: White

Texture: Acid Etched

Exposure: Medium

Description: Fine Aggregate: reddish brown concrete sand; Coarse Aggregate: 3/8 to 1/8 in. reddish brown river gravel; Pigment: 50% brown; 50% yellow



310

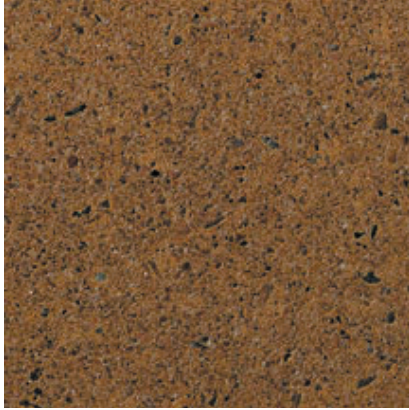
Color: Brown

Concrete Color: White

Texture: Retarded

Exposure: Medium

Description: Fine Aggregate: reddish brown concrete sand ; Coarse Aggregate: 1/2 to 1/4 in. reddish brown river gravel; Pigment: yellow



311

Color: Brown

Concrete Color: White

Texture: Acid Etched

Exposure: Medium

Description: Fine Aggregate: reddish brown concrete sand ; Coarse Aggregate: 1/2 to 1/4 in. reddish brown river gravel; Pigment: yellow



312

Color: Brown

Concrete Color: White

Texture: Retarded

Exposure: Deep

Description: Fine Aggregate: buff masonry sand; Coarse Aggregate: 1/2 to 1/4 in. buff limestone; Pigment: buff



313

Color: Buff/Tan

Concrete Color: White

Texture: Acid Etched

Exposure: Medium

Description: Fine Aggregate: buff masonry sand; Coarse Aggregate: 1/2 to 1/4 in. buff limestone; Pigment: buff



314

Color: Buff/Tan

Concrete Color: White

Texture: Sandblasted

Exposure: Medium

Description: Fine Aggregate: buff concrete sand; Coarse Aggregate: 50% - 3/4 to 3/8 in. buff limestone 50% - 3/4 to 3/8 in. brownish red limestone; Pigment: buff



315

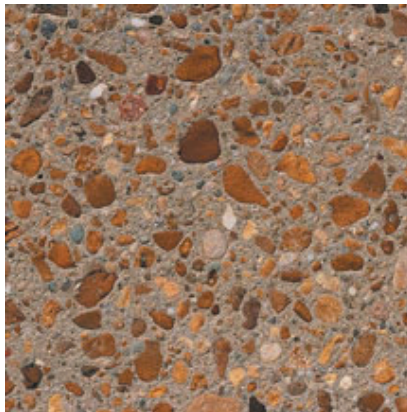
Color: Brown

Concrete Color: White

Texture: Acid Etched

Exposure: Deep

Description: Fine Aggregate: buff concrete sand;
Coarse Aggregate: 50% - 3/4 to 3/8 in. buff limestone
50% - 3/4 to 3/8 in. brownish red limestone; Pigment:
buff



316

Color: Brown

Concrete Color: 75% - Antique White; 25% - Gray

Texture: Sandblasted

Exposure: Medium

Description: Fine Aggregate: multicolored concrete
sand; Coarse Aggregate: 1/2 to 1/4 in. multicolored river
gravel; Pigment: buff



317

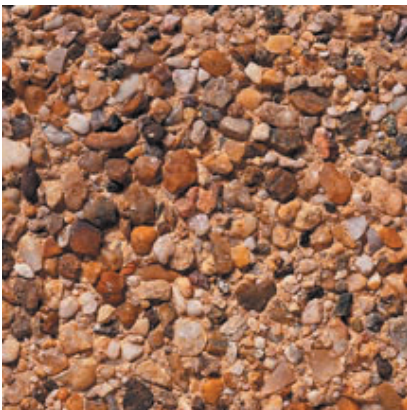
Color: Brown

Concrete Color: 75% - Antique White; 25% - Gray

Texture: Acid Etched

Exposure: Medium

Description: Fine Aggregate: multicolored concrete
sand; Coarse Aggregate: 1/2 to 1/4 in. multicolored river
gravel; Pigment: buff



318

Color: Brown

Concrete Color: White

Texture: Retarded

Exposure: Medium

Description: Fine Aggregate: reddish brown concrete
sand; Coarse Aggregate: 1/2 to 1/4 in. multicolored river
gravel; Pigment: yellow



319

Color: Buff/Tan

Concrete Color: White

Texture: Sandblasted

Exposure: Medium

Description: Fine Aggregate: reddish brown concrete sand; Coarse Aggregate: 1/2 to 1/4 in. multicolored river gravel; Pigment: yellow



320

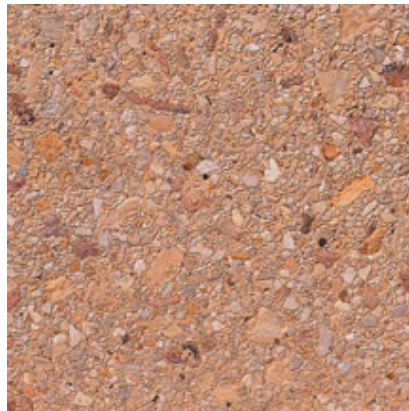
Color: Buff/Tan

Concrete Color: White

Texture: Sandblasted

Exposure: Medium

Description: Fine Aggregate: buff concrete sand; Coarse Aggregate: 3/4 to 1/8 in. buff limestone ; Pigment: buff



321

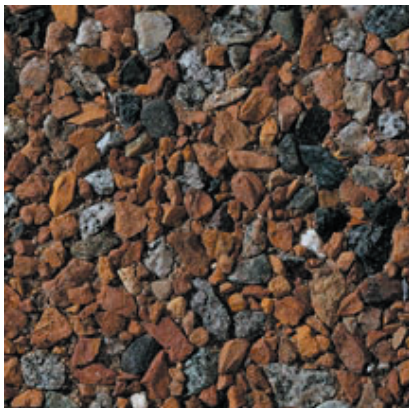
Color: Buff/Tan

Concrete Color: White

Texture: Acid Etched

Exposure: Medium

Description: Fine Aggregate: buff concrete sand; Coarse Aggregate: 3/4 to 1/8 in. buff limestone ; Pigment: buff



322

Color: Brown

Concrete Color: Gray

Texture: Retarded

Exposure: Medium

Description: Fine Aggregate: reddish brown masonry sand; Coarse Aggregate: 50% - 1/2 to 1/4 in. gray granite, 50% - 1/2 to 1/4 in. buff river gravel; Pigment: brown



323

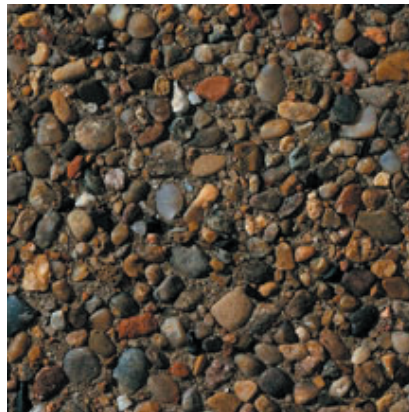
Color: Brown

Concrete Color: Gray

Texture: Sandblasted

Exposure: Medium

Description: Fine Aggregate: reddish brown masonry sand; Coarse Aggregate: 50% - 1/2 to 1/4 in. gray granite, 50% - 1/2 to 1/4 in. buff river gravel; Pigment: brown



324

Color: Brown

Concrete Color: Gray

Texture: Sandblasted

Exposure: Medium

Description: Fine Aggregate: reddish brown concrete sand; Coarse Aggregate: 3/8 to 3/32 in. reddish brown gravel



325

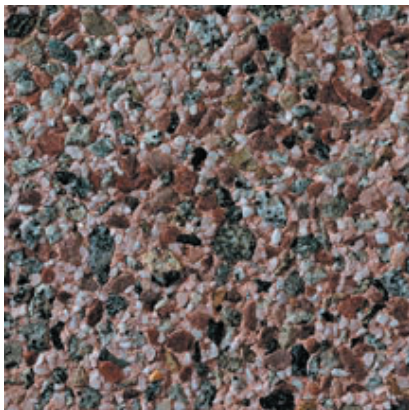
Color: Grey

Concrete Color: Gray

Texture: Sandblasted

Exposure: Light

Description: Fine Aggregate: reddish brown concrete sand; Coarse Aggregate: 3/8 to 3/32 in. reddish brown gravel



326

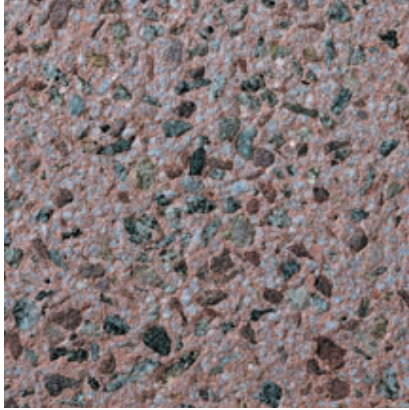
Color: Pink

Concrete Color: White

Texture: Retarded

Exposure: Light

Description: Fine Aggregate: crushed White marble; Coarse Aggregate: 80% - 1/2 to 1/4 in. gray granite, 20% - 9/32 to 1/8 in red quartzite; Pigment: red



327

Color: Pink

Concrete Color: White

Texture: Sandblasted

Exposure: Light

Description: Fine Aggregate: crushed White marble;
Coarse Aggregate: 80% - 1/2 to 1/4 in. gray granite,
20% - 9/32 to 1/8 in red quartzite; Pigment: red



328

Color: Brown

Concrete Color: Gray

Texture: Retarded

Exposure: Medium

Description: Fine Aggregate: brown concrete sand;
Coarse Aggregate: 1/2 to 1/4 in. brown river gravel;
Pigment: brown



329

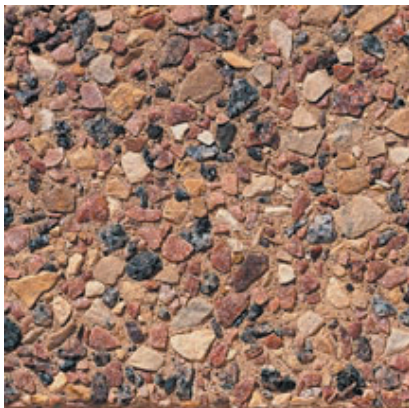
Color: Buff/Tan

Concrete Color: Gray

Texture: Sandblasted

Exposure: Medium

Description: Fine Aggregate: brown concrete sand;
Coarse Aggregate: 1/2 to 1/4 in. brown river gravel;
Pigment: brown



330

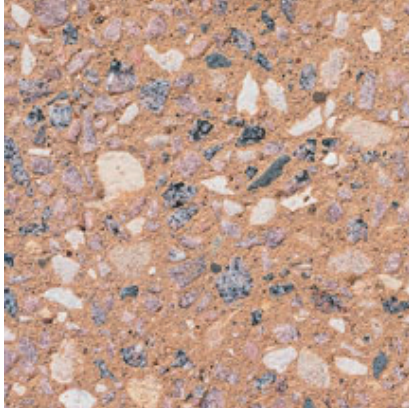
Color: Brown

Concrete Color: White

Texture: Retarded

Exposure: Medium

Description: Fine Aggregate: buff masonry sand;
Coarse Aggregate: 40% - 1/2 to 1/4 in. buff limestone,
20% - 3/8 to 1/8 in. White limestone, 20% - 3/8 to 1/8
in. pink quartzite, 20% - 3/8 to 1/8 in. black granite;
Pigment: buff



331

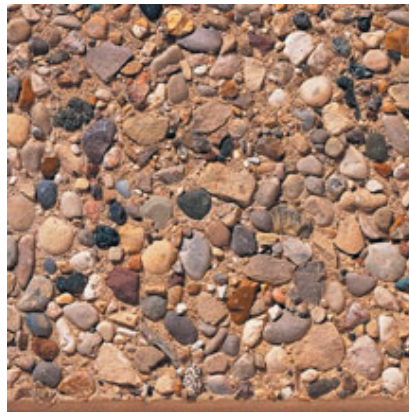
Color: Buff/Tan

Concrete Color: White

Texture: Sandblasted

Exposure: Medium

Description: Fine Aggregate: buff masonry sand;
Coarse Aggregate: 40% - 1/2 to 1/4 in. buff limestone,
20% - 3/8 to 1/8 in. White limestone, 20% - 3/8 to 1/8
in. pink quartzite, 20% - 3/8 to 1/8 in. black granite;
Pigment: buff



332

Color: Brown

Concrete Color: White

Texture: Retarded

Exposure: Medium

Description: Fine Aggregate: buff concrete sand;
Coarse Aggregate: 1/2 to 1/4 in. multicolored river
gravel; Pigment: brown



333

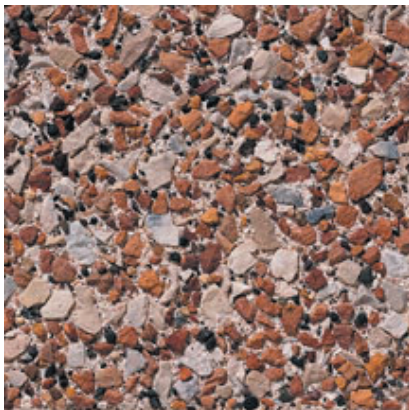
Color: Buff/Tan

Concrete Color: White

Texture: Sandblasted

Exposure: Medium

Description: Fine Aggregate: buff concrete sand;
Coarse Aggregate: 1/2 to 1/4 in. multicolored river
gravel; Pigment: brown



334

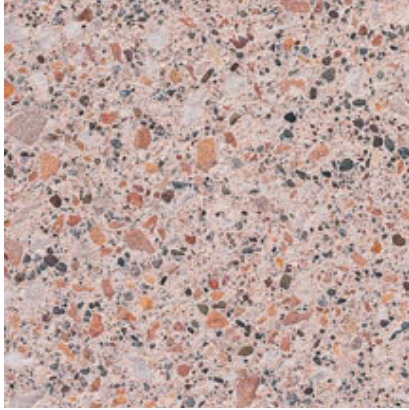
Color: Brown

Concrete Color: White

Texture: Retarded

Exposure: Medium

Description: Fine Aggregate: buff concrete sand;
Coarse Aggregate: 50% - 1/2 to 1/4 in. brownish red
limestone 50% - 3/8 to 1/8 in. White limestone



335

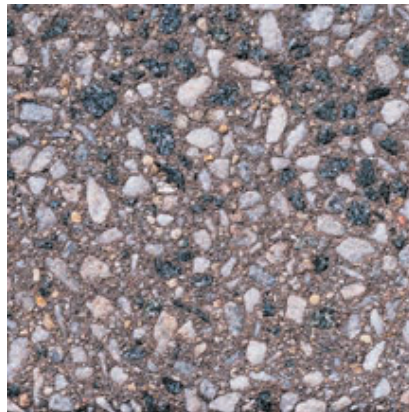
Color: Pink

Concrete Color: White

Texture: Sandblasted

Exposure: Medium

Description: Fine Aggregate: buff concrete sand;
Coarse Aggregate: 50% - 1/2 to 1/4 in. brownish red limestone 50% - 3/8 to 1/8 in. White limestone



336

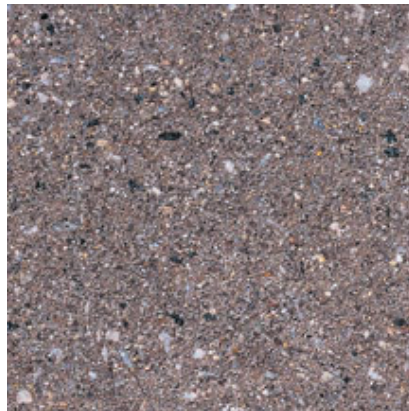
Color: White - Brown

Concrete Color: White

Texture: Sandblasted

Exposure: Medium

Description: Fine Aggregate: White concrete sand;
Coarse Aggregate: 50% - 3/8 to 1/8 in. White limestone 50% - 3/8 to 1/8 in. salt and pepper granite; Pigment: brown



337

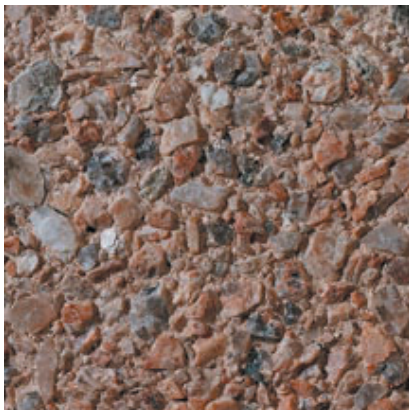
Color: Brown

Concrete Color: White

Texture: Acid Etched

Exposure: Medium

Description: Fine Aggregate: White concrete sand;
Coarse Aggregate: 50% - 3/8 to 1/8 in. White limestone 50% - 3/8 to 1/8 in. salt and pepper granite; Pigment: brown



338

Color: Pink

Concrete Color: White

Texture: Retarded

Exposure: Medium

Description: Fine Aggregate: crushed pink feldspar;
Coarse Aggregate: 5/8 to 9/32 in. pink feldspar;
Pigment: red



339

Color: Pink

Concrete Color: White

Texture: Sandblasted

Exposure: Medium

Description: Fine Aggregate: crushed pink feldspar;
Coarse Aggregate: 5/8 to 9/32 in. pink feldspar;
Pigment: red



340

Color: Pink

Concrete Color: White

Texture: Retarded

Exposure: Medium

Description: Fine Aggregate: crushed White marble;
Coarse Aggregate: 75% - 5/8 to 9/32 in. pink feldspar
25% - 5/8 to 9/32 in. gray granite; Pigment: red



341

Color: Pink

Concrete Color: White

Texture: Sandblasted

Exposure: Light

Description: Fine Aggregate: crushed White marble;
Coarse Aggregate: 75% - 5/8 to 9/32 in. pink feldspar
25% - 5/8 to 9/32 in. gray granite; Pigment: red



342

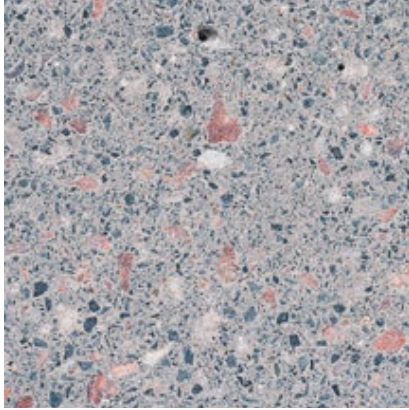
Color: Pink

Concrete Color: 50% - White; 50% - Gray

Texture: Sandblasted

Exposure: Deep

Description: Fine Aggregate: crushed gray quartz;
Coarse Aggregate: 75% - 1/2 to 1/4 in. pink feldspar,
25% - 1/2 to 1/4 in. White marble



343

Color: Pink

Concrete Color: 50% - White; 50% - Gray

Texture: Sandblasted

Exposure: Medium

Description: Fine Aggregate: crushed gray quartz;
Coarse Aggregate: 75% - 1/2 to 1/4 in. pink feldspar,
25% - 1/2 to 1/4 in. White marble



344

Color: Pink

Concrete Color: 50% - White; 50% - Gray

Texture: Retarded

Exposure: Medium

Description: Fine Aggregate: crushed pink feldspar;
Coarse Aggregate: 50% - 5/8 to 9/32 in. gray granite,
50% - 5/8 to 9/32 in. pink feldspar; Pigment: red



345

Color: Pink

Concrete Color: 50% - White; 50% - Gray

Texture: Sandblasted

Exposure: Medium

Description: Fine Aggregate: crushed pink feldspar;
Coarse Aggregate: 50% - 5/8 to 9/32 in. gray granite,
50% - 5/8 to 9/32 in. pink feldspar; Pigment: red



346

Color: Pink

Concrete Color: 50% - White; 50% - Gray

Texture: Sandblasted

Exposure: Medium

Description: Fine Aggregate: crushed brown granite ;
Coarse Aggregate: 1/2 to 1/4 in. pink granite; Pigment:
black



347

Color: Pink

Concrete Color: 50% - White, 50% - Gray

Texture: Sandblasted

Exposure: Light

Description: Fine Aggregate: crushed brown granite ;
Coarse Aggregate: 1/2 to 1/4 in. pink granite; Pigment:
black



348

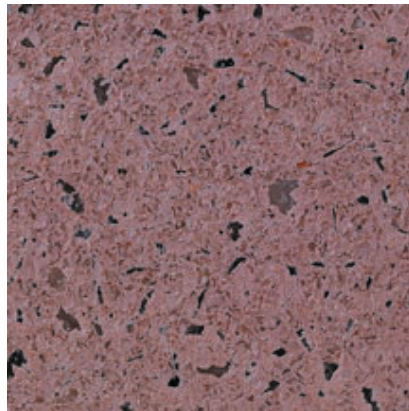
Color: Pink

Concrete Color: White

Texture: Retarded

Exposure: Medium

Description: Fine Aggregate: crushed pink quartz;
Coarse Aggregate: 5/8 to 9/32 in. pink quartz; Pigment:
red



349

Color: Pink

Concrete Color: White

Texture: Acid Etched

Exposure: Medium

Description: Fine Aggregate: crushed pink quartz;
Coarse Aggregate: 5/8 to 9/32 in. pink quartz; Pigment:
red



350

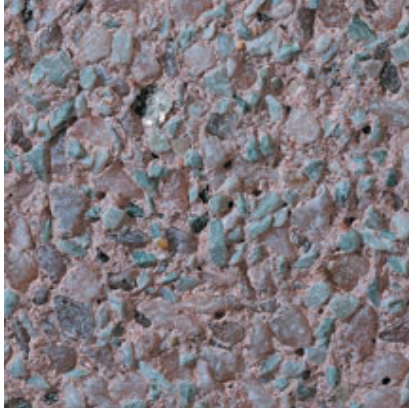
Color: Pink

Concrete Color: White

Texture: Retarded

Exposure: Medium

Description: Fine Aggregate: crushed flamingo quartz;
Coarse Aggregate: 80% - 5/8 to 9/32 in. flamingo
quartz, 20% - 9/32 to 1/8 in. green quartzite; Pigment:
red



351

Color: Pink

Concrete Color: White

Texture: Sandblasted

Exposure: Medium

Description: Fine Aggregate: crushed flamingo quartz; Coarse Aggregate: 80% - 5/8 to 9/32 in. flamingo quartz, 20% - 9/32 to 1/8 in. green quartzite; Pigment: red



352

Color: Pink

Concrete Color: White

Texture: Retarded

Exposure: Light

Description: Fine Aggregate: crushed pink marble; Coarse Aggregate: 9/16 to 3/16 in. pink marble; Pigment: red



353

Color: Pink

Concrete Color: White

Texture: Sandblasted

Exposure: Light

Description: Fine Aggregate: crushed pink marble; Coarse Aggregate: 9/16 to 3/16 in. pink marble; Pigment: red



354

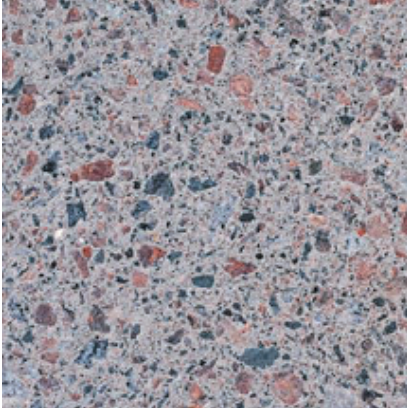
Color: Pink

Concrete Color: White

Texture: Sandblasted

Exposure: Medium

Description: Fine Aggregate: White silica sand; Coarse Aggregate: 40% - 1/2 to 1/4 in. salt and pepper granite, 35% - 1/2 to 1/4 in. pink feldspar, 25% - 3/8 to 1/8 in. black granite



355

Color: Pink

Concrete Color: White

Texture: Acid Etched

Exposure: Medium

Description: Fine Aggregate: White silica sand; Coarse Aggregate: 40% - 1/2 to 1/4 in. salt and pepper granite, 35% - 1/2 to 1/4 in. pink feldspar, 25% - 3/8 to 1/8 in. black granite



356

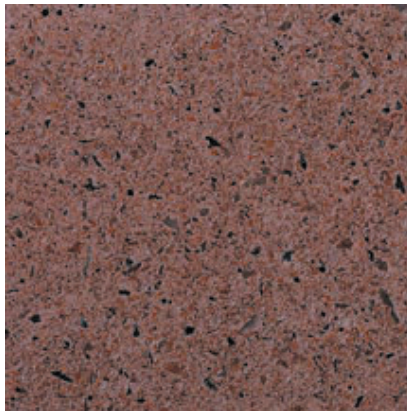
Color: Pink

Concrete Color: White

Texture: Retarded

Exposure: Medium

Description: Fine Aggregate: crushed pink feldspar ; Coarse Aggregate: 7/8 to 9/32 in. pink feldspar; Pigment: red



357

Color: Pink

Concrete Color: White

Texture: Sandblasted

Exposure: Medium

Description: Fine Aggregate: crushed pink feldspar ; Coarse Aggregate: 7/8 to 9/32 in. pink feldspar; Pigment: red



358

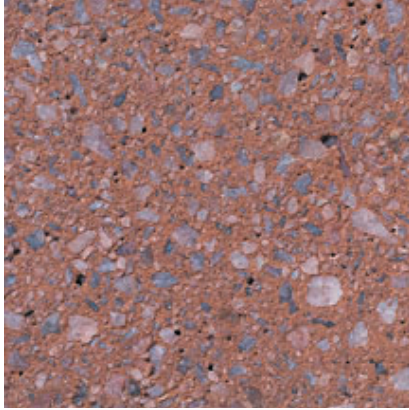
Color: Pink

Concrete Color: 50% - White; 50% - Gray

Texture: Retarded

Exposure: Medium

Description: Fine Aggregate: crushed rose quartz; Coarse Aggregate: 9/16 to 3/16 in. rose quartz; Pigment: reddish brown



359

Color: Pink

Concrete Color: 50% - White; 50% - Gray

Texture: Sandblasted

Exposure: Medium

Description: Fine Aggregate: crushed rose quartz;
Coarse Aggregate: 9/16 to 3/16 in. rose quartz; Pigment: reddish brown



360

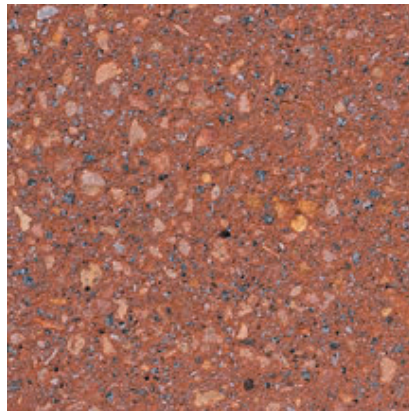
Color: Red

Concrete Color: 50% - White; 50% - Gray

Texture: Retarded

Exposure: Medium

Description: Fine Aggregate: crushed black granite;
Coarse Aggregate: 1/2 to 1/4 in. reddish brown limestone; Pigment: orange



361

Color: Red

Concrete Color: 50% - White; 50% - Gray

Texture: Sandblasted

Exposure: Medium

Description: Fine Aggregate: crushed black granite;
Coarse Aggregate: 1/2 to 1/4 in. reddish brown limestone; Pigment: orange



362

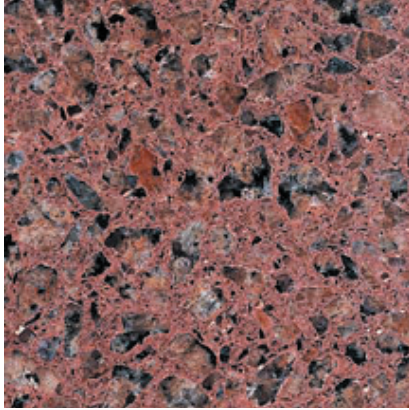
Color: Red

Concrete Color: White

Texture: Retarded

Exposure: Medium

Description: Fine Aggregate: crushed pink feldspar;
Coarse Aggregate: 7/8 to 5/8 in. pink feldspar



363A

Color: Pink

Concrete Color: White

Finish: Polished

Description: Fine Aggregate: crushed red granite;
Coarse Aggregate: 1/2 to 1/4 in. pink granite; Pigment:
red



363B

Color: Pink

Concrete Color: White

Texture: Sandblasted

Exposure: Light

Description: Fine Aggregate: crushed red granite;
Coarse Aggregate: 1/2 to 1/4 in. pink granite; Pigment:
red



363C

Color: Pink

Concrete Color: White

Texture: Retarded

Exposure: Medium

Description: Fine Aggregate: crushed red granite;
Coarse Aggregate: 1/2 to 1/4 in. pink granite; Pigment:
red



363D

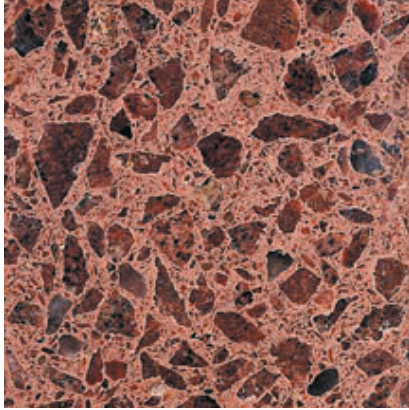
Color: Pink

Concrete Color: White

Texture: Acid Etched

Exposure: Light

Description: Fine Aggregate: crushed red granite;
Coarse Aggregate: 1/2 to 1/4 in. pink granite; Pigment:
red



364A

Color: Red

Concrete Color: White

Finish: Polished

Description: Fine Aggregate: crushed red granite;
Coarse Aggregate: 1/2 to 1/8 in. red granite; Pigment:
red



364B

Color: Pink

Concrete Color: White

Texture: Sandblasted

Exposure: Light

Description: Fine Aggregate: crushed red granite;
Coarse Aggregate: 1/2 to 1/8 in. red granite; Pigment:
red



364C

Color: Pink

Concrete Color: White

Texture: Retarded

Exposure: Medium

Description: Fine Aggregate: crushed red granite;
Coarse Aggregate: 1/2 to 1/8 in. red granite; Pigment:
red



364D

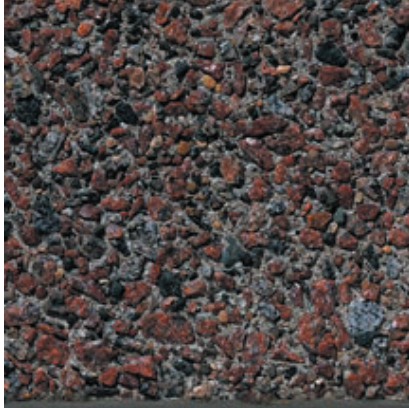
Color: Pink

Concrete Color: White

Texture: Acid Etched

Exposure: Light

Description: Fine Aggregate: crushed red granite;
Coarse Aggregate: 1/2 to 1/8 in. red granite; Pigment:
red



365

Color: Red

Concrete Color: Gray

Texture: Retarded

Exposure: Medium

Description: Fine Aggregate: crushed buff limestone;
Coarse Aggregate: 70% - 9/16 to 3/16 in. red granite,
30% - 3/8 to 1/8 in. black granite



366

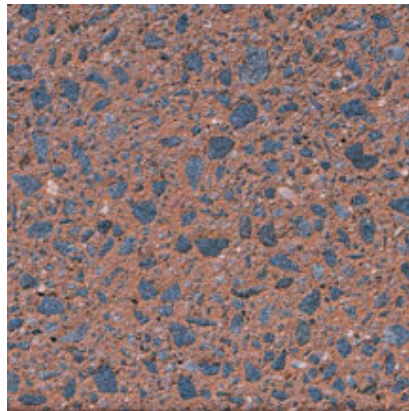
Color: Pink

Concrete Color: Gray

Texture: Sandblasted

Exposure: Medium

Description: Fine Aggregate: crushed buff limestone;
Coarse Aggregate: 70% - 9/16 to 3/16 in. red granite,
30% - 3/8 to 1/8 in. black granite



367

Color: Brown

Concrete Color: 70% - Gray; 30% - White

Texture: Sandblasted

Exposure: Medium

Description: Fine Aggregate: crushed brown granite;
Coarse Aggregate: 1/2 to 1/4 in. black granite; Pigment:
buff and orange



368

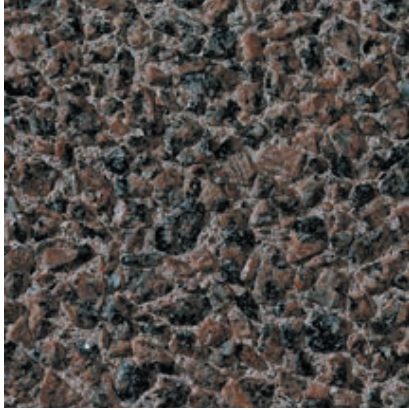
Color: Brown

Concrete Color: 70% - Gray; 30% - White

Texture: Acid Etched

Exposure: Light

Description: Fine Aggregate: crushed brown granite;
Coarse Aggregate: 1/2 to 1/4 in. black granite; Pigment:
buff and orange



369

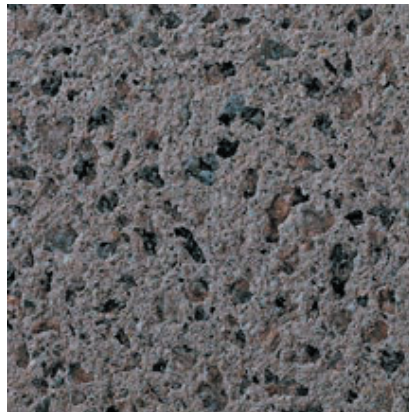
Color: Pink

Concrete Color: White

Texture: Retarded

Exposure: Medium

Description: Fine Aggregate: crushed gray granite;
Coarse Aggregate: 1/2 to 1/4 in. pink granite; Pigment:
red



370

Color: Grey

Concrete Color: White

Texture: Sandblasted

Exposure: Medium

Description: Fine Aggregate: crushed gray granite;
Coarse Aggregate: 1/2 to 1/4 in. pink granite; Pigment:
red



371

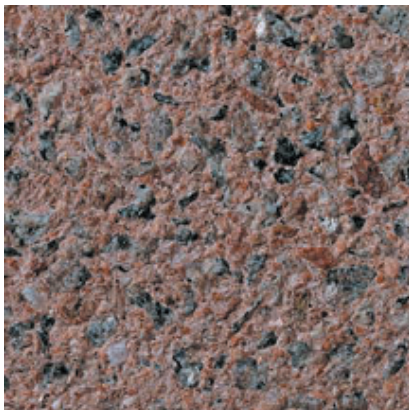
Color: Red

Concrete Color: White

Texture: Retarded

Exposure: Medium

Description: Fine Aggregate: crushed pink feldspar;
Coarse Aggregate: 80% - 1/2 to 1/4 in. pink granite,
20% - 1/2 to 1/4 in. red granite; Pigment: red



372

Color: Pink

Concrete Color: White

Texture: Sandblasted

Exposure: Medium

Description: Fine Aggregate: crushed pink feldspar;
Coarse Aggregate: 80% - 1/2 to 1/4 in. pink granite,
20% - 1/2 to 1/4 in. red granite; Pigment: red



373

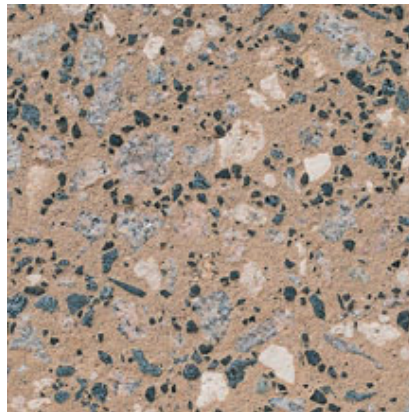
Color: Yellow - Black

Concrete Color: Antique White

Texture: Retarded

Exposure: Medium

Description: Fine Aggregate: 87% - crushed buff limestone, 13% - black granite grit; Coarse Aggregate: 67% - 1/2 to 1/4 in. pink granite, 22% - 1/2 to 1/4 in. buff limestone, 11% - 1/2 to 1/4 in. black granite; Pigment: red



374

Color: Yellow

Concrete Color: Antique White

Texture: Sandblasted

Exposure: Medium

Description: Fine Aggregate: 87% - crushed buff limestone, 13% - black granite grit; Coarse Aggregate: 67% - 1/2 to 1/4 in. pink granite, 22% - 1/2 to 1/4 in. buff limestone, 11% - 1/2 to 1/4 in. black granite; Pigment: red



375

Color: Pink

Concrete Color: White

Texture: Retarded

Exposure: Medium

Description: Fine Aggregate: 67% - buff concrete sand, 33% - black granite grit; Coarse Aggregate: 1/2 to 1/4 in. pink feldspar; Pigment: pink



376

Color: Pink

Concrete Color: White

Texture: Acid Etched

Exposure: Light

Description: Fine Aggregate: 67% - buff concrete sand, 33% - black granite grit; Coarse Aggregate: 1/2 to 1/4 in. pink feldspar; Pigment: pink



377

Color: Red

Concrete Color: Gray

Texture: Retarded

Exposure: Medium

Description: Fine Aggregate: crushed gray granite; Coarse Aggregate: 60% - 1/2 to 1/4 in. gray granite, 40% - 9/32 to 1/8 in. red quartzite; Pigment: red



378

Color: Pink

Concrete Color: Gray

Texture: Sandblasted

Exposure: Medium

Description: Fine Aggregate: crushed gray granite; Coarse Aggregate: 60% - 1/2 to 1/4 in. gray granite, 40% - 9/32 to 1/8 in. red quartzite; Pigment: red



379

Color: Red

Concrete Color: Gray

Texture: Retarded

Exposure: Medium

Description: Fine Aggregate: reddish brown masonry sand; Coarse Aggregate: 80% - 1/2 to 1/4 in. red granite, 20% - 1/2 to 1/4 in. pink granite; Pigment: red



380

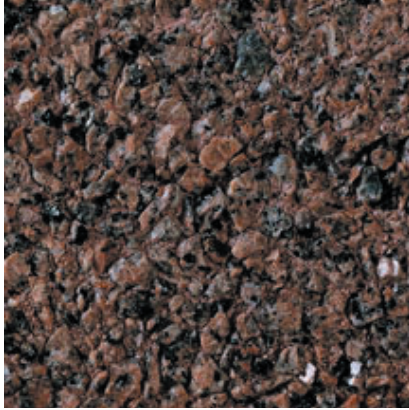
Color: Pink

Concrete Color: Gray

Texture: Sandblasted

Exposure: Medium

Description: Fine Aggregate: reddish brown masonry sand; Coarse Aggregate: 80% - 1/2 to 1/4 in. red granite, 20% - 1/2 to 1/4 in. pink granite; Pigment: red



381

Color: Red

Concrete Color: White

Texture: Retarded

Exposure: Medium

Description: Fine Aggregate: crushed pink granite;
Coarse Aggregate: 1/2 to 1/4 in. pink granite; Pigment:
pink



382

Color: Pink

Concrete Color: White

Texture: Acid Etched

Exposure: Medium

Description: Fine Aggregate: crushed pink granite;
Coarse Aggregate: 1/2 to 1/4 in. pink granite; Pigment:
pink



383

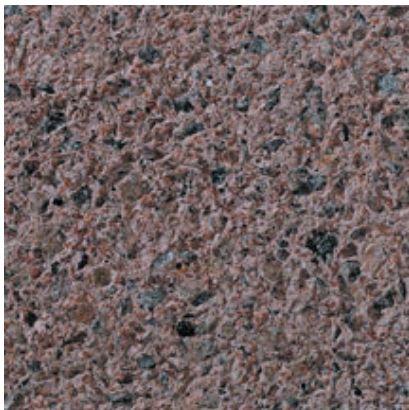
Color: Red

Concrete Color: White

Texture: Retarded

Exposure: Medium

Description: Fine Aggregate: crushed pink granite;
Coarse Aggregate: 3/4 to 1/2 in. pink granite; Pigment:
red



384

Color: Pink

Concrete Color: White

Texture: Sandblasted

Exposure: Medium

Description: Fine Aggregate: crushed pink granite;
Coarse Aggregate: 3/4 to 1/2 in. pink granite; Pigment:
red



385

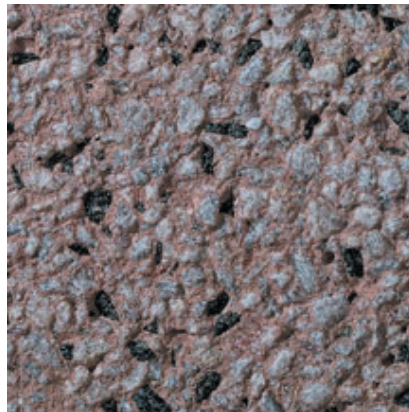
Color: Pink - Black

Concrete Color: Gray

Texture: Retarded

Exposure: Medium

Description: Fine Aggregate: crushed red quartzite;
Coarse Aggregate: 75% - 1/8 to 1/8 in. flamingo quartz,
25% - 5/8 to 9/32 in. black granite; Pigment: red



386

Color: Pink

Concrete Color: Gray

Texture: Sandblasted

Exposure: Light

Description: Fine Aggregate: crushed red quartzite;
Coarse Aggregate: 75% - 1/8 to 1/8 in. flamingo quartz,
25% - 5/8 to 9/32 in. black granite; Pigment: red



387

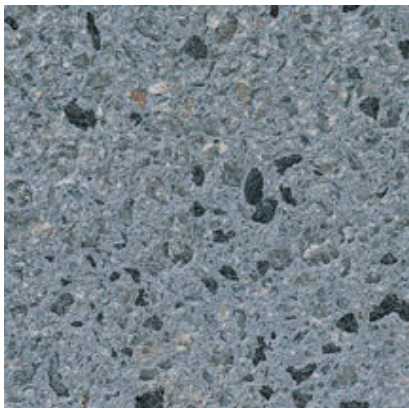
Color: Grey

Concrete Color: White

Texture: Retarded

Exposure: Medium

Description: Fine Aggregate: crushed gray quartz;
Coarse Aggregate: 70% - 9/16 to 3/16 in. gray quartz,
30% - 9/16 to 3/16 in. black granite; Pigment: black



388

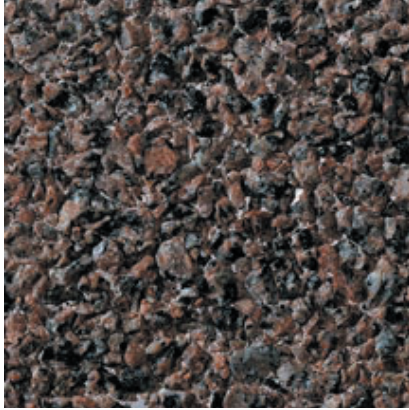
Color: Grey

Concrete Color: White

Texture: Sandblasted

Exposure: Medium

Description: Fine Aggregate: crushed gray quartz;
Coarse Aggregate: 70% - 9/16 to 3/16 in. gray quartz,
30% - 9/16 to 3/16 in. black granite; Pigment: black



389

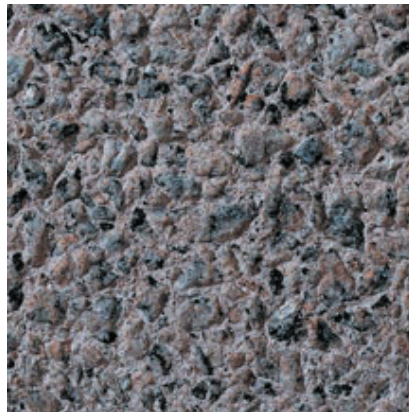
Color: Pink

Concrete Color: White

Texture: Retarded

Exposure: Light

Description: Fine Aggregate: crushed pink granite;
Coarse Aggregate: 1/2 to 1/8 in. pink granite ; Pigment:
red



390

Color: Pink

Concrete Color: White

Texture: Sandblasted

Exposure: Light

Description: Fine Aggregate: crushed pink granite;
Coarse Aggregate: 1/2 to 1/8 in. pink granite ; Pigment:
red



391

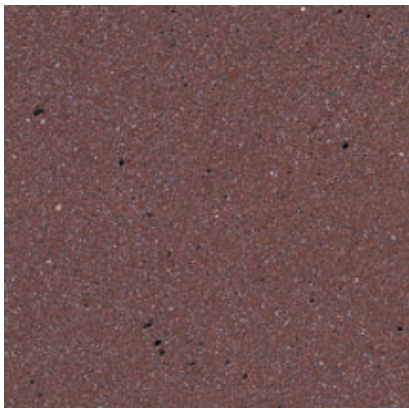
Color: Red

Concrete Color: Gray

Texture: Sandblasted

Exposure: Medium

Description: Fine Aggregate: crushed brown granite;
Coarse Aggregate: 1/2 to 1/4 in. pink granite; Pigment:
reddish orange and red



392

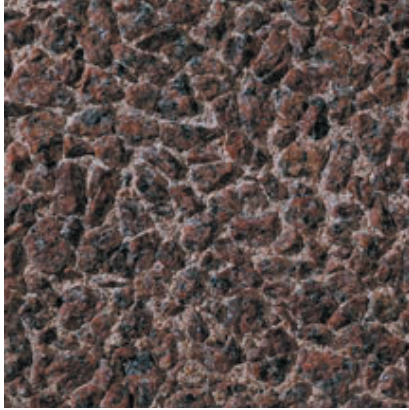
Color: Red

Concrete Color: Gray

Texture: Sandblasted

Exposure: Light

Description: Fine Aggregate: crushed brown granite;
Coarse Aggregate: 1/2 to 1/4 in. pink granite; Pigment:
reddish orange and red



393

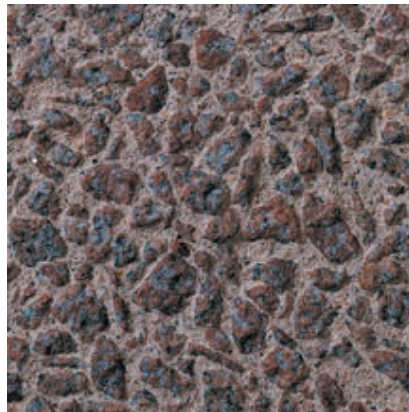
Color: Red

Concrete Color: White

Texture: Retarded

Exposure: Medium

Description: Fine Aggregate: 50% - reddish brown masonry sand, 50% - crushed red granite; Coarse Aggregate: 9/16 to 3/16 in. red granite; Pigment: red



394

Color: Pink

Concrete Color: White

Texture: Sandblasted

Exposure: Medium

Description: Fine Aggregate: 50% - reddish brown masonry sand, 50% - crushed red granite; Coarse Aggregate: 9/16 to 3/16 in. red granite; Pigment: red



395

Color: Pink

Concrete Color: White

Texture: Retarded

Exposure: Medium

Description: Fine Aggregate: crushed gray granite; Coarse Aggregate: 3/8 to 1/8 in. flamingo quartz; Pigment: red



396

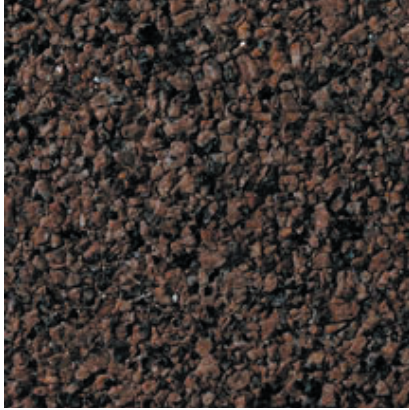
Color: Pink

Concrete Color: White

Texture: Sandblasted

Exposure: Deep

Description: Fine Aggregate: crushed gray granite; Coarse Aggregate: 3/8 to 1/8 in. flamingo quartz; Pigment: red



397

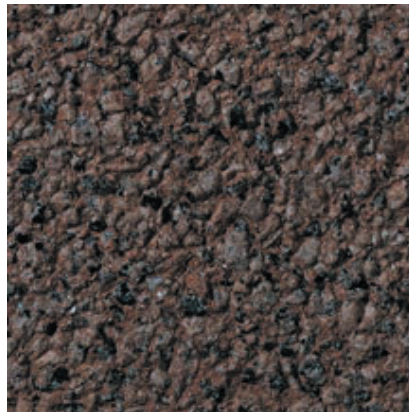
Color: Red

Concrete Color: White

Texture: Retarded

Exposure: Light

Description: Fine Aggregate: crushed orange granite;
Coarse Aggregate: 3/8 to 1/8 in. orange granite;
Pigment: buff



398

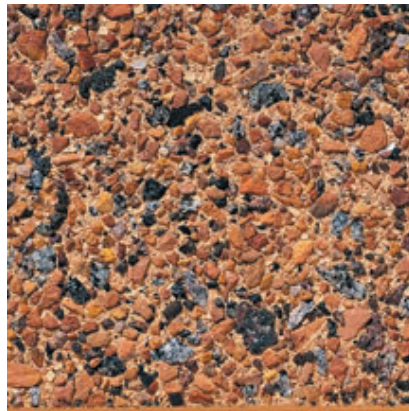
Color: Pink

Concrete Color: White

Texture: Sandblasted

Exposure: Light

Description: Fine Aggregate: crushed orange granite;
Coarse Aggregate: 3/8 to 1/8 in. orange granite;
Pigment: buff



399

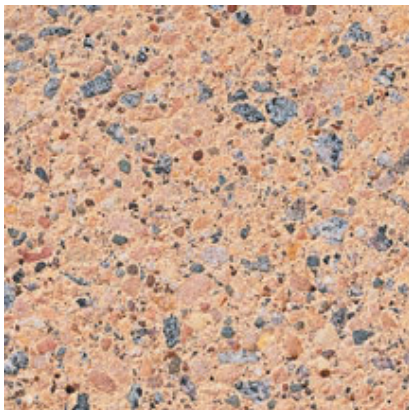
Color: Red

Concrete Color: White

Texture: Retarded

Exposure: Medium

Description: Fine Aggregate: buff concrete sand;
Coarse Aggregate: 68% - 1/2 to 1/4 in. reddish brown limestone, 32% - 1/2 to 1/4 in. black granite; Pigment: reddish orange



400

Color: Buff/Tan

Concrete Color: White

Texture: Sandblasted

Exposure: Medium

Description: Fine Aggregate: buff concrete sand;
Coarse Aggregate: 68% - 1/2 to 1/4 in. reddish brown limestone, 32% - 1/2 to 1/4 in. black granite; Pigment: reddish orange



401

Color: Red

Concrete Color: White

Texture: Retarded

Exposure: Deep

Description: Fine Aggregate: crushed gray granite;
Coarse Aggregate: 75% - 5/8 to 9/32 in. pink feldspar,
25% - 5/8 to 9/32 in. gray granite; Pigment: red



402

Color: Red

Concrete Color: White

Texture: Acid Etched

Exposure: Deep

Description: Fine Aggregate: crushed gray granite;
Coarse Aggregate: 75% - 5/8 to 9/32 in. pink feldspar,
25% - 5/8 to 9/32 in. gray granite; Pigment: red



403

Color: Pink

Concrete Color: Gray

Texture: Retarded

Exposure: Medium

Description: Fine Aggregate: reddish brown masonry
sand; Coarse Aggregate: 80% - 1/2 to 1/4 in. gray
granite, 20% - 5/8 to 9/32 in. red quartzite; Pigment: red



404

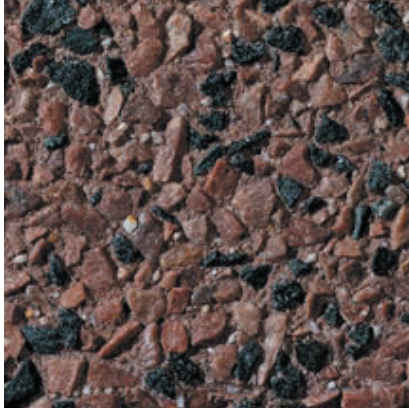
Color: Pink

Concrete Color: Gray

Texture: Sandblasted

Exposure: Medium

Description: Fine Aggregate: reddish brown masonry
sand; Coarse Aggregate: 80% - 1/2 to 1/4 in. gray
granite, 20% - 5/8 to 9/32 in. red quartzite; Pigment: red



405

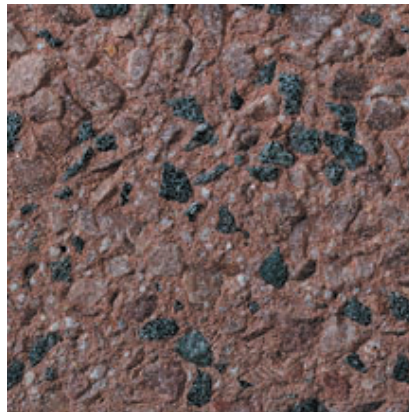
Color: Pink

Concrete Color: 50% - White; 50% - Gray

Texture: Retarded

Exposure: Medium

Description: Fine Aggregate: White silica concrete sand; Coarse Aggregate: 80% - 1/2 to 1/4 in. pink quartzite, 20% - 1/2 to 1/4 in. black granite; Pigment: 50% red; 50% brown



406

Color: Pink

Concrete Color: 50% - White; 50% - Gray

Texture: Sandblasted

Exposure: Medium

Description: Fine Aggregate: White silica concrete sand; Coarse Aggregate: 80% - 1/2 to 1/4 in. pink quartzite, 20% - 1/2 to 1/4 in. black granite; Pigment: 50% red; 50% brown



407

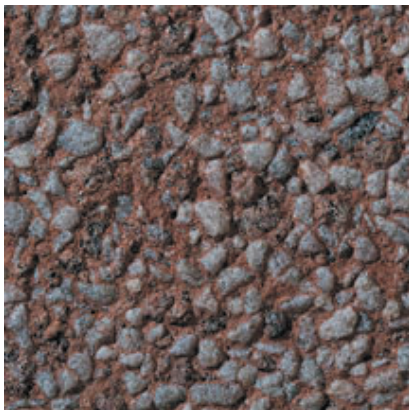
Color: Red - Grey

Concrete Color: Gray

Texture: Retarded

Exposure: Light

Description: Fine Aggregate: crushed red granite; Coarse Aggregate: 75% - 3/8 to 1/8 in. flamingo quartz, 25% - 5/8 to 9/32 in. red granite; Pigment: red



408

Color: Red - Grey

Concrete Color: Gray

Texture: Sandblasted

Exposure: Medium

Description: Fine Aggregate: crushed red granite; Coarse Aggregate: 75% - 3/8 to 1/8 in. flamingo quartz, 25% - 5/8 to 9/32 in. red granite; Pigment: red



409

Color: Red

Concrete Color: White

Texture: Retarded

Exposure: Medium

Description: Fine Aggregate: crushed White marble;
Coarse Aggregate: 65% - 5/8 to 9/32 in. pink feldspar,
35% - 5/8 to 9/32 in. red granite; Pigment: red



410

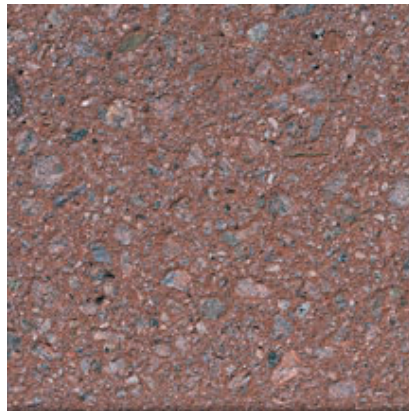
Color: Red

Concrete Color: White

Texture: Sandblasted

Exposure: Light

Description: Fine Aggregate: crushed White marble;
Coarse Aggregate: 65% - 5/8 to 9/32 in. pink feldspar,
35% - 5/8 to 9/32 in. red granite; Pigment: red



411

Color: Red

Concrete Color: Gray

Texture: Sandblasted

Exposure: Light

Description: Fine Aggregate: crushed pink granite;
Coarse Aggregate: 1/2 to 1/4 in. pink granite; Pigment:
reddish orange



412

Color: Red

Concrete Color: Gray

Texture: Acid Etched

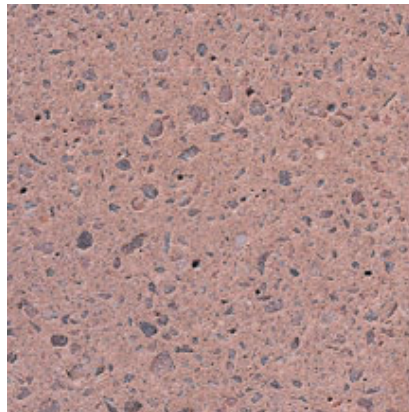
Exposure: Light

Description: Fine Aggregate: crushed pink granite;
Coarse Aggregate: 1/2 to 1/4 in. pink granite; Pigment:
reddish orange



413

Color: Pink
Concrete Color: Antique White
Texture: Retarded
Exposure: Light
Description: Fine Aggregate: crushed pink quartzite;
Coarse Aggregate: 3/8 to 1/4 in. pink quartzite; Pigment:
red



414

Color: Pink
Concrete Color: Antique White
Texture: Sandblasted
Exposure: Medium
Description: Fine Aggregate: crushed pink quartzite;
Coarse Aggregate: 3/8 to 1/4 in. pink quartzite; Pigment:
red



415

Color: Red
Concrete Color: White
Texture: Retarded
Exposure: Medium
Description: Fine Aggregate: crushed gray granite;
Coarse Aggregate: 9/32 to 1/8 in. red quartzite;
Pigment: red



416

Color: Red
Concrete Color: White
Texture: Sandblasted
Exposure: Light
Description: Fine Aggregate: crushed gray granite;
Coarse Aggregate: 9/32 to 1/8 in. red quartzite;
Pigment: red



417

Color: Red

Concrete Color: White

Texture: Retarded

Exposure: Medium

Description: Fine Aggregate: crushed orange granite;
Coarse Aggregate: 80% - 9/16 to 3/16 in. black granite,
20% - 9/16 to 3/16 in. black granite; Pigment: red



418

Color: Pink

Concrete Color: White

Texture: Sandblasted

Exposure: Medium

Description: Fine Aggregate: crushed orange granite;
Coarse Aggregate: 80% - 9/16 to 3/16 in. black granite,
20% - 9/16 to 3/16 in. black granite; Pigment: red



419

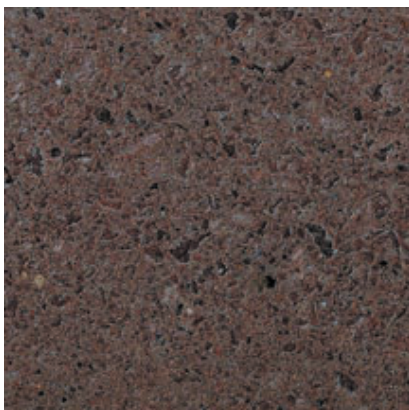
Color: Red

Concrete Color: White

Texture: Retarded

Exposure: Medium

Description: Fine Aggregate: crushed red quartzite;
Coarse Aggregate: 5/8 to 9/32 in. red quartzite; Pigment:
black



420

Color: Red

Concrete Color: White

Texture: Sandblasted

Exposure: Light

Description: Fine Aggregate: crushed red quartzite;
Coarse Aggregate: 5/8 to 9/32 in. red quartzite; Pigment:
black



421

Color: Red

Concrete Color: Gray

Texture: Retarded

Exposure: Medium

Description: Fine Aggregate: crushed red quartzite;
Coarse Aggregate: 70% - 5/8 to 9/32 in. red quartzite,
30% - 5/8 to 9/32 in. black granite



422

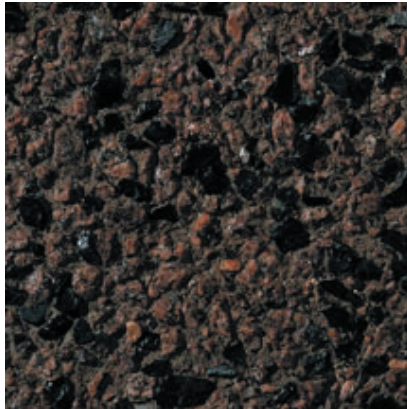
Color: Red

Concrete Color: Gray

Texture: Sandblasted

Exposure: Medium

Description: Fine Aggregate: crushed red quartzite;
Coarse Aggregate: 70% - 5/8 to 9/32 in. red quartzite,
30% - 5/8 to 9/32 in. black granite



423

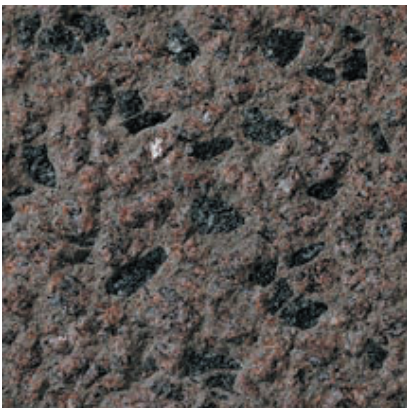
Color: Red - Black

Concrete Color: Gray

Texture: Retarded

Exposure: Medium

Description: Fine Aggregate: crushed red granite;
Coarse Aggregate: 80% - 5/8 to 9/32 in. red granite,
20% - 5/8 to 9/32 in. black granite



424A

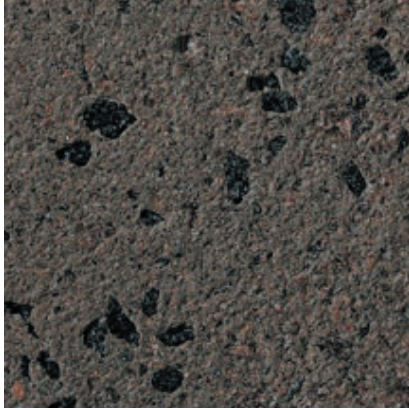
Color: Pink - Black

Concrete Color: Gray

Texture: Sandblasted

Exposure: Medium

Description: Fine Aggregate: crushed red granite;
Coarse Aggregate: 80% - 5/8 to 9/32 in. red granite,
20% - 5/8 to 9/32 in. black granite



424B

Color: Pink - Black

Concrete Color: Gray

Texture: Sandblasted

Exposure: Light

Description: Fine Aggregate: crushed red granite;
Coarse Aggregate: 80% - 5/8 to 9/32 in. red granite,
20% - 5/8 to 9/32 in. black granite



425

Color: Red - Black

Concrete Color: Gray

Texture: Retarded

Exposure: Light

Description: Fine Aggregate: crushed red granite;
Coarse Aggregate: 80% - 9/32 to 1/8 in. red granite,
20% - 9/32 to 1/8 in. black granite



426

Color: Red

Concrete Color: Gray

Texture: Sandblasted

Exposure: Light

Description: Fine Aggregate: crushed red granite;
Coarse Aggregate: 80% - 9/32 to 1/8 in. red granite,
20% - 9/32 to 1/8 in. black granite



427

Color: Pink - Grey

Concrete Color: White

Texture: Retarded

Exposure: Medium

Description: Fine Aggregate: reddish brown concrete
sand; Coarse Aggregate: 60% - 5/8 to 9/32 in. red
quartzite, 40% - 5/8 to 9/32 in. gray granite; Pigment:
black



428

Color: Grey

Concrete Color: White

Texture: Sandblasted

Exposure: Light

Description: Fine Aggregate: reddish brown concrete sand; Coarse Aggregate: 60% - 5/8 to 9/32 in. red quartzite, 40% - 5/8 to 9/32 in. gray granite; Pigment: black



429

Color: Pink

Concrete Color: White

Texture: Retarded

Exposure: Light

Description: Fine Aggregate: crushed White marble; Coarse Aggregate: 9/32 to 1/8 in. pink feldspar



430

Color: Pink

Concrete Color: White

Texture: Acid Etched

Exposure: Light

Description: Fine Aggregate: crushed White marble; Coarse Aggregate: 9/32 to 1/8 in. pink feldspar



431

Color: Red

Concrete Color: Gray

Texture: Retarded

Exposure: Medium

Description: Fine Aggregate: reddish brown concrete sand; Coarse Aggregate: 50% - 3/8 to 1/8 in. pink quartz, 50% - 3/8 to 1/8 in. red granite



432

Color: Red

Concrete Color: Gray

Texture: Sandblasted

Exposure: Medium

Description: Fine Aggregate: reddish brown concrete sand; Coarse Aggregate: 50% - 3/8 to 1/8 in. pink quartz, 50% - 3/8 to 1/8 in. red granite



433

Color: Red

Concrete Color: White

Texture: Retarded

Exposure: Medium

Description: Fine Aggregate: crushed gray granite; Coarse Aggregate: 75% - 5/8 to 9/32 in. red granite, 25% - 5/8 to 9/32 in. light red granite; Pigment: black



434

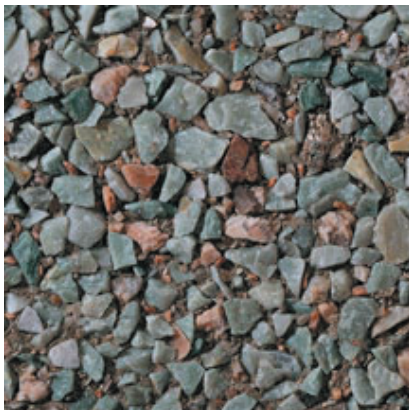
Color: Grey

Concrete Color: White

Texture: Sandblasted

Exposure: Light

Description: Fine Aggregate: crushed gray granite; Coarse Aggregate: 75% - 5/8 to 9/32 in. red granite, 25% - 5/8 to 9/32 in. light red granite; Pigment: black



435

Color: Green

Concrete Color: Gray

Texture: Retarded

Exposure: Medium

Description: Fine Aggregate: crushed pink feldspar; Coarse Aggregate: 90% - 5/8 to 9/32 in. green quartzite, 10% - 5/8 to 9/32 in. pink feldspar; Pigment: green



436

Color: Green

Concrete Color: Gray

Texture: Sandblasted

Exposure: Medium

Description: Fine Aggregate: crushed pink feldspar;
Coarse Aggregate: 90% - 5/8 to 9/32 in. green quartzite,
10% - 5/8 to 9/32 in. pink feldspar; Pigment: green



437

Color: Green - Grey

Concrete Color: Gray

Texture: Retarded

Exposure: Medium

Description: Fine Aggregate: crushed gray granite;
Coarse Aggregate: 50% - 5/8 to 9/32 in. green quartzite,
50% - 5/8 to 9/32 in. gray granite; Pigment: red



438

Color: Green - Grey

Concrete Color: Gray

Texture: Sandblasted

Exposure: Medium

Description: Fine Aggregate: crushed gray granite;
Coarse Aggregate: 50% - 5/8 to 9/32 in. green quartzite,
50% - 5/8 to 9/32 in. gray granite; Pigment: red



439

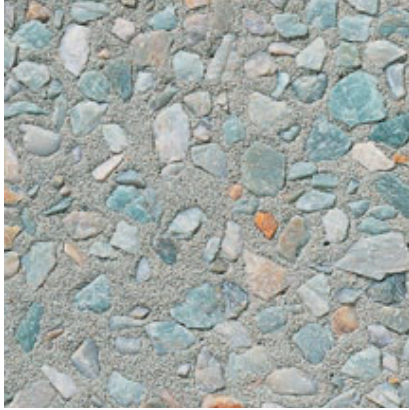
Color: Green

Concrete Color: White

Texture: Retarded

Exposure: Medium

Description: Fine Aggregate: silica sand; Coarse
Aggregate: 1/2 to 1/4 in. green quartzite; Pigment:
green



440

Color: Green

Concrete Color: White

Texture: Sandblasted

Exposure: Medium

Description: Fine Aggregate: silica sand; Coarse Aggregate: 1/2 to 1/4 in. green quartzite; Pigment: green



441

Color: Green

Concrete Color: Gray

Texture: Retarded

Exposure: Deep

Description: Fine Aggregate: crushed gray granite; Coarse Aggregate: 1/2 to 1/4 in. green marble



442

Color: Green

Concrete Color: Gray

Texture: Sandblasted

Exposure: Deep

Description: Fine Aggregate: crushed gray granite; Coarse Aggregate: 1/2 to 1/4 in. green marble



443

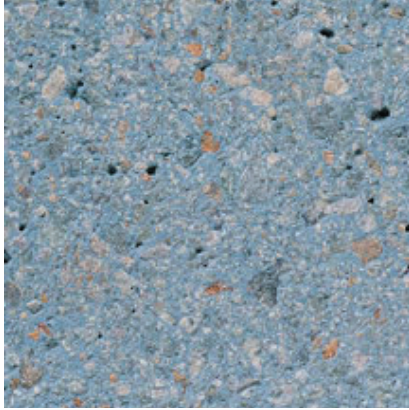
Color: Blue - Green

Concrete Color: White

Texture: Retarded

Exposure: Medium

Description: Fine Aggregate: crushed green quartzite; Coarse Aggregate: 9/16 to 3/16 in. green quartzite; Pigment: blue



444

Color: Blue

Concrete Color: White

Texture: Sandblasted

Exposure: Medium

Description: Fine Aggregate: crushed green quartzite;
Coarse Aggregate: 9/16 to 3/16 in. green quartzite;
Pigment: blue



445

Color: Green

Concrete Color: Gray

Texture: Retarded

Exposure: Light

Description: Fine Aggregate: crushed green marble;
Coarse Aggregate: 1/2 to 1/8 in. green marble



446

Color: Green

Concrete Color: Gray

Texture: Sandblasted

Exposure: Medium

Description: Fine Aggregate: crushed green marble;
Coarse Aggregate: 1/2 to 1/8 in. green marble



447

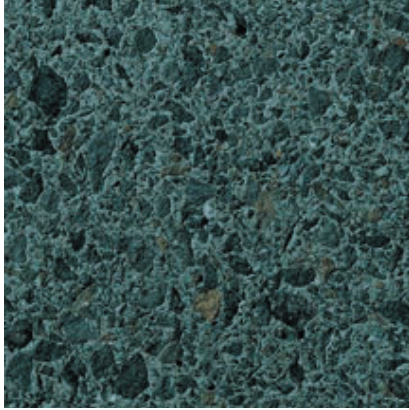
Color: Green

Concrete Color: White

Texture: Retarded

Exposure: Medium

Description: Fine Aggregate: crushed green marble;
Coarse Aggregate: 1/2 to 1/4 in. green marble; Pigment: green



448

Color: Green

Concrete Color: White

Texture: Acid Etched

Exposure: Light

Description: Fine Aggregate: crushed green marble;
Coarse Aggregate: 1/2 to 1/4 in. green marble; Pigment:
green



449

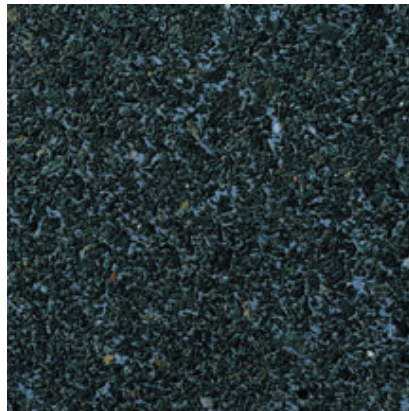
Color: Green

Concrete Color: White

Texture: Retarded

Exposure: Light

Description: Fine Aggregate: crushed green marble;
Coarse Aggregate: 1/2 to 1/4 in. green marble; Pigment:
blue



450

Color: Green

Concrete Color: White

Texture: Acid Etched

Exposure: Light

Description: Fine Aggregate: crushed green marble;
Coarse Aggregate: 1/2 to 1/4 in. green marble; Pigment:
blue



451

Color: Pink

Concrete Color: White

Texture: Retarded

Exposure: Medium

Description: Fine Aggregate: crushed gray granite;
Coarse Aggregate: 60% - 5/8 to 9/32 in. gray granite,
40% - 5/8 to 9/32 in. pink feldspar; Pigment: black



452

Color: Grey

Concrete Color: White

Texture: Sandblasted

Exposure: Light

Description: Fine Aggregate: crushed gray granite;
Coarse Aggregate: 60% - 5/8 to 9/32 in. gray granite,
40% - 5/8 to 9/32 in. pink feldspar; Pigment: black



453

Color: Red

Concrete Color: Gray

Texture: Retarded

Exposure: Medium

Description: Fine Aggregate: crushed gray granite;
Coarse Aggregate: 3/8 to 1/8 in. red marble



454

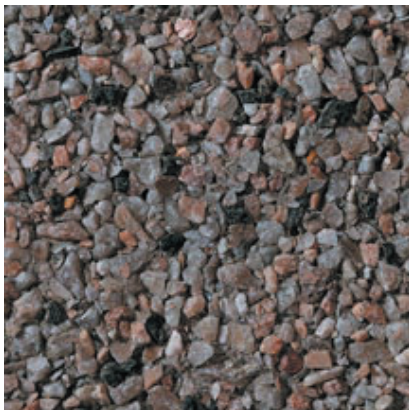
Color: Red

Concrete Color: Gray

Texture: Sandblasted

Exposure: Light

Description: Fine Aggregate: crushed gray granite;
Coarse Aggregate: 3/8 to 1/8 in. red marble



455

Color: Pink

Concrete Color: Gray

Texture: Retarded

Exposure: Light

Description: Fine Aggregate: crushed red quartzite;
Coarse Aggregate: 60% - 3/8 to 1/8 in. pink feldspar,
30% - 3/8 to 1/8 in. black granite, 10% - 3/8 to 1/8 in.
red quartzite



456

Color: Pink

Concrete Color: Gray

Texture: Sandblasted

Exposure: Light

Description: Fine Aggregate: crushed red quartzite; Coarse Aggregate: 60% - 3/8 to 1/8 in. pink feldspar, 30% - 3/8 to 1/8 in. black granite, 10% - 3/8 to 1/8 in. red quartzite



457

Color: Pink

Concrete Color: White

Texture: Retarded

Exposure: Deep

Description: Fine Aggregate: crushed pinkish gray granite; Coarse Aggregate: 1/2 to 1/4 in. gray granite



458

Color: Grey

Concrete Color: White

Texture: Sandblasted

Exposure: Deep

Description: Fine Aggregate: crushed pinkish gray granite; Coarse Aggregate: 1/2 to 1/4 in. gray granite



459

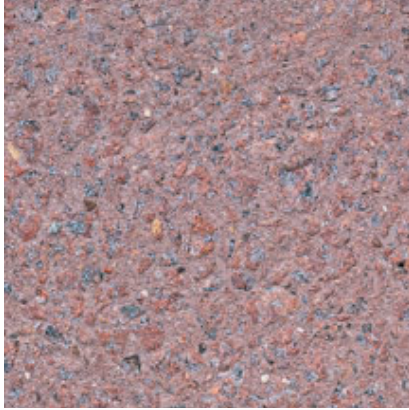
Color: Red

Concrete Color: Gray

Texture: Retarded

Exposure: Medium

Description: Fine Aggregate: 80% - buff masonry sand, 20% - crushed red granite; Coarse Aggregate: 9/16 to 3/16 in. red granite; Pigment: red



460

Color: Pink

Concrete Color: Gray

Texture: Sandblasted

Exposure: Medium

Description: Fine Aggregate: 80% - buff masonry sand, 20% - crushed red granite; Coarse Aggregate: 9/16 to 3/16 in. red granite; Pigment: red



461

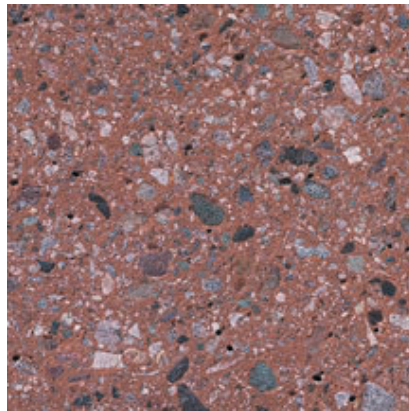
Color: Red

Concrete Color: 50% - White; 50% - Gray

Texture: Retarded

Exposure: Medium

Description: Fine Aggregate: crushed mahogany marble; Coarse Aggregate: 9/16 to 3/16 in. mahogany marble; Pigment: red



462

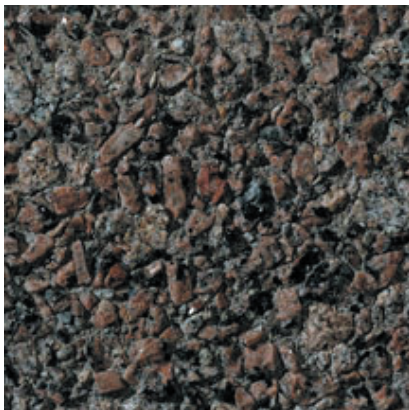
Color: Red

Concrete Color: 50% - White; 50% - Gray

Texture: Sandblasted

Exposure: Medium

Description: Fine Aggregate: crushed mahogany marble; Coarse Aggregate: 9/16 to 3/16 in. mahogany marble; Pigment: red



463

Color: Pink

Concrete Color: 50% - White; 50% - Gray

Texture: Retarded

Exposure: Medium

Description: Fine Aggregate: crushed gray granite; Coarse Aggregate: 75% - 1/2 to 1/4 in. pink granite, 25% - 5/8 to 9/32 in. gray granite



464

Color: Grey

Concrete Color: 50% - White; 50% - Gray

Texture: Sandblasted

Exposure: Medium

Description: Fine Aggregate: crushed gray granite;
Coarse Aggregate: 75% - 1/2 to 1/4 in. pink granite, 25%
- 5/8 to 9/32 in. gray granite



465

Color: Red

Concrete Color: White

Texture: Retarded

Exposure: Medium

Description: Fine Aggregate: crushed gray granite;
Coarse Aggregate: 75% - 5/8 to 9/32 in. red granite,
25% - 5/8 to 9/32 in. gray granite; Pigment: black



466

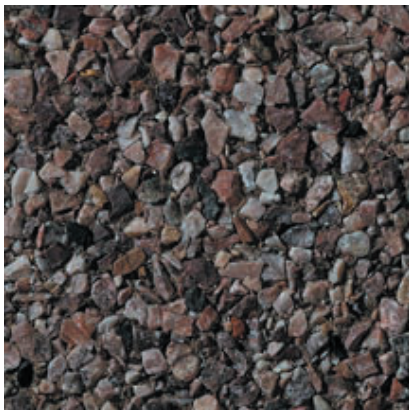
Color: Grey

Concrete Color: White

Texture: Sandblasted

Exposure: Light

Description: Fine Aggregate: crushed gray granite;
Coarse Aggregate: 75% - 5/8 to 9/32 in. red granite,
25% - 5/8 to 9/32 in. gray granite; Pigment: black



467

Color: Pink

Concrete Color: Gray

Texture: Retarded

Exposure: Medium

Description: Fine Aggregate: crushed pink marble;
Coarse Aggregate: 3/8 to 1/8 in. pink marble; Pigment:
red



468

Color: Grey

Concrete Color: Gray

Texture: Sandblasted

Exposure: Medium

Description: Fine Aggregate: crushed pink marble;
Coarse Aggregate: 3/8 to 1/8 in. pink marble; Pigment:
red



469

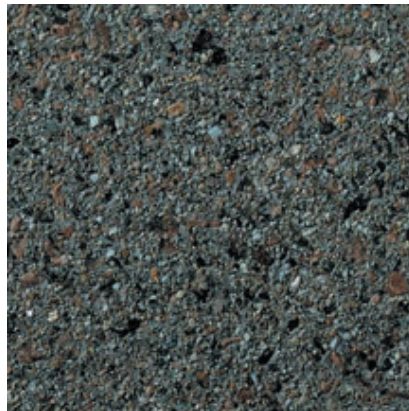
Color: Pink

Concrete Color: White

Texture: Retarded

Exposure: Medium

Description: Fine Aggregate: crushed gray granite;
Coarse Aggregate: 1/2 to 1/4 in. pink granite; Pigment:
black



470

Color: Grey

Concrete Color: White

Texture: Acid Etched

Exposure: Medium

Description: Fine Aggregate: crushed gray granite;
Coarse Aggregate: 1/2 to 1/4 in. pink granite; Pigment:
black



471

Color: Pink

Concrete Color: Gray

Texture: Retarded

Exposure: Medium

Description: Fine Aggregate: crushed gray granite;
Coarse Aggregate: 3/8 to 1/8 in. red granite



472

Color: Grey

Concrete Color: Gray

Texture: Sandblasted

Exposure: Light

Description: Fine Aggregate: crushed gray granite;
Coarse Aggregate: 3/8 to 1/8 in. red granite



473

Color: Pink

Concrete Color: Gray

Texture: Retarded

Exposure: Deep

Description: Fine Aggregate: crushed pink marble;
Coarse Aggregate: 1/2 to 1/8 in. pink marble; Pigment:
red



474

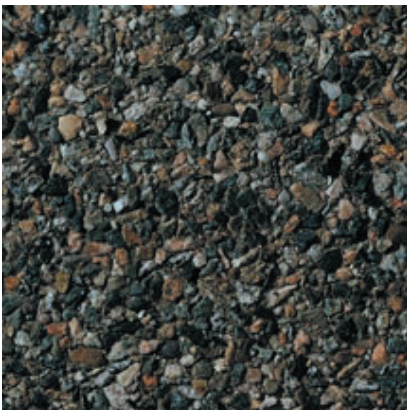
Color: Pink

Concrete Color: Gray

Texture: Sandblasted

Exposure: Deep

Description: Fine Aggregate: crushed pink marble;
Coarse Aggregate: 1/2 to 1/8 in. pink marble; Pigment:
red



475

Color: Grey

Concrete Color: Gray

Texture: Retarded

Exposure: Medium

Description: Fine Aggregate: crushed gray granite;
Coarse Aggregate: 9/32 to 1/8 in. gray granite



476

Color: Grey

Concrete Color: Gray

Texture: Acid Etched

Exposure: Medium

Description: Fine Aggregate: crushed gray granite;
Coarse Aggregate: 9/32 to 1/8 in. gray granite



477

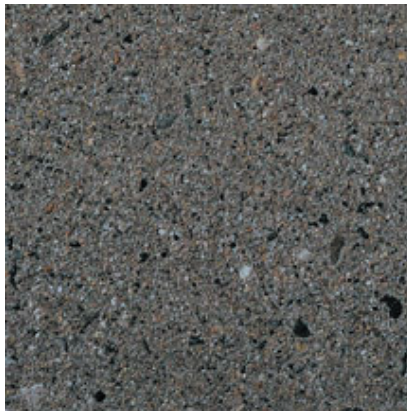
Color: Grey

Concrete Color: Gray

Texture: Retarded

Exposure: Medium

Description: Fine Aggregate: crushed gray granite;
Coarse Aggregate: 1/2 to 1/4 in. gray granite



478

Color: Grey

Concrete Color: Gray

Texture: Acid Etched

Exposure: Light

Description: Fine Aggregate: crushed gray granite;
Coarse Aggregate: 1/2 to 1/4 in. gray granite



479

Color: Pink - Grey

Concrete Color: Gray

Texture: Retarded

Exposure: Medium

Description: Fine Aggregate: crushed gray granite;
Coarse Aggregate: 80% - 3/8 to 1/8 in. gray granite,
20% - 3/8 to 1/8 in. pink quartzite; Pigment: red



480

Color: Pink - Grey

Concrete Color: Gray

Texture: Sandblasted

Exposure: Medium

Description: Fine Aggregate: crushed gray granite;
Coarse Aggregate: 80% - 3/8 to 1/8 in. gray granite,
20% - 3/8 to 1/8 in. pink quartzite; Pigment: red



481

Color: Pink

Concrete Color: Gray

Texture: Retarded

Exposure: Medium

Description: Fine Aggregate: crushed purple quartz;
Coarse Aggregate: 3/8 to 1/8 in. purple quartz



482

Color: Pink

Concrete Color: Gray

Texture: Sandblasted

Exposure: Light

Description: Fine Aggregate: crushed purple quartz;
Coarse Aggregate: 3/8 to 1/8 in. purple quartz



483

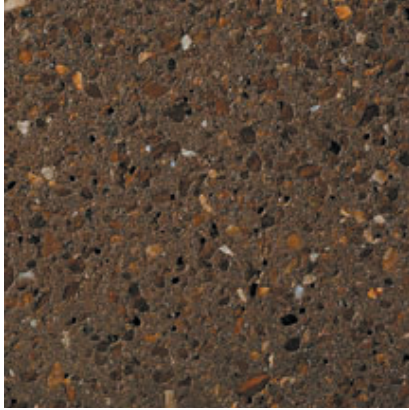
Color: Brown

Concrete Color: Gray

Texture: Retarded

Exposure: Medium

Description: Fine Aggregate: brown river sand; Coarse
Aggregate: 3/8 to 1/8 in. brown river gravel; Pigment:
brown



484

Color: Brown

Concrete Color: Gray

Texture: Sandblasted

Exposure: Medium

Description: Fine Aggregate: brown river sand; Coarse Aggregate: 3/8 to 1/8 in. brown river gravel; Pigment: brown



485

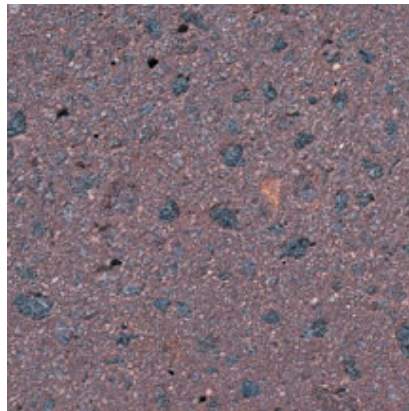
Color: Red

Concrete Color: Gray

Texture: Retarded

Exposure: Medium

Description: Fine Aggregate: crushed mauve granite; Coarse Aggregate: 80% - 9/16 to 3/16 in. mauve granite, 20% - 9/16 to 3/16 in. black granite; Pigment: red



486

Color: Pink

Concrete Color: Gray

Texture: Sandblasted

Exposure: Medium

Description: Fine Aggregate: crushed mauve granite; Coarse Aggregate: 80% - 9/16 to 3/16 in. mauve granite, 20% - 9/16 to 3/16 in. black granite; Pigment: red



487

Color: Brown

Concrete Color: Gray

Texture: Retarded

Exposure: Deep

Description: Fine Aggregate: brown river sand; Coarse Aggregate: 5/8 to 1/4 in. brown river gravel; Pigment: brown



488

Color: Buff/Tan

Concrete Color: Gray

Texture: Sandblasted

Exposure: Medium

Description: Fine Aggregate: brown river sand; Coarse Aggregate: 5/8 to 1/4 in. brown river gravel; Pigment: brown



489

Color: Brown

Concrete Color: White

Texture: Retarded

Exposure: Medium

Description: Fine Aggregate: reddish brown masonry sand; Coarse Aggregate: 1/2 to 1/4 in. brown river gravel; Pigment: brown



490

Color: Brown

Concrete Color: White

Texture: Sandblasted

Exposure: Medium

Description: Fine Aggregate: reddish brown masonry sand; Coarse Aggregate: 1/2 to 1/4 in. brown river gravel; Pigment: brown



491

Color: Brown

Concrete Color: Gray

Texture: Retarded

Exposure: Medium

Description: Fine Aggregate: buff masonry sand; Coarse Aggregate: 1/2 to 1/4 in. reddish brown, limestone; Pigment: dark brown



492

Color: Grey

Concrete Color: Gray

Texture: Sandblasted

Exposure: Medium

Description: Fine Aggregate: buff masonry sand;
Coarse Aggregate: 1/2 to 1/4 in. reddish brown,
limestone; Pigment: dark brown



493

Color: Brown

Concrete Color: Gray

Texture: Retarded

Exposure: Light

Description: Fine Aggregate: reddish brown concrete
sand; Coarse Aggregate: 3/8 to 1/8 in. reddish brown,
river gravel; Pigment: buff



494

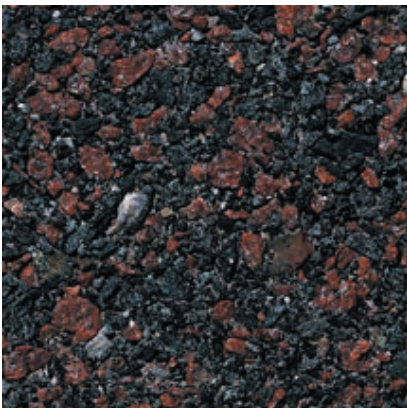
Color: Brown

Concrete Color: Gray

Texture: Acid Etched

Exposure: Light

Description: Fine Aggregate: reddish brown concrete
sand; Coarse Aggregate: 3/8 to 1/8 in. reddish brown,
river gravel; Pigment: buff



495

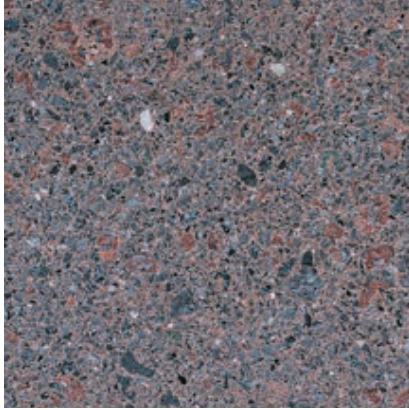
Color: Red - Black

Concrete Color: Gray

Texture: Retarded

Exposure: Light

Description: Fine Aggregate: 70% - crushed black
granite, 30% - black granite grit; Coarse Aggregate:
70% - 1/2 to 1/4 in. red granite, 30% - 1/2 to 1/4 in.
black granite; Pigment: red



496

Color: Pink - Grey

Concrete Color: Gray

Texture: Sandblasted

Exposure: Light

Description: Fine Aggregate: 70% - crushed black granite, 30% - black granite grit; Coarse Aggregate: 70% - 1/2 to 1/4 in. red granite, 30% - 1/2 to 1/4 in. black granite; Pigment: red



497

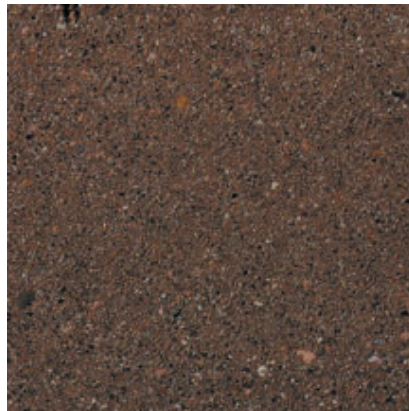
Color: Brown

Concrete Color: Gray

Texture: Retarded

Exposure: Medium

Description: Fine Aggregate: reddish brown concrete sand; Coarse Aggregate: 3/8 to 1/8 in. reddish brown river gravel; Pigment: brown



498

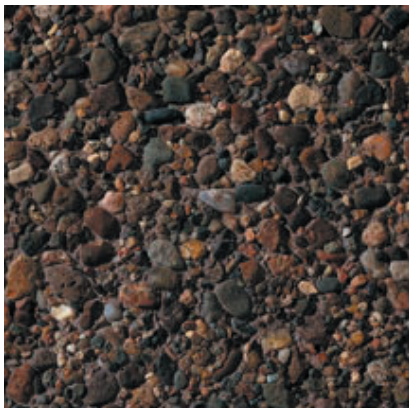
Color: Brown

Concrete Color: Gray

Texture: Acid Etched

Exposure: Light

Description: Fine Aggregate: reddish brown concrete sand; Coarse Aggregate: 3/8 to 1/8 in. reddish brown river gravel; Pigment: brown



499

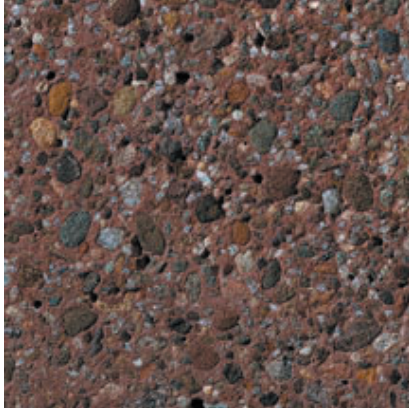
Color: Brown

Concrete Color: Gray

Texture: Retarded

Exposure: Medium

Description: Fine Aggregate: red/black river sand; Coarse Aggregate: 3/8 to 1/8 in. red/black river gravel; Pigment: red



500

Color: Brown

Concrete Color: Gray

Texture: Sandblasted

Exposure: Medium

Description: Fine Aggregate: red/black river sand;
Coarse Aggregate: 3/8 to 1/8 in. red/black river gravel;
Pigment: red



501

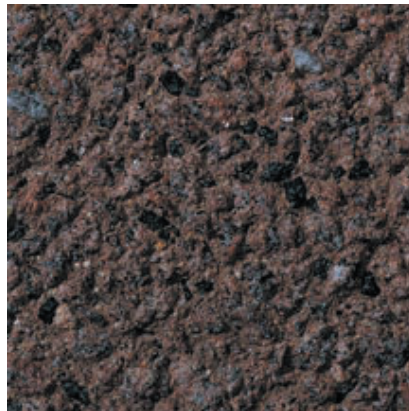
Color: Red

Concrete Color: Gray

Texture: Retarded

Exposure: Medium

Description: Fine Aggregate: reddish brown masonry
sand; Coarse Aggregate: 80% - 5/8 to 9/32 in. red
granite, 20% - 9/32 to 1/8 in. black granite; Pigment: red



502

Color: Red

Concrete Color: Gray

Texture: Sandblasted

Exposure: Medium

Description: Fine Aggregate: reddish brown masonry
sand; Coarse Aggregate: 80% - 5/8 to 9/32 in. red
granite, 20% - 9/32 to 1/8 in. black granite; Pigment: red



503

Color: Red

Concrete Color: Gray

Texture: Retarded

Exposure: Deep

Description: Fine Aggregate: crushed red granite;
Coarse Aggregate: 1/2 to 1/4 in. red granite; Pigment:
red



504

Color: Red

Concrete Color: Gray

Texture: Sandblasted

Exposure: Medium

Description: Fine Aggregate: crushed red granite;
Coarse Aggregate: 1/2 to 1/4 in. red granite; Pigment:
red



505

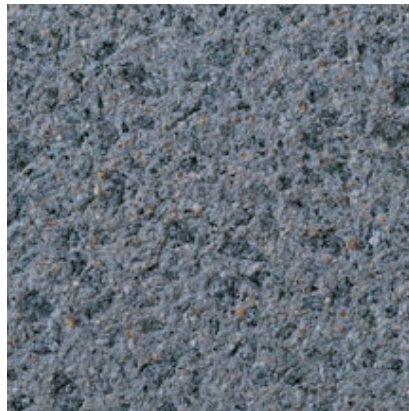
Color: Grey

Concrete Color: White

Texture: Retarded

Exposure: Medium

Description: Fine Aggregate: crushed gray granite;
Coarse Aggregate: 9/16 to 3/16 in. gray granite;
Pigment: black



506

Color: Grey

Concrete Color: White

Texture: Sandblasted

Exposure: Medium

Description: Fine Aggregate: crushed gray granite;
Coarse Aggregate: 9/16 to 3/16 in. gray granite;
Pigment: black



507

Color: Grey

Concrete Color: Gray

Texture: Retarded

Exposure: Light

Description: Fine Aggregate: crushed gray granite;
Coarse Aggregate: 3/8 to 1/4 in. gray granite



508

Color: Grey

Concrete Color: Gray

Texture: Sandblasted

Exposure: Medium

Description: Fine Aggregate: crushed gray granite;
Coarse Aggregate: 3/8 to 1/4 in. gray granite



509

Color: Grey

Concrete Color: White

Texture: Retarded

Exposure: Medium

Description: Fine Aggregate: crushed gray granite;
Coarse Aggregate: 3/8 to 1/8 in. gray granite; Pigment:
yellow



510

Color: Grey

Concrete Color: White

Texture: Sandblasted

Exposure: Medium

Description: Fine Aggregate: crushed gray granite;
Coarse Aggregate: 3/8 to 1/8 in. gray granite; Pigment:
yellow



511

Color: Grey

Concrete Color: Gray

Texture: Retarded

Exposure: Light

Description: Fine Aggregate: crushed gray granite;
Coarse Aggregate: 9/32 to 1/8 in. gray granite



512

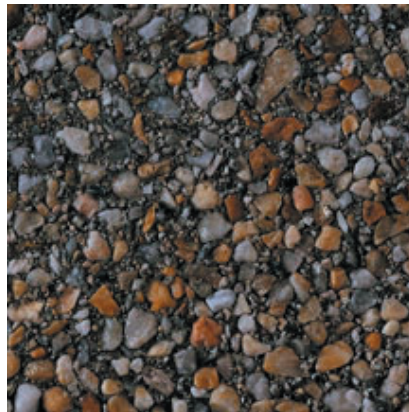
Color: Grey

Concrete Color: Gray

Texture: Acid Etched

Exposure: Light

Description: Fine Aggregate: crushed gray granite;
Coarse Aggregate: 9/32 to 1/8 in. gray granite



513

Color: Brown

Concrete Color: Gray

Texture: Retarded

Exposure: Medium

Description: Fine Aggregate: crushed gray granite;
Coarse Aggregate: 1/2 to 1/4 in. amber quartz



514

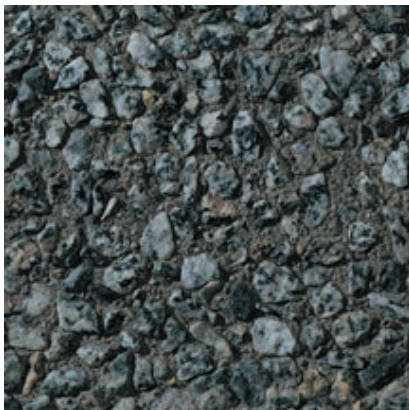
Color: Grey

Concrete Color: Gray

Texture: Sandblasted

Exposure: Medium

Description: Fine Aggregate: crushed gray granite;
Coarse Aggregate: 1/2 to 1/4 in. amber quartz



515

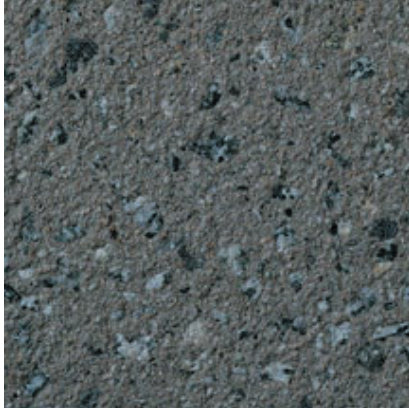
Color: Grey

Concrete Color: Gray

Texture: Retarded

Exposure: Medium

Description: Fine Aggregate: crushed gray granite;
Coarse Aggregate: 1/2 to 3/8 in. gray granite



516

Color: Grey

Concrete Color: Gray

Texture: Sandblasted

Exposure: Light

Description: Fine Aggregate: crushed gray granite;
Coarse Aggregate: 1/2 to 3/8 in. gray granite



517

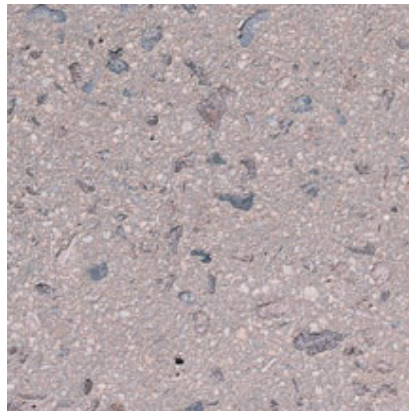
Color: Brown

Concrete Color: 50% - Antique White; 50% - Gray

Texture: Retarded

Exposure: Medium

Description: Fine Aggregate: crushed buff limestone;
Coarse Aggregate: 1/2 to 1/4 in. gray limestone



518

Color: Pink

Concrete Color: 50% - Antique White; 50% - Gray

Texture: Sandblasted

Exposure: Medium

Description: Fine Aggregate: crushed buff limestone;
Coarse Aggregate: 1/2 to 1/4 in. gray limestone



519

Color: Pink

Concrete Color: 50% - White; 50% - Gray

Texture: Retarded

Exposure: Medium

Description: Fine Aggregate: crushed gray granite;
Coarse Aggregate: 50% - 5/8 to 9/32 in. gray granite,
50% - 1/2 to 1/8 in. pink/black granite



520

Color: Grey

Concrete Color: 50% - White; 50% - Gray

Texture: Sandblasted

Exposure: Deep

Description: Fine Aggregate: crushed gray granite;
Coarse Aggregate: 50% - 5/8 to 9/32 in. gray granite,
50% - 1/2 to 1/8 in. pink/black granite



521

Color: Brown

Concrete Color: Gray

Texture: Retarded

Exposure: Medium

Description: Fine Aggregate: 80% - crushed light
purple quartzite, 20% - crushed black granite; Coarse
Aggregate: 3/8 to 1/8 in. light purple quartzite; Pigment:
black



522

Color: Grey

Concrete Color: Gray

Texture: Sandblasted

Exposure: Light

Description: Fine Aggregate: 80% - crushed light
purple quartzite, 20% - crushed black granite; Coarse
Aggregate: 3/8 to 1/8 in. light purple quartzite; Pigment:
black



523

Color: Black

Concrete Color: White

Texture: Retarded

Exposure: Medium

Description: Fine Aggregate: crushed gray traprock;
Coarse Aggregate: 1/2 to 1/4 in. gray traprock; Pigment:
black



524

Color: Black

Concrete Color: White

Texture: Sandblasted

Exposure: Medium

Description: Fine Aggregate: crushed gray traprock;
Coarse Aggregate: 1/2 to 1/4 in. gray traprock; Pigment:
black



525

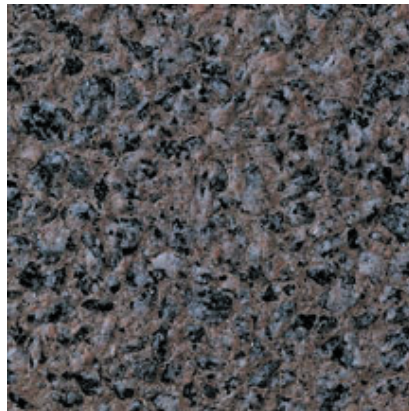
Color: Pink - Black

Concrete Color: White

Texture: Retarded

Exposure: Deep

Description: Fine Aggregate: crushed pink/black
granite; Coarse Aggregate: 1/2 to 1/4 in. pink/black
granite; Pigment: brown



526

Color: Pink - Black

Concrete Color: White

Texture: Sandblasted

Exposure: Deep

Description: Fine Aggregate: crushed pink/black
granite; Coarse Aggregate: 1/2 to 1/4 in. pink/black
granite; Pigment: brown



527

Color: Grey

Concrete Color: Gray

Texture: Retarded

Exposure: Light

Description: Fine Aggregate: crushed gray granite;
Coarse Aggregate: 1/2 to 1/4 in. gray granite



528

Color: Grey

Concrete Color: Gray

Texture: Sandblasted

Exposure: Medium

Description: Fine Aggregate: crushed gray granite;
Coarse Aggregate: 1/2 to 1/4 in. gray granite



529

Color: Grey

Concrete Color: White

Texture: Sandblasted

Exposure: Medium

Description: Fine Aggregate: White concrete sand;
Coarse Aggregate: 1/2 to 1/4 in. gray granite; Pigment:
black



530

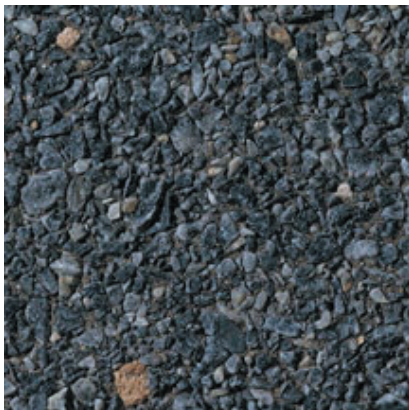
Color: Grey

Concrete Color: White

Texture: Acid Etched

Exposure: Medium

Description: Fine Aggregate: White concrete sand;
Coarse Aggregate: 1/2 to 1/4 in. gray granite; Pigment:
black



531

Color: Grey

Concrete Color: Gray

Texture: Retarded

Exposure: Light

Description: Fine Aggregate: crushed blue marble;
Coarse Aggregate: 1/2 to 1/8 in. blue marble



532

Color: Grey

Concrete Color: Gray

Texture: Sandblasted

Exposure: Light

Description: Fine Aggregate: crushed blue marble;
Coarse Aggregate: 1/2 to 1/8 in. blue marble



533

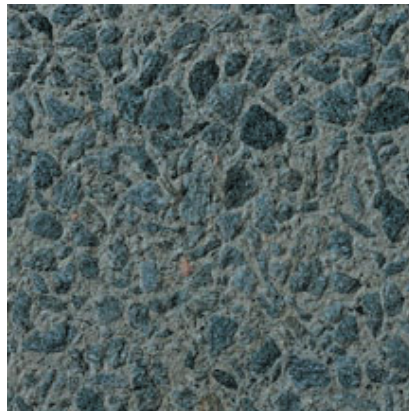
Color: Black

Concrete Color: Gray

Texture: Retarded

Exposure: Medium

Description: Fine Aggregate: crushed black granite;
Coarse Aggregate: 1/2 to 1/4 in. black granite



534

Color: Grey

Concrete Color: Gray

Texture: Sandblasted

Exposure: Light

Description: Fine Aggregate: crushed black granite;
Coarse Aggregate: 1/2 to 1/4 in. black granite



535

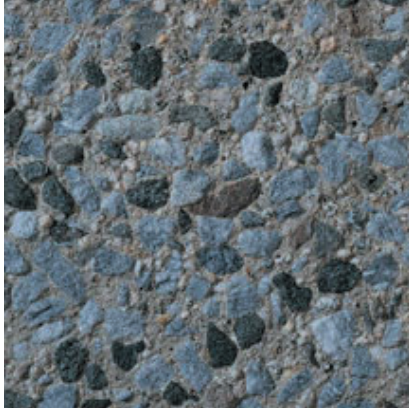
Color: Grey

Concrete Color: Gray

Texture: Retarded

Exposure: Deep

Description: Fine Aggregate: crushed gray granite;
Coarse Aggregate: 1/2 to 3/8 in. gray marble



536

Color: Grey

Concrete Color: Gray

Texture: Sandblasted

Exposure: Deep

Description: Fine Aggregate: crushed gray granite;
Coarse Aggregate: 1/2 to 3/8 in. gray marble



537

Color: Grey

Concrete Color: White

Texture: Retarded

Exposure: Deep

Description: Fine Aggregate: crushed gray granite;
Coarse Aggregate: 3/4 to 1/2 in. gray granite; Pigment:
black



538

Color: Grey

Concrete Color: White

Texture: Acid Etched

Exposure: Deep

Description: Fine Aggregate: crushed gray granite;
Coarse Aggregate: 3/4 to 1/2 in. gray granite; Pigment:
black



539

Color: Black - Grey

Concrete Color: Gray

Texture: Retarded

Exposure: Medium

Description: Fine Aggregate: crushed gray granite;
Coarse Aggregate: 75% - 5/8 to 9/32 in. gray granite,
25% - 5/8 to 9/32 in. black granite



540

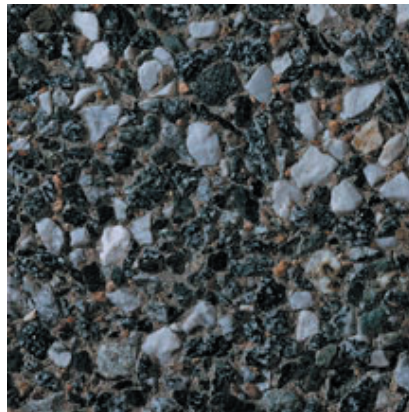
Color: Black - Grey

Concrete Color: Gray

Texture: Sandblasted

Exposure: Medium

Description: Fine Aggregate: crushed gray granite;
Coarse Aggregate: 75% - 5/8 to 9/32 in. gray granite,
25% - 5/8 to 9/32 in. black granite



541

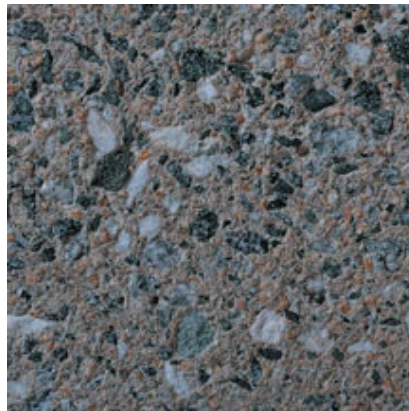
Color: Black - White

Concrete Color: 50% - White; 50% - Gray

Texture: Retarded

Exposure: Medium

Description: Fine Aggregate: reddish brown concrete
sand; Coarse Aggregate: 75% - 1/2 to 1/4 in. gray
granite, 25% - 1/2 to 3/8 in. White marble



542

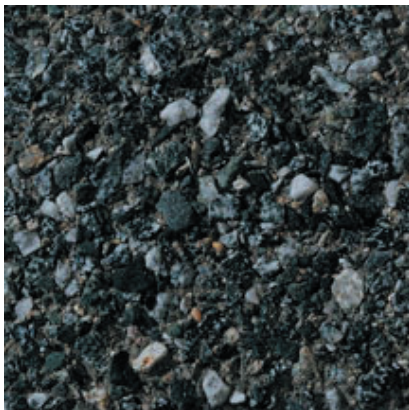
Color: Grey

Concrete Color: 50% - White; 50% - Gray

Texture: Sandblasted

Exposure: Medium

Description: Fine Aggregate: reddish brown concrete
sand; Coarse Aggregate: 75% - 1/2 to 1/4 in. gray
granite, 25% - 1/2 to 3/8 in. White marble



543

Color: Grey

Concrete Color: Gray

Texture: Retarded

Exposure: Medium

Description: Fine Aggregate: crushed gray granite;
Coarse Aggregate: 1/2 to 1/4 in. gray granite



544

Color: Grey

Concrete Color: Gray

Texture: Sandblasted

Exposure: Medium

Description: Fine Aggregate: crushed gray granite;
Coarse Aggregate: 1/2 to 1/4 in. gray granite



545A

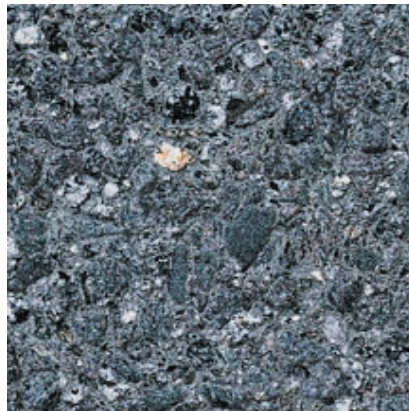
Color: Black

Concrete Color: Gray

Texture: Retarded

Exposure: Medium

Description: Fine Aggregate: crushed black granite;
Coarse Aggregate: 1/2 to 1/4 in. black granite; Pigment:
black



545B

Color: Grey

Concrete Color: Gray

Texture: Sandblasted

Exposure: Medium

Description: Fine Aggregate: crushed black granite;
Coarse Aggregate: 1/2 to 1/4 in. black granite; Pigment:
black



545C

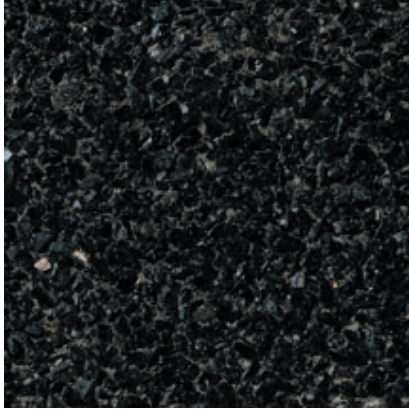
Color: Grey

Concrete Color: Gray

Texture: Acid Etched

Exposure: Medium

Description: Fine Aggregate: crushed black granite;
Coarse Aggregate: 1/2 to 1/4 in. black granite; Pigment:
black



546

Color: Black

Concrete Color: Gray

Texture: Retarded

Exposure: Light

Description: Fine Aggregate: crushed black granite;
Coarse Aggregate: 9/32 to 1/8 in. black granite



547

Color: Grey

Concrete Color: Gray

Texture: Sandblasted

Exposure: Light

Description: Fine Aggregate: crushed black granite;
Coarse Aggregate: 9/32 to 1/8 in. black granite



548

Color: Black

Concrete Color: Gray

Texture: Retarded

Exposure: Medium

Description: Fine Aggregate: crushed black granite;
Coarse Aggregate: 1/2 to 1/4 in. black granite; Pigment:
black



549

Color: Black

Concrete Color: Gray

Texture: Acid Etched

Exposure: Medium

Description: Fine Aggregate: crushed black granite;
Coarse Aggregate: 1/2 to 1/4 in. black granite; Pigment:
black



550

Color: Black - Grey

Concrete Color: Gray

Finish: Sand Embedment

Description: Fine Aggregate: reddish brown concrete sand; Coarse Aggregate: 4 to 2 in. black/gray varigated granite



551

Color: Multicolored

Concrete Color: Gray

Finish: Sand Embedment

Description: Fine Aggregate: reddish brown concrete sand; Coarse Aggregate: 1- to 1 in. multicolored river gravel; Pigment: yellow



552

Color: Multicolored

Concrete Color: Gray

Finish: Sand Embedment

Description: Fine Aggregate: reddish brown concrete sand; Coarse Aggregate: 1- to in. reddish brown river gravel; Pigment: yellow



553

Color: Pink

Concrete Color: White

Finish: Sand Embedment

Description: Fine Aggregate: crushed rose quartz; Coarse Aggregate: 4 to 2 in. rose quartz; Pigment: red



554

Color: Green

Concrete Color: Gray

Finish: Sand Embedment

Description: Fine Aggregate: reddish brown concrete sand; Coarse Aggregate: 4 to 2 in. green quartzite



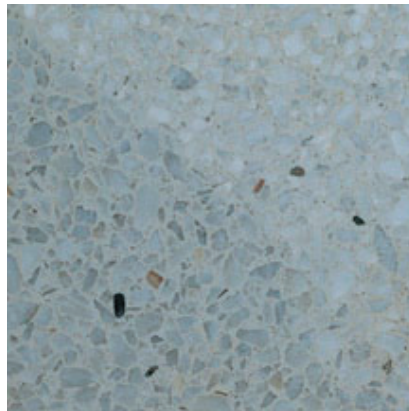
555

Color: Brown

Concrete Color: White

Finish: Sand Embedment

Description: Fine Aggregate: reddish brown concrete sand; Coarse Aggregate: 4 to 2 in. sandstone; Pigment: red



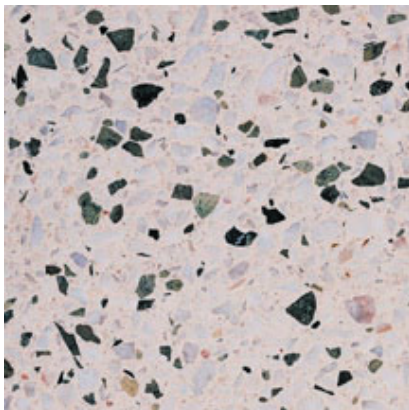
556

Color: White

Concrete Color: White

Finish: Polished

Description: Fine Aggregate: crushed White marble; Coarse Aggregate: 65% - 5/8 to 9/32 in. White marble, 35% - 3/8 in. White marble



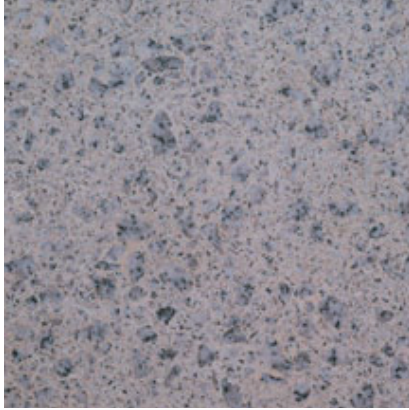
557

Color: Multicolored

Concrete Color: White

Finish: Polished

Description: Fine Aggregate: crushed White quartz; Coarse Aggregate: 75% - 1/2 to 1/8 in. White quartz, 25% - 1/2 to 1/8 in. green marble



558

Color: Grey

Concrete Color: White

Finish: Polished

Description: Fine Aggregate: crushed White granite;
Coarse Aggregate: 5/8 to 3/32 in. White granite



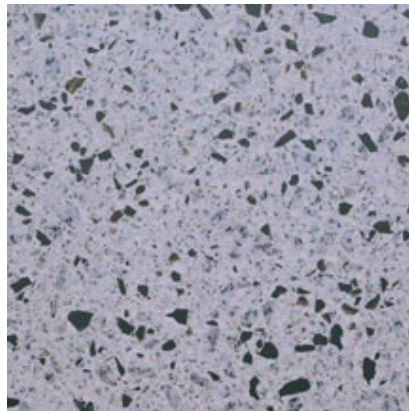
559

Color: Pink

Concrete Color: White

Finish: Polished

Description: Fine Aggregate: crushed flamingo quartz;
Coarse Aggregate: 5/8 to 1/8 in. flamingo quartz



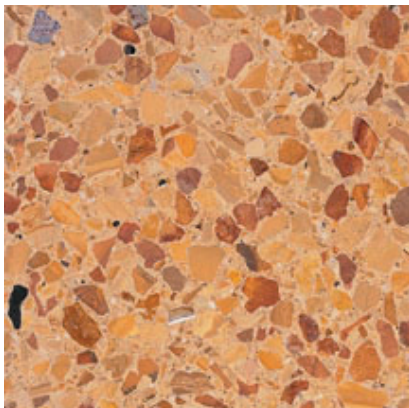
560

Color: Black - White

Concrete Color: White

Finish: Polished

Description: Fine Aggregate: crushed White granite;
Coarse Aggregate: 80% - 5/8 to 3/32 in. White granite,
20% - 5/8 to 1/8 in. black granite



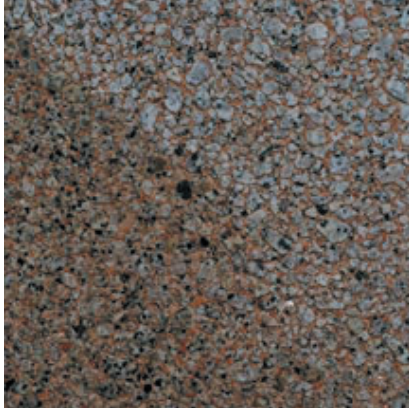
561

Color: Buff/Tan

Concrete Color: White

Finish: Polished

Description: Fine Aggregate: buff masonry sand;
Coarse Aggregate: 50% - 3/4 to 3/8 in. buff limestone,
50% - 3/4 to 3/8 in. brownish red limestone; Pigment:
buff



562

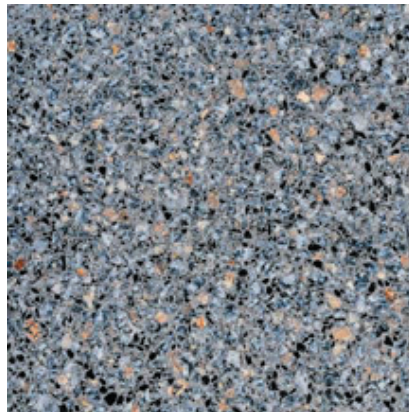
Color: Grey

Concrete Color: White

Finish: Polished

Texture: Acid Etched

Description: Fine Aggregate: crushed pink feldspar;
Coarse Aggregate: 7/16 to 1/4 in. pink granite; Pigment:
50% - buff; 50% - brown



563

Color: Grey

Concrete Color: White

Finish: Polished

Description: Fine Aggregate: crushed black granite;
Coarse Aggregate: 3/8 to 1/8 in. black granite; Pigment:
gray



564

Color: Red

Concrete Color: Gray

Finish: Polished

Texture: Acid Etched

Description: Fine Aggregate: crushed red granite;
Coarse Aggregate: 5/8 to 9/32 in. red granite; Pigment:
red



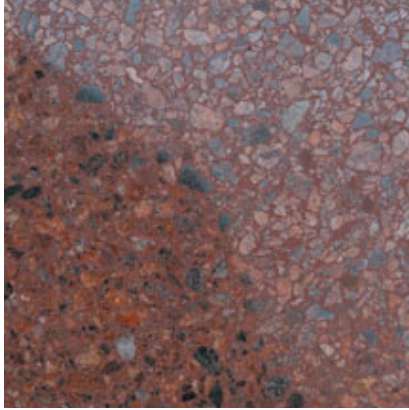
565

Color: Red

Concrete Color: Gray

Finish: Polished

Description: Fine Aggregate: crushed red granite;
Coarse Aggregate: 5/8 to 1/8 in. red granite; Pigment:
tannish red



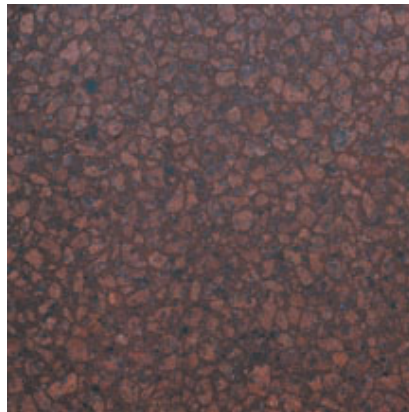
566

Color: Red

Concrete Color: Gray

Finish: Polished

Description: Finish Aggregate: crushed red granite;
Coarse Aggregate: 5/8 to 1/8 in. red granite; Pigment:
tannish pink



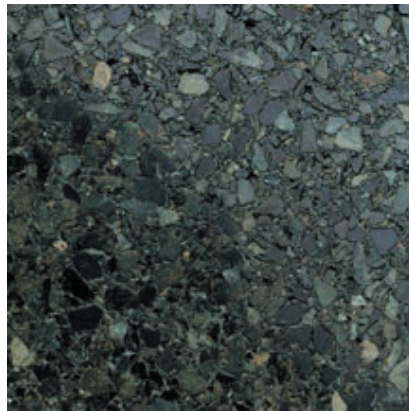
567

Color: Red

Concrete Color: Gray

Finish: Polished

Description: Fine Aggregate: crushed black granite;
Coarse Aggregate: 1/2 to 3/8 in. red granite; Pigment:
50% - brown; 50% - orange/red



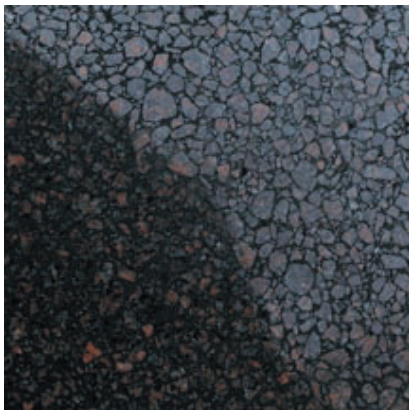
568

Color: Green

Concrete Color: White

Finish: Polished

Description: Fine Aggregate: crushed green marble;
Coarse Aggregate: 1/2 to 1/8 in. green marble; Pigment:
90% - green; 10% - black



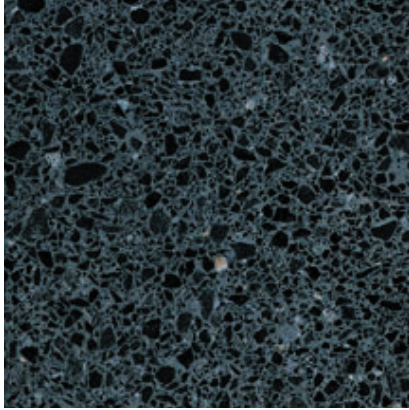
569

Color: Red

Concrete Color: Gray

Finish: Polished

Description: Fine Aggregate: crushed mahogany
granite; Coarse Aggregate: 5/8 to 1/8 in. mahogany
granite; Pigment: dark gray



570

Color: Black

Concrete Color: gray

Finish: Polished

Description: Fine Aggregate: crushed black granite;
Coarse Aggregate: 3/8 to 1/8 in. black granite; Pigment:
black



571

Color: Brown

Concrete Color: White

Finish: Striated

Description: Fine Aggregate: reddish brown concrete
sand; Coarse Aggregate: 3/8 to 1/8 in. reddish brown
river gravel; Pigment: brown



572

Color: Grey

Concrete Color: White

Finish: 1/2 in. Fin

Description: Fine Aggregate: crushed gray granite;
Coarse Aggregate: 1/2 to 1/4 in. gray granite



573

Color: Grey

Concrete Color: White

Finish: Tapered Fin

Description: Fine Aggregate: 70% - crushed White
marble, 30% - crushed black granite; Coarse Aggregate:
5/8 to 9/32 in. White marble; Pigment: black



574

Color: Red

Concrete Color: White

Finish: Fractured Fin

Description: Fine Aggregate: reddish brown concrete sand; Coarse Aggregate: 3/8 to 1/8 in. reddish brown river gravel; Pigment: red



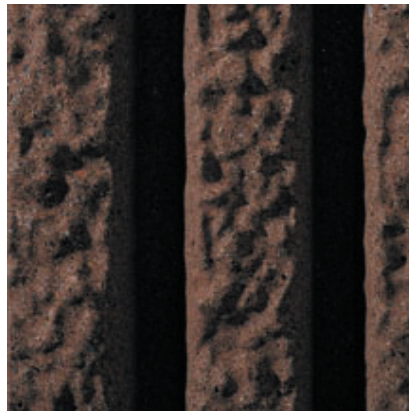
575

Color: Brown

Concrete Color: White

Finish: Fine Stone Rib

Description: Fine Aggregate: reddish brown concrete sand, Coarse Aggregate: 3/8 to 1/8 in. reddish brown river gravel; Pigment: yellow



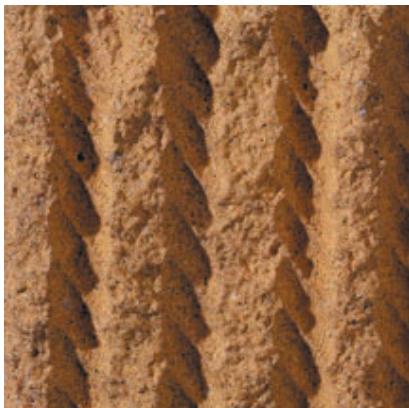
576

Color: Brown

Concrete Color: Gray

Finish: Broken Rock Rib

Description: Fine Aggregate: 50% - reddish brown masonry sand, 50% - crushed red granite; Coarse Aggregate: 1/2 to 3/8 in. red granite; Pigment: red



577

Color: Yellow

Concrete Color: White

Finish: Standard Fractured Rope

Description: Fine Aggregate: reddish brown concrete sand; Coarse Aggregate: 3/8 to 1/8 in. reddish brown river gravel; Pigment: yellow



578

Color: White

Concrete Color: White

Finish: Simulated Bushhammer

Description: Fine Aggregate: crushed White marble;
Coarse Aggregate: 5/8 to 9/32 in. White marble



579

Color: Yellow

Concrete Color: White

Finish: Bushhammered Rib

Description: Fine Aggregate: crushed yellow marble;
Coarse Aggregate: 5/8 to 9/32 in. yellow marble



580

Color: Yellow

Concrete Color: White

Finish: Hammered Rib

Description: Fine Aggregate: crushed yellow marble;
Coarse Aggregate: 5/8 to 9/32 in. yellow marble



581

Color: Grey

Concrete Color: Gray

Finish: Extra Rough Sawn

Description: Fine Aggregate: reddish brown concrete sand;
Coarse Aggregate: 3/8 to 1/8 in. reddish brown river gravel; Pigment: red



582

Color: Grey

Concrete Color: White

Finish: Random Grooved Barn Board

Description: Fine Aggregate: crushed gray granite;
Coarse Aggregate: 1/2 to 1/4 in. gray granite; Pigment:
black



583

Color: Brown

Concrete Color: Gray

Finish: Cedar Stake

Description: Fine Aggregate: reddish brown concrete
sand; Coarse Aggregate: 3/8 to 1/8 in. reddish brown
river gravel; Pigment: brown



584

Color: Brown

Concrete Color: White

Finish: Stucco

Description: Fine Aggregate: reddish brown concrete
sand; Coarse Aggregate: 3/8 to 1/8 in. reddish brown
river gravel; Pigment: brown



585

Color: Grey

Concrete Color: Gray

Finish: Stone Ground Fractured Granite

Description: Fine Aggregate: reddish brown concrete
sand; Coarse Aggregate: 3/8 to 1/8 in. reddish brown
river gravel; Pigment: red



586

Color: Grey

Concrete Color: Gray

Finish: Simulated Bushhammer

Description: Fine Aggregate: reddish brown concrete sand; Coarse Aggregate: 3/8 to 1/8 in. reddish brown river gravel



587

Color: Red

Concrete Color: Gray

Finish: Split Face Block

Description: Fine Aggregate: crushed gray granite; Coarse Aggregate: 5/8 to 9/32 in. red granite; Pigment: yellow



588

Color: Red

Concrete Color: White

Finish: Simulated Brick

Texture: Acid Etched

Exposure: Light

Description: Fine Aggregate: reddish brown concrete sand ; Coarse Aggregate: 3/8 in. reddish brown river gravel; Pigment: buff



589

Color: Red

Concrete Color: Gray

Finish: Old Brick

Description: Fine Aggregate: reddish brown concrete sand; Coarse Aggregate: 3/8 to 1/8 in. reddish brown river gravel; Pigment: red



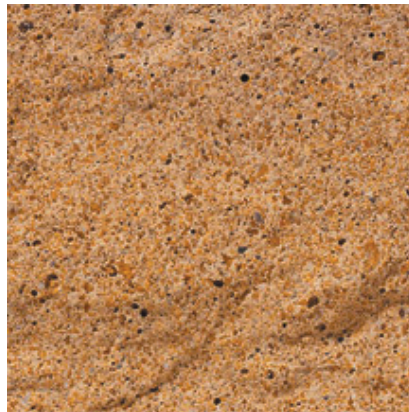
590

Color: Black

Concrete Color: White

Finish: Split Face Rock

Description: Fine Aggregate: reddish brown concrete sand; Coarse Aggregate: 3/8 to 1/8 in. reddish brown river gravel ; Pigment: black



591

Color: Yellow

Concrete Color: White

Finish: Split Face Rock

Texture: Acid Etched

Exposure: Deep

Description: Fine Aggregate: crushed brown marble; Coarse Aggregate: 50% - 1/4 to 1/8 in. brown marble



592

Color: Yellow

Concrete Color: White

Finish: Split Face Rock

Texture: Acid Etched

Exposure: Light

Description: Fine Aggregate: crushed brown marble; Coarse Aggregate: 50% - 1/4 to 1/8 in. brown marble, 50% - 3/8 to 5/16 in. brown marble



593

Color: Grey

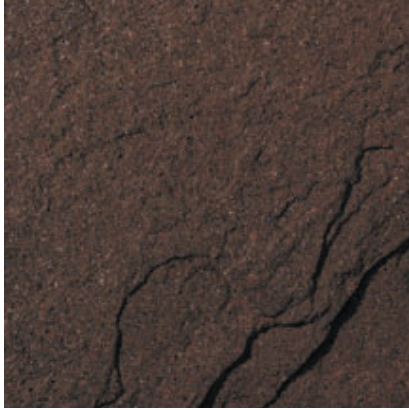
Concrete Color: Gray

Finish: Split Face Rock

Texture: Acid Etched

Exposure: Light

Description: Fine Aggregate: 50% - crushed gray granite, 50% - crushed purple quartzite; Coarse Aggregate: 3/8 to 1/8 in. purple quartzite; Pigment: maroon



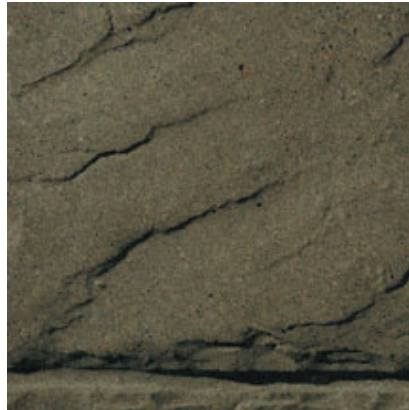
594

Color: Red

Concrete Color: Gray

Finish: Flagstone

Description: Fine Aggregate: reddish brown concrete sand; Coarse Aggregate: 3/8 to 1/8 in. reddish brown river gravel ; Pigment: red



595

Color: Brown

Concrete Color: White

Finish: Ashlar Stone

Description: Fine Aggregate: reddish brown concrete sand; Coarse Aggregate: 3/8 to 1/8 in. reddish brown river gravel; Pigment: brown